

02



TSLM Series LINEAR MOTOR FULLY SEALED MODULE

| Intro

TOKK linear motor modules, known for their high precision, fast speed, smooth operation, simple structure, high integration, standardized series, and cost efficiency, have been widely applied across various industries. They have also gained high recognition and favor in the industry. From simple handling and conveying to precise measurement and machining, TOKK's linear motor technology is applicable in a wide range of processing techniques and working conditions. Additionally, its customizable flexible configurations, high stability, and excellent cost performance meet diverse customer application needs.

| Advantages

- ① Molded parts and standardization for lower costs
- ② Compact structure
- ③ Supports multi-axis configurations (Z-axis, cross, cantilever, gantry, etc.), offering versatility and flexibility
- ④ Supports multiple mover-slider applications
- ⑤ Unlimited stroke extension available
- ⑥ High precision with optional feedback units, achieving sub-micron accuracy
- ⑦ Easy to customize with flexible design options
- ⑧ Wide range of applications

| Disadvantages

- ① Higher costs for traditional drive systems
- ② Relative complexity in motion control

| Application Industry

3C industry (Computers, Communication, Consumer electronics)
 Semiconductor industry New energy industry
 Automotive industry Photovoltaic industry
 LCD panel industry Laser processing industry

TSLM series linear motor fully sealed module naming rules

TSLM 140-1-L200-M0.5 S0 -CA55-1 H -5 -D00

Motor Type	
code	description
TLM	linear motor module
TSLM	fully-sealed linear motor module

Module Width	
code	description
140	140mm
170	170mm
210	210mm
235	235mm
...	...

Number of Slides	
code	description
1	single slider (standard)
2	double slider (custom)
...	...

Stroke	
code	description
L200	200mm
L300	300mm
...	...

Feedback Method	
code	description
M	magnetic scale
G	optical scale

Customization	
code	description
null	standard
D00	standard
D01	module

Cable length	
code	description
1	1m
2	2m
null	5m (standard)
...	...

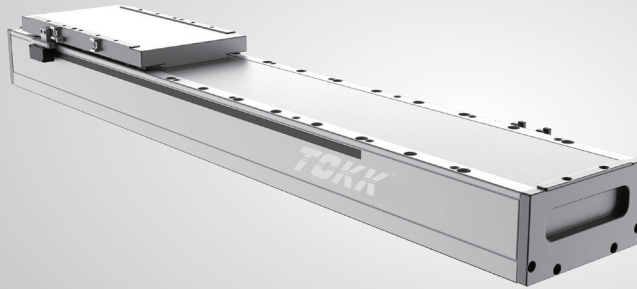
Sensor Option	
code	description
null	no sensor
H	with Hall sensor

Motor Type	
code	description
CA55-1	TICA55-105
CA55-2	TICA55-193
CA55-3	TICA55-280
UA38-1	TUA 38-61
UA38-2	TUA 38-121
...	...

Limit Switch	
code	description
null	photoelectric switch
S0	built-in encoder

Resolution	
code	description
1	1μm
0.5	0.5μm
...	...

Linear module TSLM140 series



Continuous thrust **48N~144N**

Peak thrust **138N~414N**

Temperature rise **< 0.05°C/W**

Thrust fluctuation **< 2%**

TLM series

TSLM series

TIC series

TU series

Product parameter

Motor Model	TICA35-1	TICA35-2	TICA35-3
Cont. Thrust (N)	48	96	144
Peak Thrust (N)	138	276	414
Cont. Current (A)	3.39	3.39	3.39
Max. Current (A)	10.34	10.34	10.34
Max. Speed* ¹ (m/s)	4		
Max. Accel.* ¹ (m/s ²)	50		
Repeatability (μm)	Magnetic Scale: ±3; Optical Scale: ±2		
Max. Load* ¹ (kg)	30		
Height (mm)	89.5		
Stroke* ² (mm)	35~1985(50 pitch)	47~1997(50 pitch)	10~1960(50 pitch)

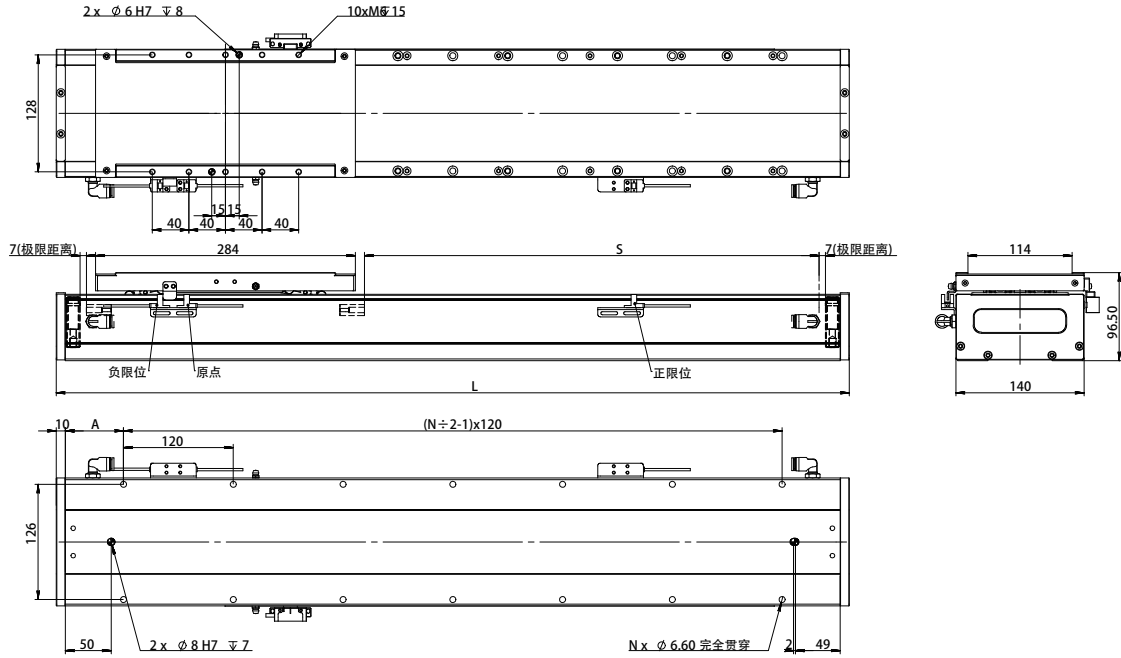
*¹ Maximum acceleration, maximum speed, and maximum load are reference values. Actual values should be comprehensively evaluated based on the motion plan. If the actual parameters exceed the reference values, please contact the manufacturer for assessment.

*² For longer strokes, please contact the manufacturer.

TSLM140-TICA35-1

TSLM140-TICA35-1

Unit:mm



Eff. Stroke: S	35	85	135	185	235	285	335	385	435	485	535	585	635	685	735	785	835	885	935	985
Mech. Stroke: S + All.	49	99	149	199	249	299	349	399	449	499	549	599	649	699	749	799	849	899	949	999
Total Length: L	405	455	505	555	605	655	705	755	805	855	905	955	1005	1055	1105	1155	1205	1255	1305	1355
No. of Holes: N	8	8	8	10	10	12	12	12	14	14	16	16	18	18	18	20	20	22	22	22
Hole to End: A	12.5	37.5	62.5	27.5	52.5	17.5	42.5	67.5	32.5	57.5	22.5	47.5	12.5	37.5	62.5	27.5	52.5	17.5	42.5	67.5
Mod. Wt. (kg)	9.8	10.6	11.4	12.2	13	13.8	14.6	15.4	16.2	17	17.8	18.6	19.4	20.2	21	21.8	22.6	23.4	24.2	25
Comp. Wt. (kg)	2.8																			

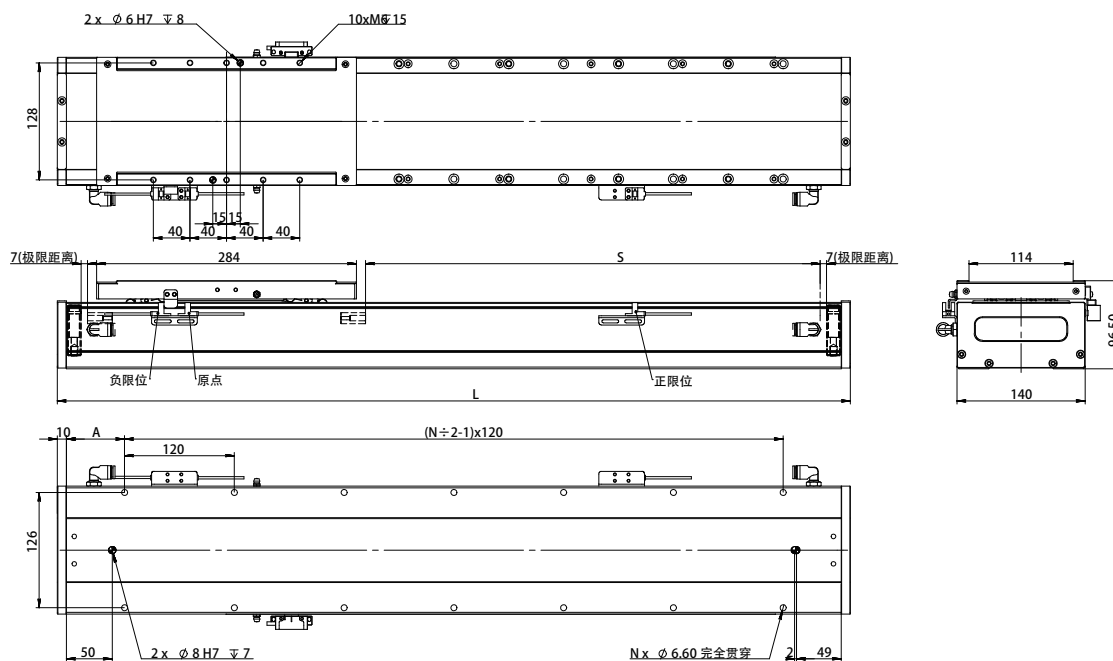
Eff. Stroke: S	1035	1085	1135	1185	1235	1285	1335	1385	1435	1485	1535	1585	1635	1685	1735	1785	1835	1885	1935	1985
Mech. Stroke: S + All.	1049	1099	1149	1199	1249	1299	1349	1399	1449	1499	1549	1599	1649	1699	1749	1799	1849	1899	1949	1999
Total Length: L	1405	1455	1505	1555	1605	1655	1705	1755	1805	1855	1905	1955	2005	2055	2105	2155	2205	2255	2305	2355
No. of Holes: N	24	24	26	26	28	28	28	30	30	32	32	32	34	34	36	36	38	38	38	40
Hole to End: A	32.5	57.5	22.5	47.5	12.5	37.5	62.5	27.5	52.5	17.5	42.5	67.5	32.5	57.5	22.5	47.5	12.5	37.5	62.5	27.5
Mod. Wt. (kg)	25.8	26.6	27.4	28.2	29	29.8	30.6	31.4	32.2	33	33.8	34.6	35.4	36.2	37	37.8	38.6	39.4	40.2	41
Comp. Wt. (kg)	2.8																			

This diagram is for reference only. Actual dimensions are based on the provided 2D/3D drawings. Product style, appearance, and specifications are subject to change without prior notice.

TSLM140-TICA35-2

TSLM140-TICA35-2

Unit:mm



Eff. Stroke: S	47	97	147	197	247	297	347	397	447	497	547	597	647	697	747	797	847	897	947	997
Mech. Stroke: S + All.	61	111	161	211	261	311	361	411	461	511	561	611	661	711	761	811	861	911	961	1011
Total Length: L	417	467	517	567	617	667	717	767	817	867	917	967	1017	1067	1117	1167	1217	1267	1317	1367
No. of Holes: N	8	8	8	10	10	12	12	14	14	14	16	16	18	18	18	20	20	22	22	24
Hole to End: A	18.5	43.5	68.5	33.5	58.5	33.5	48.5	13.5	38.5	63.5	28.5	53.5	18.5	43.5	68.5	33.5	58.5	33.5	48.5	13.5
Mod. Wt. (kg)	10.8	11.6	12.4	13.2	14	14.8	15.6	16.4	17.2	18	18.8	19.6	20.4	21.2	22	22.8	23.6	24.4	25.2	26
Comp. Wt. (kg)	3.0																			

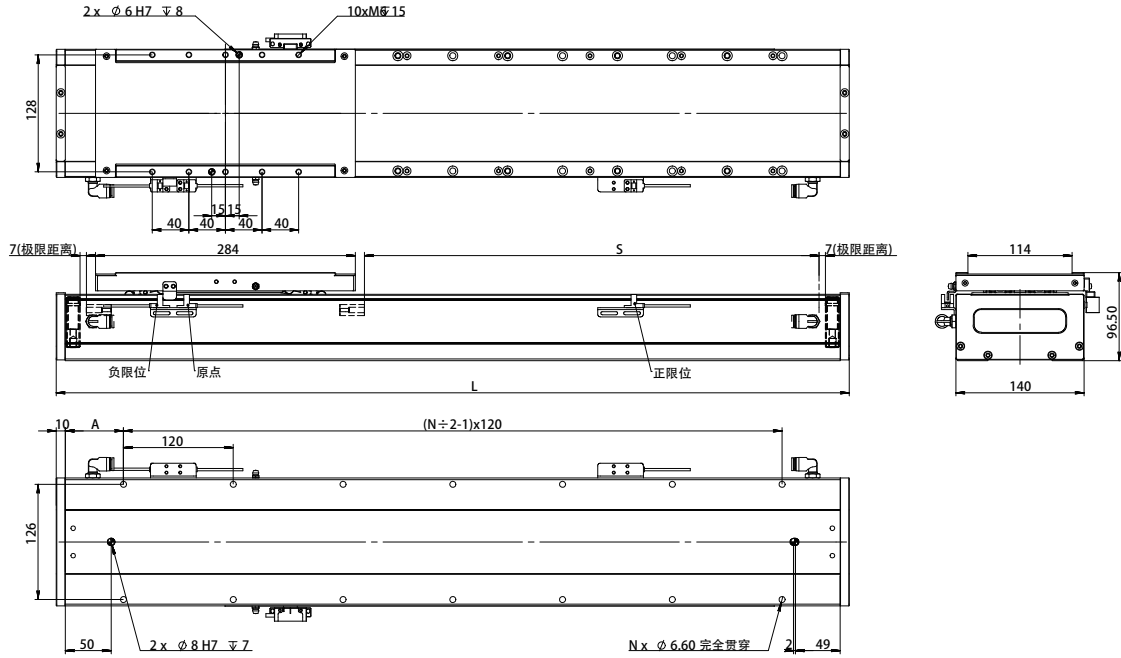
Eff. Stroke: S	1047	1097	1147	1197	1247	1297	1347	1397	1447	1497	1547	1597	1647	1697	1747	1797	1847	1897	1947	1997
Mech. Stroke: S + All.	1061	1111	1161	1211	1261	1311	1361	1411	1461	1511	1561	1611	1661	1711	1761	1811	1861	1911	1961	2011
Total Length: L	1417	1467	1517	1567	1617	1667	1717	1767	1817	1867	1917	1967	2017	2067	2117	2167	2217	2267	2317	2367
No. of Holes: N	24	24	26	26	28	28	28	30	30	32	32	34	34	34	36	36	38	38	38	40
Hole to End: A	38.5	63.5	28.5	53.5	18.5	43.5	68.5	33.5	58.5	33.5	48.5	13.5	38.5	63.5	28.5	53.5	18.5	43.5	68.5	33.5
Mod. Wt. (kg)	26.8	27.6	28.4	29.2	30	30.8	31.6	32.4	33.2	34	34.8	35.6	36.4	37.2	38	38.8	39.6	40.4	41.2	42
Comp. Wt. (kg)	3.0																			

This diagram is for reference only. Actual dimensions are based on the provided 2D/3D drawings. Product style, appearance, and specifications are subject to change without prior notice.

TSLM140-TICA35-3

TSLM140-TICA35-3

Unit:mm

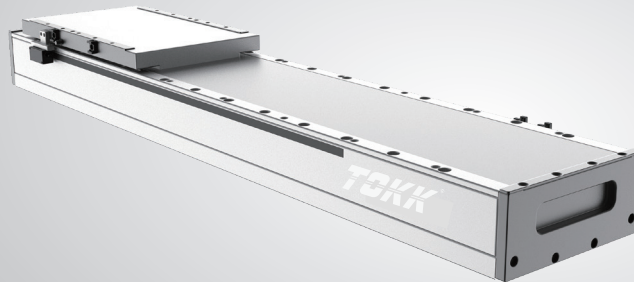


Eff. Stroke: S	10	60	110	160	210	260	310	360	410	460	510	560	610	660	710	760	810	860	910	960
Mech. Stroke: S + All.	24	74	124	174	224	274	324	374	424	474	524	574	624	674	724	774	824	874	924	974
Total Length: L	380	430	480	530	580	630	680	730	780	830	880	930	980	1030	1080	1130	1180	1230	1280	1330
No. of Holes: N	6	8	8	10	10	10	12	12	14	14	16	16	16	18	18	20	20	20	22	22
Hole to End: A	60	25	50	15	40	65	30	55	20	45	10	35	60	25	50	15	40	65	30	55
Mod. Wt. (kg)	9.8	10.6	11.4	12.2	13	13.8	14.6	15.4	16.2	17	17.8	18.6	19.4	20.2	21	21.8	22.6	23.4	24.2	25
Comp. Wt. (kg)	3.5																			

Eff. Stroke: S	1010	1060	1110	1160	1210	1260	1310	1360	1410	1460	1510	1560	1610	1660	1710	1760	1810	1860	1910	1960
Mech. Stroke: S + All.	1024	1074	1124	1174	1224	1274	1324	1374	1424	1474	1524	1574	1624	1674	1724	1774	1824	1874	1924	1974
Total Length: L	1380	1430	1480	1530	1580	1630	1680	1730	1780	1830	1880	1930	1980	2030	2080	2130	2180	2230	2280	2330
No. of Holes: N	24	24	26	26	26	28	28	30	30	30	32	32	34	34	36	36	36	38	38	40
Hole to End: A	20	45	10	35	60	25	50	15	40	65	30	55	20	45	10	35	60	25	50	15
Mod. Wt. (kg)	25.8	26.6	27.4	28.2	29	29.8	30.6	31.4	32.2	33	33.8	34.6	35.4	36.2	37	37.8	38.6	39.4	40.2	41
Comp. Wt. (kg)	3.5																			

This diagram is for reference only. Actual dimensions are based on the provided 2D/3D drawings. Product style, appearance, and specifications are subject to change without prior notice.

Linear module TSLM170 series



Continuous thrust **91N~273N**

Peak thrust **252N~756N**

Temperature rise **< 0.05°C/W**

Thrust fluctuation **< 2%**

Product parameter

Motor Model	TICA55-1	TICA55-2	TICA55-3
Cont. Thrust (N)	91	182	273
Peak Thrust (N)	252	504	756
Cont. Current (A)	3.38	3.38	3.38
Max. Current (A)	10.31	10.31	10.31
Max. Speed* ¹ (m/s)	5		
Max. Accel.* ¹ (m/s ²)	50		
Repeatability (μm)	Magnetic Scale: ±3; Optical Scale: ±2		
Max. Load* ¹ (kg)	100		
Height (mm)	96.5		
Stroke* ² (mm)	35~1985(50 pitch)	47~1997(50 pitch)	10~1960(50 pitch)

*¹ Maximum acceleration, maximum speed, and maximum load are reference values. Actual values should be comprehensively evaluated based on the motion plan. If the actual parameters exceed the reference values, please contact the manufacturer for assessment.

*² For longer strokes, please contact the manufacturer.

TLM series

TSLM series

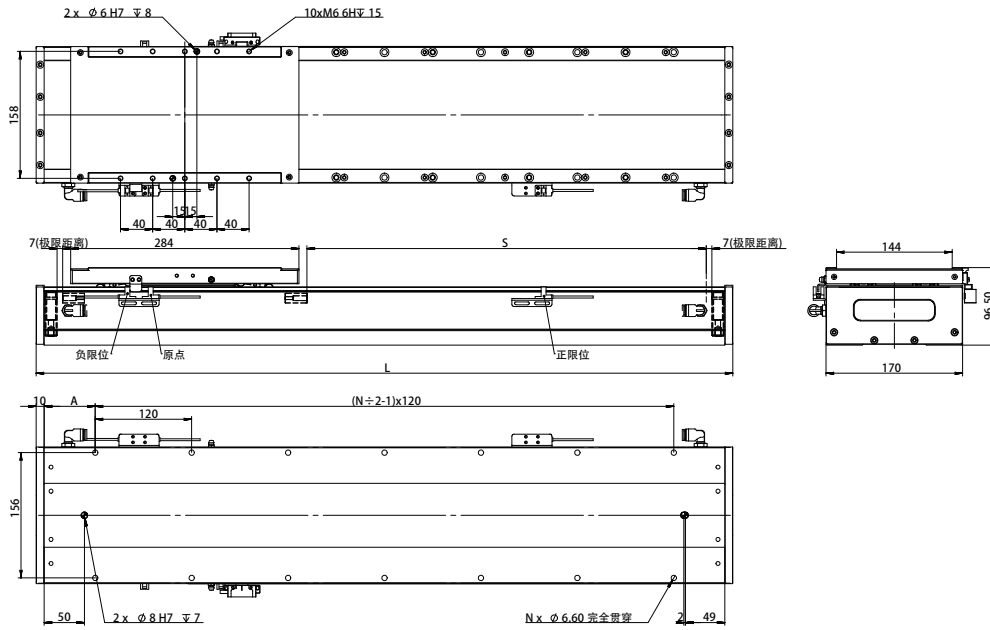
TIC series

TU series

TSLM170-TICA55-1

TSLM170-TICA55-1

Unit: mm



Eff. Stroke: S	35	85	135	185	235	285	335	385	435	485	535	585	635	685	735	785	835	885	935	985
Mech. Stroke: S + All.	49	99	149	199	249	299	349	399	449	499	549	599	649	699	749	799	849	899	949	999
Total Length: L	405	455	505	555	605	655	705	755	805	855	905	955	1005	1055	1105	1155	1205	1255	1305	1355
No. of Holes: N	8	8	8	10	10	12	12	12	14	14	16	16	18	18	18	20	20	22	22	22
Hole to End: A	12.5	37.5	62.5	27.5	52.5	17.5	42.5	67.5	32.5	57.5	22.5	47.5	12.5	37.5	62.5	27.5	52.5	17.5	42.5	67.5
Mod. Wt. (kg)	12.2	13.2	14.2	15.2	16.2	17.2	18.2	19.2	20.2	21.2	22.2	23.2	24.2	25.2	26.2	27.2	28.2	29.2	30.2	31.2
Comp. Wt. (kg)	4.1																			

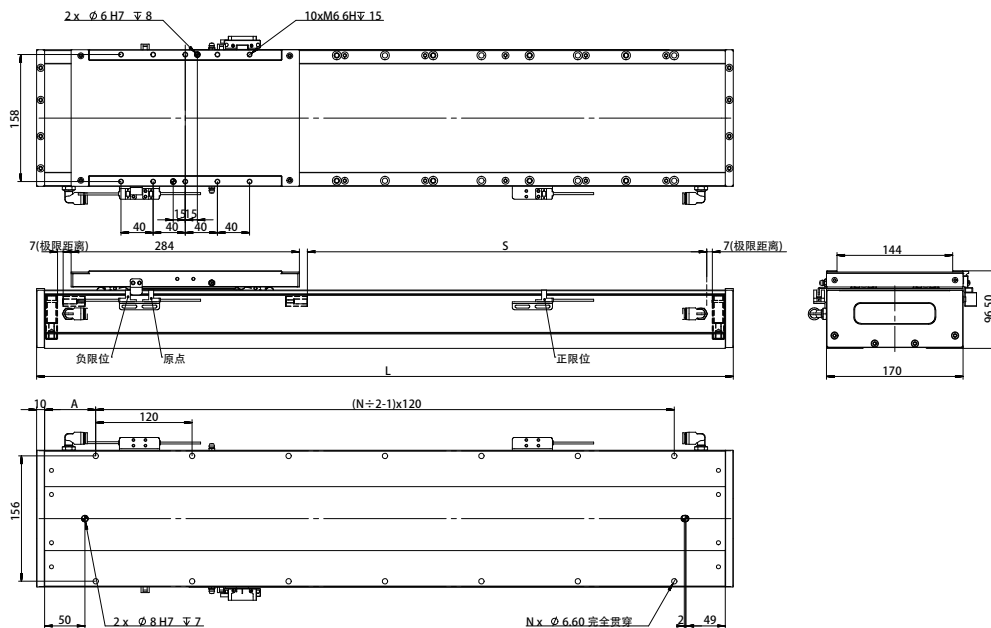
Eff. Stroke: S	1035	1085	1135	1185	1235	1285	1335	1385	1435	1485	1535	1585	1635	1685	1735	1785	1835	1885	1935	1985
Mech. Stroke: S + All.	1049	1099	1149	1199	1249	1299	1349	1399	1449	1499	1549	1599	1649	1699	1749	1799	1849	1899	1949	1999
Total Length: L	1405	1455	1505	1555	1605	1655	1705	1755	1805	1855	1905	1955	2005	2055	2105	2155	2205	2255	2305	2355
No. of Holes: N	24	24	26	26	28	28	28	30	30	32	32	32	34	34	36	36	38	38	38	40
Hole to End: A	32.5	57.5	22.5	47.5	12.5	37.5	62.5	27.5	52.5	17.5	42.5	67.5	32.5	57.5	22.5	47.5	12.5	37.5	62.5	27.5
Mod. Wt. (kg)	32.2	33.2	34.2	35.2	36.2	37.2	38.2	39.2	40.2	41.2	42.2	43.2	44.2	45.2	46.2	47.2	48.2	49.2	50.2	51.2
Comp. Wt. (kg)	4.1																			

This diagram is for reference only. Actual dimensions are based on the provided 2D/3D drawings. Product style, appearance, and specifications are subject to change without prior notice.

TSLM170-TICA55-2

TSLM170-TICA55-2

Unit:mm



Eff. Stroke: S	47	97	147	197	247	297	347	397	447	497	547	597	647	697	747	797	847	897	947	997
Mech. Stroke: S + All.	61	111	161	211	261	311	361	411	461	511	561	611	661	711	761	811	861	911	961	1011
Total Length: L	417	467	517	567	617	667	717	767	817	867	917	967	1017	1067	1117	1167	1217	1267	1317	1367
No. of Holes: N	8	8	8	10	10	12	12	14	14	14	16	16	18	18	18	20	20	22	22	24
Hole to End: A	18.5	43.5	68.5	33.5	58.5	33.5	48.5	13.5	38.5	63.5	28.5	53.5	18.5	43.5	68.5	33.5	58.5	33.5	48.5	13.5
Mod. Wt. (kg)	13.2	14.2	15.2	16.2	17.2	18.2	19.2	20.2	21.2	22.2	23.2	24.2	25.2	26.2	27.2	28.2	29.2	30.2	31.2	32.2
Comp. Wt. (kg)	4.5																			

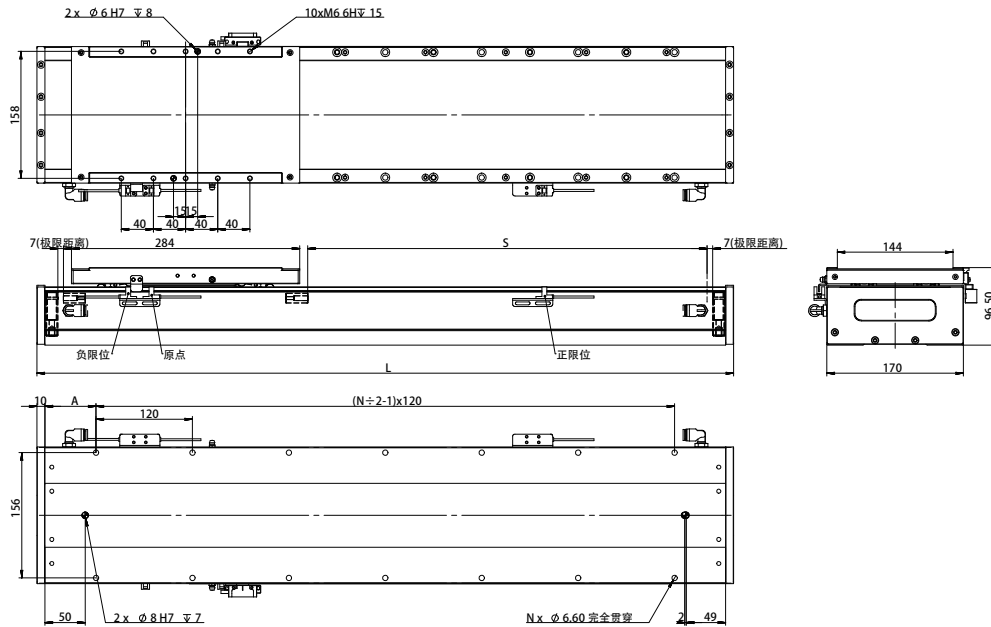
Eff. Stroke: S	1047	1097	1147	1197	1247	1297	1347	1397	1447	1497	1547	1597	1647	1697	1747	1797	1847	1897	1947	1997
Mech. Stroke: S + All.	1061	1111	1161	1211	1261	1311	1361	1411	1461	1511	1561	1611	1661	1711	1761	1811	1861	1911	1961	2011
Total Length: L	1417	1467	1517	1567	1617	1667	1717	1767	1817	1867	1917	1967	2017	2067	2117	2167	2217	2267	2317	2367
No. of Holes: N	24	24	26	26	28	28	28	30	30	32	32	34	34	34	36	36	38	38	38	40
Hole to End: A	38.5	63.5	28.5	53.5	18.5	43.5	68.5	33.5	58.5	33.5	48.5	13.5	38.5	63.5	28.5	53.5	18.5	43.5	68.5	33.5
Mod. Wt. (kg)	33.2	34.2	35.2	36.2	37.2	38.2	39.2	40.2	41.2	42.2	43.2	44.2	45.2	46.2	47.2	48.2	49.2	50.2	51.2	52.2
Comp. Wt. (kg)	4.5																			

This diagram is for reference only. Actual dimensions are based on the provided 2D/3D drawings. Product style, appearance, and specifications are subject to change without prior notice.

TSLM170-TICA55-3

TSLM170-TICA55-3

Unit:mm

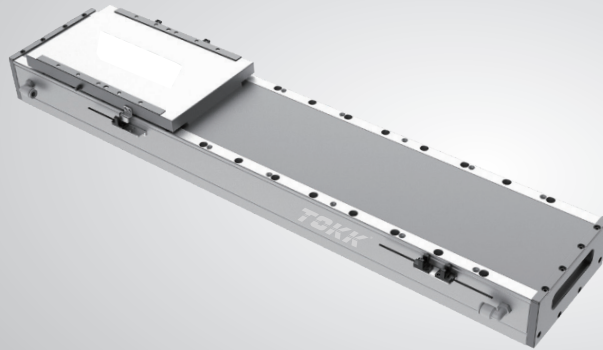


Eff. Stroke: S	10	60	110	160	210	210	310	360	410	460	510	560	610	660	710	760	810	860	910	960
Mech. Stroke: S + All.	24	74	124	174	224	224	324	374	424	474	524	574	624	674	724	774	824	874	924	974
Total Length: L	380	430	480	530	580	580	680	730	780	830	880	930	980	1030	1080	1130	1180	1230	1280	1330
No. of Holes: N	6	8	8	10	10	10	12	12	14	14	16	16	16	18	18	20	20	20	22	22
Hole to End: A	60	25	50	15	40	40	30	55	20	45	10	35	60	25	50	15	40	65	30	55
Mod. Wt. (kg)	13.1	14.1	15.1	16.1	17.1	17.1	19.1	20.1	21.1	22.1	23.1	24.1	25.1	26.1	27.1	28.1	29.1	30.1	31.1	32.1
Comp. Wt. (kg)	4.9																			

Eff. Stroke: S	1010	1060	1110	1160	1210	1260	1310	1360	1410	1460	1510	1560	1610	1660	1710	1760	1810	1860	1910	1960
Mech. Stroke: S + All.	1024	1074	1124	1174	1224	1274	1324	1374	1424	1474	1524	1574	1624	1674	1724	1774	1824	1874	1924	1974
Total Length: L	1380	1430	1480	1530	1580	1630	1680	1730	1780	1830	1880	1930	1980	2030	2080	2130	2180	2230	2280	2330
No. of Holes: N	24	24	26	26	26	28	28	30	30	30	32	32	34	34	36	36	36	38	38	40
Hole to End: A	20	45	10	35	60	25	50	15	40	65	30	55	20	45	10	35	60	25	50	15
Mod. Wt. (kg)	33.1	34.1	35.1	36.1	37.1	38.1	39.1	40.1	41.1	42.1	43.1	44.1	45.1	46.1	47.1	48.1	49.1	50.1	51.1	52.1
Comp. Wt. (kg)	4.9																			

This diagram is for reference only. Actual dimensions are based on the provided 2D/3D drawings. Product style, appearance, and specifications are subject to change without prior notice.

Linear module TSLM170 series



Continuous thrust **26N~130N**

Peak thrust **144N~720N**

Temperature rise **< 0.07°C/W**

Thrust fluctuation **< 2%**

Product parameter

Motor Model	TUA38-1	TUA38-2	TUA38-3	TUA38-4	TUA38-5
Cont. Thrust (N)	26	52	78	104	130
Peak Thrust (N)	144	288	432	576	720
Cont. Current (A)	2.54	2.54	2.54	2.54	2.54
Max. Current (A)	14.3	14.3	14.3	14.3	14.3
Max. Speed* ¹ (m/s)	4				
Max. Accel.* ¹ (m/s ²)	40				
Repeatability (μm)	Magnetic Scale: ±3; Optical Scale: ±2				
Max. Load* ¹ (kg)	50				
Height (mm)	96.5				
Stroke* ² (mm)	49~1789(60 pitch)				

*¹ Maximum acceleration, maximum speed, and maximum load are reference values. Actual values should be comprehensively evaluated based on the motion plan. If the actual parameters exceed the reference values, please contact the manufacturer for assessment.

*² For longer strokes, please contact the manufacturer.

TLM series

TSLM series

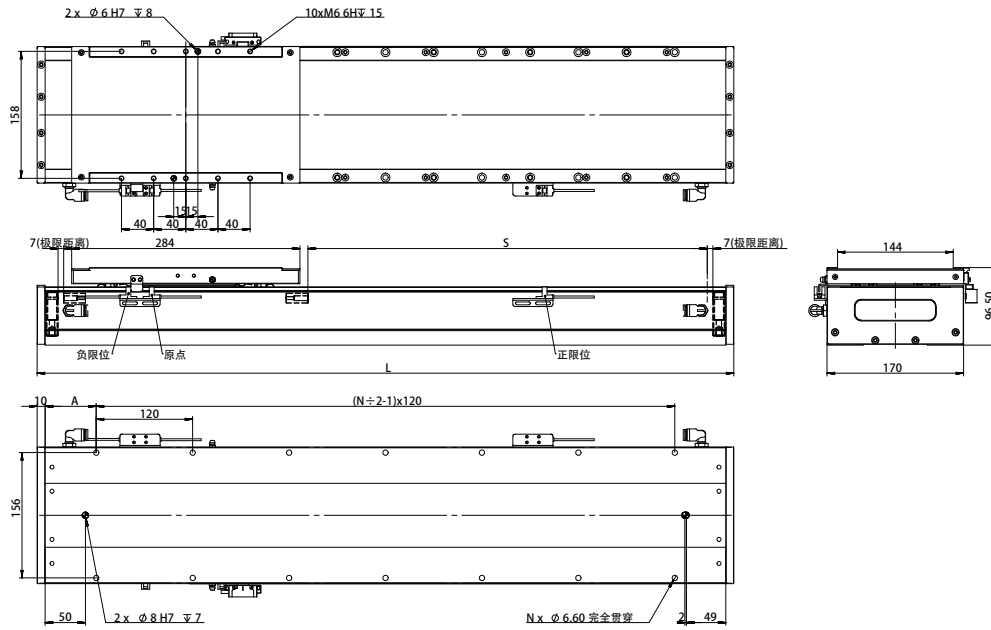
TIC series

TU series

TSLM170-TUA38-1

TSLM170-TUA38-1

Unit: mm



Eff. Stroke: S	49	109	169	229	289	349	409	469	529	589	649	709	769	829	889	949	1009	1069	1129	1189
Mech. Stroke: S + All.	63	123	183	243	303	363	423	483	543	603	663	723	783	843	903	963	1023	1083	1143	1203
Total Length: L	419	479	539	599	659	719	779	839	899	959	1019	1079	1139	1199	1259	1319	1379	1439	1499	1559
No. of Holes: N	8	8	10	10	12	12	14	14	16	16	18	18	20	20	22	22	24	24	26	26
Hole to End: A	19.5	49.5	19.5	49.5	19.5	49.5	19.5	49.5	19.5	49.5	19.5	49.5	19.5	49.5	19.5	49.5	19.5	49.5	19.5	49.5
Mod. Wt. (kg)	12.8	14.2	16	17.6	19.2	20.8	22.4	24	25.6	27.2	28.8	30.4	32	33.6	35.2	36.8	38.4	40	41.6	43.2
Comp. Wt. (kg)	3.3																			

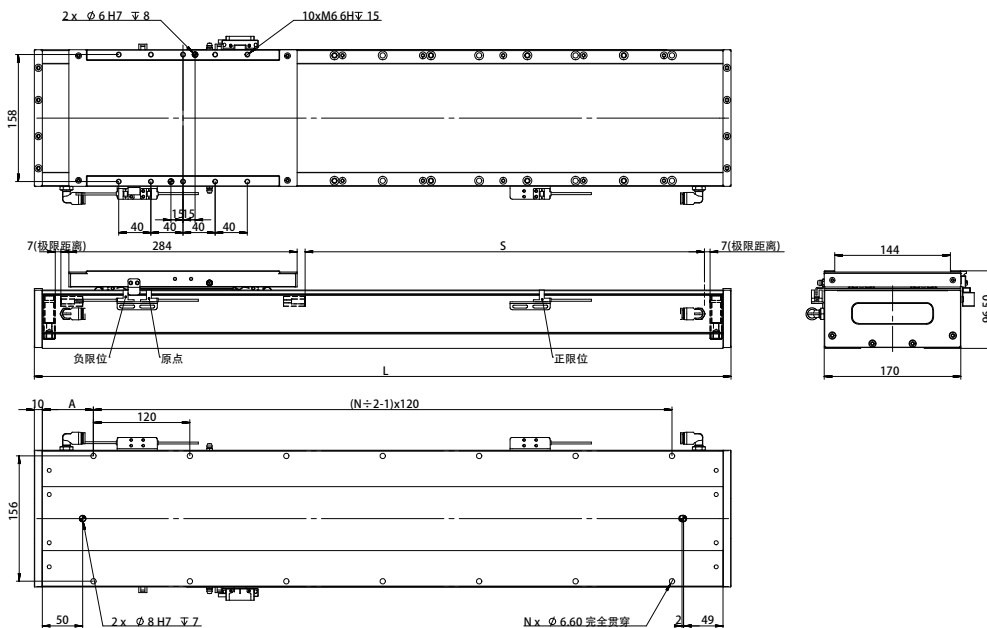
Eff. Stroke: S	1249	1309	1369	1429	1489	1549	1609	1669	1729	1789	1849	1909	1969	2029	2089	2149	2209	2269	2329	2389
Mech. Stroke: S + All.	1263	1323	1383	1443	1503	1563	1623	1683	1743	1803	1863	1923	1983	2043	2103	2163	2223	2283	2343	2403
Total Length: L	1619	1679	1739	1799	1859	1919	1979	2039	2099	2159	2219	2279	2339	2399	2459	2519	2579	2639	2699	2759
No. of Holes: N	28	28	30	30	32	32	34	34	36	36	38	38	40	40	42	42	44	44	46	46
Hole to End: A	19.5	49.5	19.5	49.5	19.5	49.5	19.5	49.5	19.5	49.5	19.5	49.5	19.5	49.5	19.5	49.5	19.5	49.5	19.5	49.5
Mod. Wt. (kg)	44.8	46.4	48	49.6	51.2	52.8	54.4	56	57.6	59.2	60.8	62.4	64.0	65.6	67.2	68.8	70.4	72.0	73.6	75.2
Comp. Wt. (kg)	3.3																			

This diagram is for reference only. Actual dimensions are based on the provided 2D/3D drawings. Product style, appearance, and specifications are subject to change without prior notice.

TSLM170-TUA38-2

TSLM170-TUA38-2

Unit:mm



Eff. Stroke: S	49	109	169	229	289	349	409	469	529	589	649	709	769	829	889	949	1009	1069	1129	1189
Mech. Stroke: S + All.	63	123	183	243	303	363	423	483	543	603	663	723	783	843	903	963	1023	1083	1143	1203
Total Length: L	419	479	539	599	659	719	779	839	899	959	1019	1079	1139	1199	1259	1319	1379	1439	1499	1559
No. of Holes: N	8	8	10	10	12	12	14	14	16	16	18	18	20	20	22	22	24	24	26	26
Hole to End: A	19.5	49.5	19.5	49.5	19.5	49.5	19.5	49.5	19.5	49.5	19.5	49.5	19.5	49.5	19.5	49.5	19.5	49.5	19.5	49.5
Mod. Wt. (kg)	13	14.6	16.2	17.8	19.4	21	22.6	24.2	25.8	27.4	29	30.6	32.2	33.8	35.4	37	38.6	40.2	41.8	43.4
Comp. Wt. (kg)	3.45																			

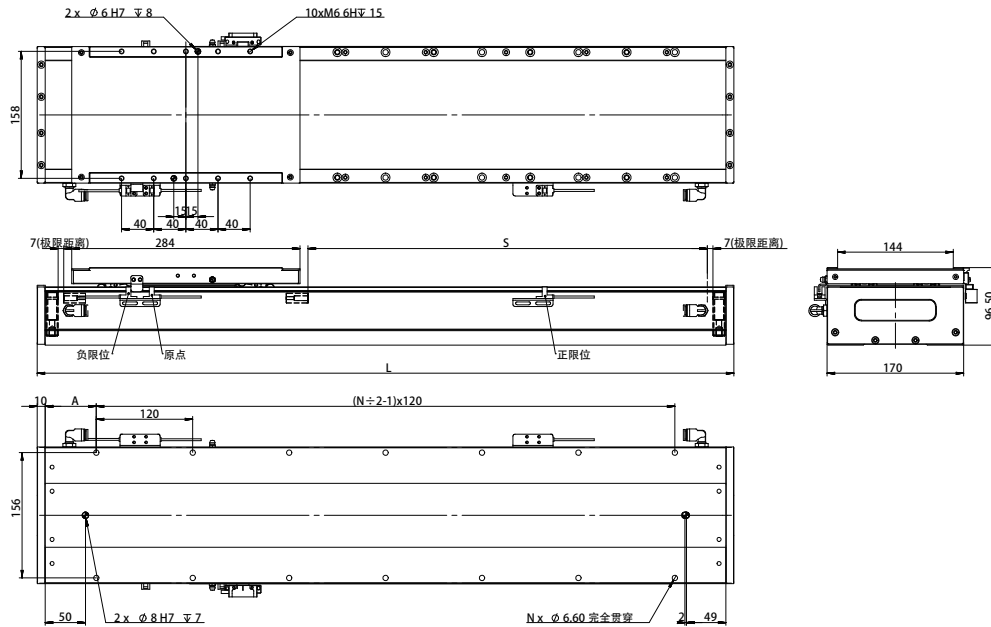
Eff. Stroke: S	1249	1309	1369	1429	1489	1549	1609	1669	1729	1789	1849	1909	1969	2029	2089	2149	2209	2269	2329	2389
Mech. Stroke: S + All.	1263	1323	1383	1443	1503	1563	1623	1683	1743	1803	1863	1923	1983	2043	2103	2163	2223	2283	2343	2403
Total Length: L	1619	1679	1739	1799	1859	1919	1979	2039	2099	2159	2219	2279	2339	2399	2459	2519	2579	2639	2699	2759
No. of Holes: N	28	28	30	30	32	32	34	34	36	36	38	38	40	40	42	42	44	44	46	46
Hole to End: A	19.5	49.5	19.5	49.5	19.5	49.5	19.5	49.5	19.5	49.5	19.5	49.5	19.5	49.5	19.5	49.5	19.5	49.5	19.5	49.5
Mod. Wt. (kg)	45	46.6	48.2	49.8	51.4	53	54.6	56.2	57.8	59.4	61	62.6	64.2	65.8	67.4	69	70.6	72.2	73.8	75.4
Comp. Wt. (kg)	3.45																			

This diagram is for reference only. Actual dimensions are based on the provided 2D/3D drawings. Product style, appearance, and specifications are subject to change without prior notice.

TSLM170-TUA38-3

TSLM170-TUA38-3

Unit: mm



Eff. Stroke: S	49	109	169	229	289	349	409	469	529	589	649	709	769	829	889	949	1009	1069	1129	1189
Mech. Stroke: S + All.	63	123	183	243	303	363	423	483	543	603	663	723	783	843	903	963	1023	1083	1143	1203
Total Length: L	419	479	539	599	659	719	779	839	899	959	1019	1079	1139	1199	1259	1319	1379	1439	1499	1559
No. of Holes: N	8	8	10	10	12	12	14	14	16	16	18	18	20	20	22	22	24	24	26	26
Hole to End: A	19.5	49.5	19.5	49.5	19.5	49.5	19.5	49.5	19.5	49.5	19.5	49.5	19.5	49.5	19.5	49.5	19.5	49.5	19.5	49.5
Mod. Wt. (kg)	13.2	14.8	16.4	18	19.6	21.2	22.8	24.4	26	27.6	29.2	30.8	32.4	34	35.6	37.2	38.8	40.4	42	43.6
Comp. Wt. (kg)	3.6																			

Eff. Stroke: S	1249	1309	1369	1429	1489	1549	1609	1669	1729	1789	1849	1909	1969	2029	2089	2149	2209	2269	2329	2389
Mech. Stroke: S + All.	1263	1323	1383	1443	1503	1563	1623	1683	1743	1803	1863	1923	1983	2043	2103	2163	2223	2283	2343	2403
Total Length: L	1619	1679	1739	1799	1859	1919	1979	2039	2099	2159	2219	2279	2339	2399	2459	2519	2579	2639	2699	2759
No. of Holes: N	28	28	30	30	32	32	34	34	36	36	38	38	40	40	42	42	44	44	46	46
Hole to End: A	19.5	49.5	19.5	49.5	19.5	49.5	19.5	49.5	19.5	49.5	19.5	49.5	19.5	49.5	19.5	49.5	19.5	49.5	19.5	49.5
Mod. Wt. (kg)	45.2	46.8	48.4	50	51.6	53.2	54.8	56.4	58	59.6	61.2	62.8	64.4	66	67.6	69.2	70.8	72.4	74	75.6
Comp. Wt. (kg)	3.6																			

This diagram is for reference only. Actual dimensions are based on the provided 2D/3D drawings. Product style, appearance, and specifications are subject to change without prior notice.

TSLM170-TUA38-4

TLM series

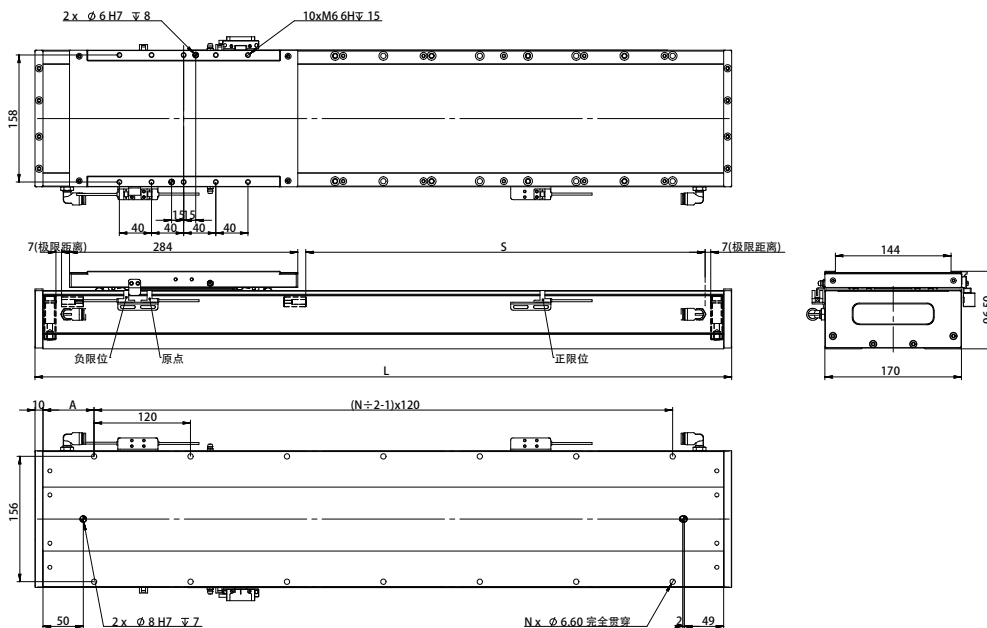
TSLM series

TIC series

TU series

TSLM170-TUA38-4

Unit:mm



Eff. Stroke: S	49	109	169	229	289	349	409	469	529	589	649	709	769	829	889	949	1009	1069	1129	1189
Mech. Stroke: S + All.	63	123	183	243	303	363	423	483	543	603	663	723	783	843	903	963	1023	1083	1143	1203
Total Length: L	419	479	539	599	659	719	779	839	899	959	1019	1079	1139	1199	1259	1319	1379	1439	1499	1559
No. of Holes: N	8	8	10	10	12	12	14	14	16	16	18	18	20	20	22	22	24	24	26	26
Hole to End: A	19.5	49.5	19.5	49.5	19.5	49.5	19.5	49.5	19.5	49.5	19.5	49.5	19.5	49.5	19.5	49.5	19.5	49.5	19.5	49.5
Mod. Wt. (kg)	13.4	15	16.6	18.2	19.8	21.4	23	24.6	26.2	27.8	29.4	31	32.6	34.2	35.8	37.4	39	40.6	42.2	43.8
Comp. Wt. (kg)	3.75																			

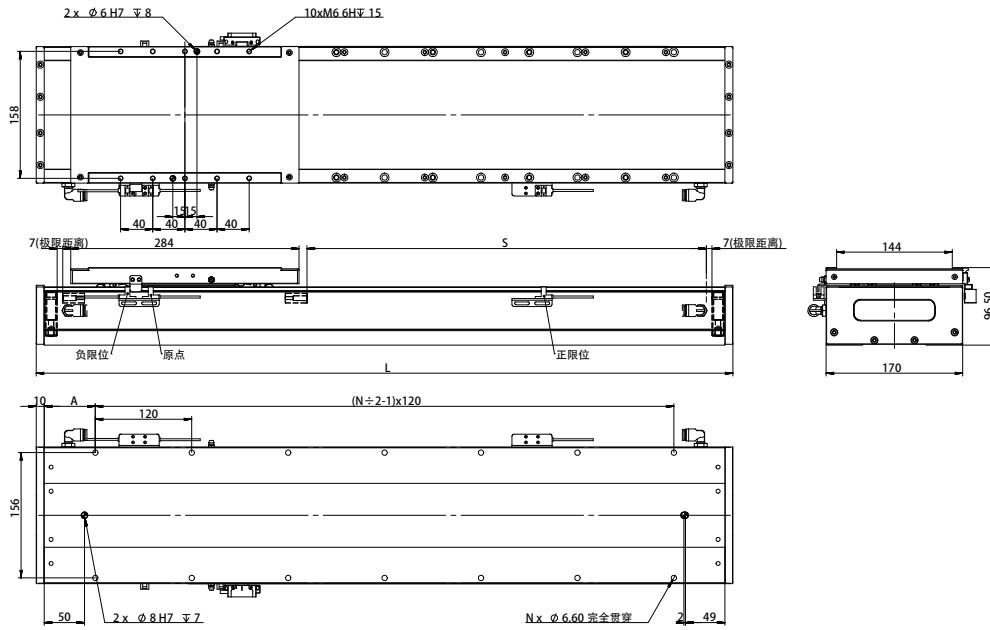
Eff. Stroke: S	1249	1309	1369	1429	1489	1549	1609	1669	1729	1789	1849	1909	1969	2029	2089	2149	2209	2269	2329	2389
Mech. Stroke: S + All.	1263	1323	1383	1443	1503	1563	1623	1683	1743	1803	1863	1923	1983	2043	2103	2163	2223	2283	2343	2403
Total Length: L	1619	1679	1739	1799	1859	1919	1979	2039	2099	2159	2219	2279	2339	2399	2459	2519	2579	2639	2699	2759
No. of Holes: N	28	28	30	30	32	32	34	34	36	36	38	38	40	40	42	42	44	44	46	46
Hole to End: A	19.5	49.5	19.5	49.5	19.5	49.5	19.5	49.5	19.5	49.5	19.5	49.5	19.5	49.5	19.5	49.5	19.5	49.5	19.5	49.5
Mod. Wt. (kg)	45.4	47	48.6	50.2	51.8	53.4	55	56.6	58.2	59.8	61.4	63	64.6	66.2	67.8	69.4	71	72.6	74.2	75.8
Comp. Wt. (kg)	3.75																			

This diagram is for reference only. Actual dimensions are based on the provided 2D/3D drawings. Product style, appearance, and specifications are subject to change without prior notice.

TSLM170-TUA38-5

TSLM170-TUA38-5

Unit:mm

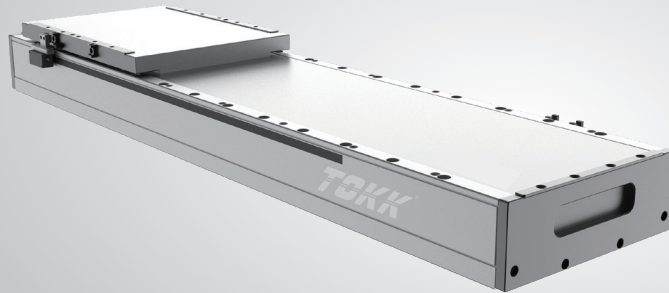


Eff. Stroke: S	49	109	169	229	289	349	409	469	529	589	649	709	769	829	889	949	1009	1069	1129	1189
Mech. Stroke: S + All.	63	123	183	243	303	363	423	483	543	603	663	723	783	843	903	963	1023	1083	1143	1203
Total Length: L	419	479	539	599	659	719	779	839	899	959	1019	1079	1139	1199	1259	1319	1379	1439	1499	1559
No. of Holes: N	8	8	10	10	12	12	14	14	16	16	18	18	20	20	22	22	24	24	26	26
Hole to End: A	19.5	49.5	19.5	49.5	19.5	49.5	19.5	49.5	19.5	49.5	19.5	49.5	19.5	49.5	19.5	49.5	19.5	49.5	19.5	49.5
Mod. Wt. (kg)	13.6	15.2	16.8	18.4	20	21.6	23.2	24.8	26.4	28	29.6	31.2	32.8	34.4	36	37.6	39.2	40.8	42.4	44
Comp. Wt. (kg)	3.9																			

Eff. Stroke: S	1249	1309	1369	1429	1489	1549	1609	1669	1729	1789	1849	1909	1969	2029	2089	2149	2209	2269	2329	2389
Mech. Stroke: S + All.	1263	1323	1383	1443	1503	1563	1623	1683	1743	1803	1863	1923	1983	2043	2103	2163	2223	2283	2343	2403
Total Length: L	1619	1679	1739	1799	1859	1919	1979	2039	2099	2159	2219	2279	2339	2399	2459	2519	2579	2639	2699	2759
No. of Holes: N	28	28	30	30	32	32	34	34	36	36	38	38	40	40	42	42	44	44	46	46
Hole to End: A	19.5	49.5	19.5	49.5	19.5	49.5	19.5	49.5	19.5	49.5	19.5	49.5	19.5	49.5	19.5	49.5	19.5	49.5	19.5	49.5
Mod. Wt. (kg)	45.6	47.2	48.8	50.4	52	53.6	55.2	56.8	58.4	60	61.6	63.2	64.8	66.4	68	69.6	71.2	72.8	74.4	76
Comp. Wt. (kg)	3.9																			

This diagram is for reference only. Actual dimensions are based on the provided 2D/3D drawings. Product style, appearance, and specifications are subject to change without prior notice.

Linear module TSLM210 series



Continuous thrust **138N~567N**

Peak thrust **371N~1566N**

Temperature rise **< 0.05°C/W**

Thrust fluctuation **< 2%**

Product parameter

Motor Model	TICA75-1	TICA75-2	TICA75-3	TICA95-1	TICA95-2	TICA95-3
Cont. Thrust (N)	138	276	414	189	378	567
Peak Thrust (N)	371	742	1113	522	1044	1566
Cont. Current (A)	3.23	3.23	3.23	3.28	3.28	3.28
Max. Current (A)	10.31	10.31	10.31	10.3	10.3	10.3
Max. Speed* ¹ (m/s)	5					
Max. Accel.* ¹ (m/s ²)	50					
Repeatability (μm)	Magnetic Scale: ±3; Optical Scale: ±2					
Max. Load* ¹ (kg)	200					
Height (mm)	96.5					
Stroke* ² (mm)	35~1985(50 pitch)	47~1997(50 pitch)	10~1960(50 pitch)	35~1985(50 pitch)	47~1997(50 pitch)	10~1960(50 pitch)

*¹ Maximum acceleration, maximum speed, and maximum load are reference values. Actual values should be comprehensively evaluated based on the motion plan. If the actual parameters exceed the reference values, please contact the manufacturer for assessment.

*² For longer strokes, please contact the manufacturer.

TLM series

TSLM series

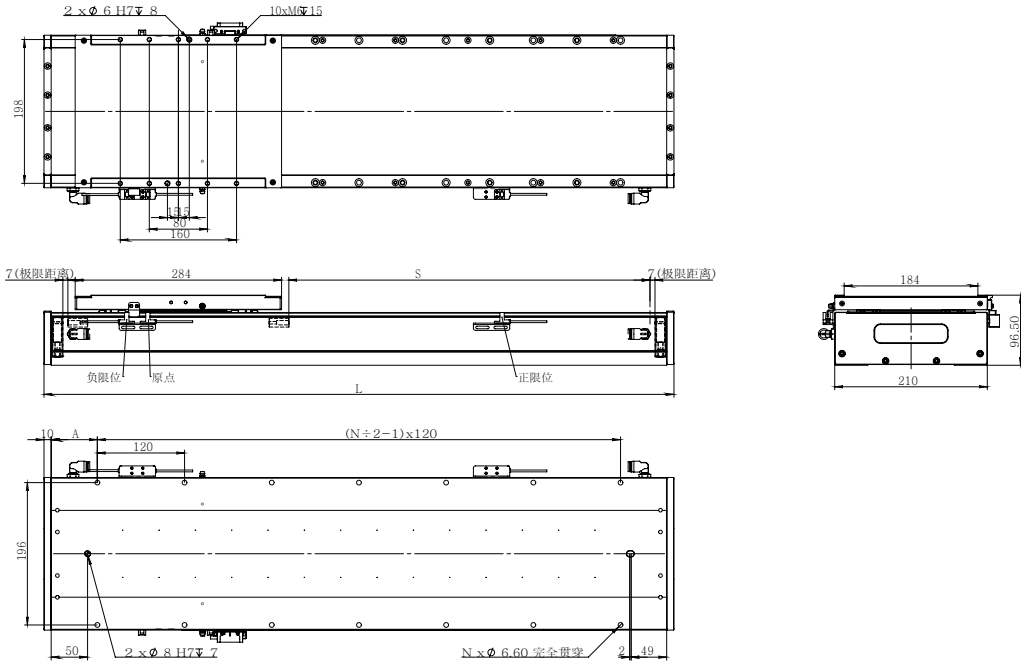
TIC series

TU series

TSLM210-TICA75-1

TSLM210-TICA75-1

Unit:mm



Eff. Stroke: S	35	85	135	185	235	285	335	385	435	485	585	635	685	735	785	835	885	935	985	1035
Mech. Stroke: S + All.	49	99	149	199	249	299	349	399	449	499	599	649	699	749	799	849	899	949	999	1049
Total Length: L	405	455	505	555	605	655	705	755	805	855	955	1005	1055	1105	1155	1205	1255	1305	1355	1405
No. of Holes: N	8	8	8	10	10	12	12	12	14	14	16	18	18	18	20	20	22	22	22	24
Hole to End: A	12.5	37.5	62.5	27.5	52.5	17.5	42.5	67.5	32.5	57.5	47.5	12.5	37.5	62.5	27.5	52.5	17.5	42.5	67.5	32.5
Mod. Wt. (kg)	14.7	15.9	17.1	18.3	19.5	20.7	21.9	23.1	24.3	25.5	27.9	29.1	30.3	31.5	32.7	33.9	35.1	36.3	37.5	38.9
Comp. Wt. (kg)	5.1																			

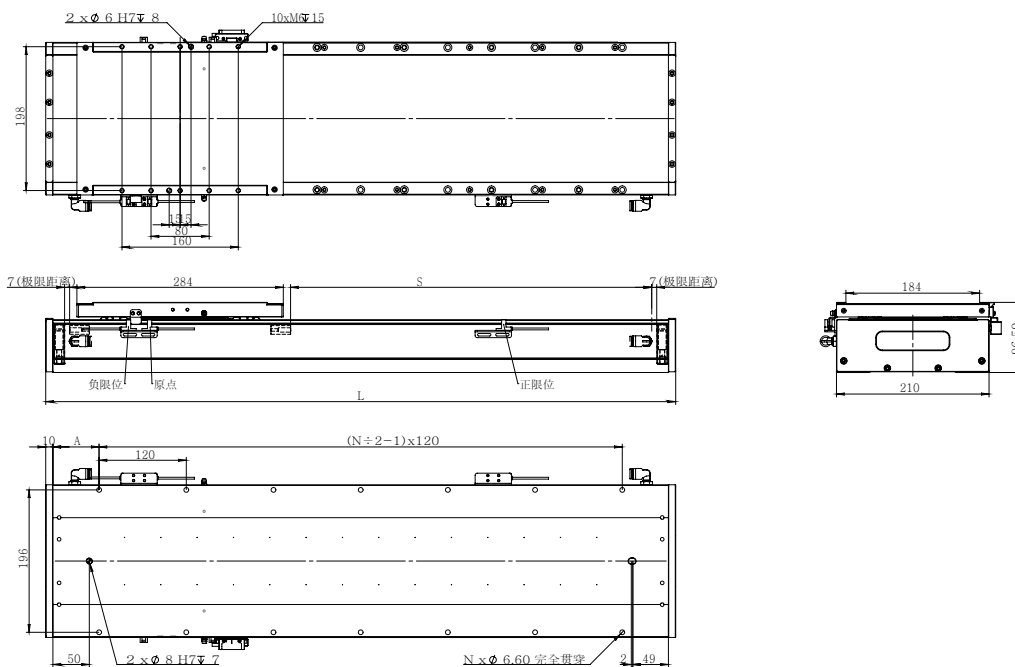
Eff. Stroke: S	1085	1135	1185	1235	1285	1335	1385	1435	1485	1085	1535	1585	1635	1685	1735	1785	1835	1885	1935	1985
Mech. Stroke: S + All.	1099	1149	1199	1249	1299	1349	1399	1449	1499	1099	1549	1599	1649	1699	1749	1799	1849	1899	1949	1999
Total Length: L	1455	1505	1555	1605	1655	1705	1755	1805	1855	1455	1905	1955	2005	2055	2105	2155	2205	2255	2305	2355
No. of Holes: N	24	26	26	28	28	28	30	30	32	24	32	32	34	34	36	36	38	38	38	40
Hole to End: A	57.5	22.5	47.5	12.5	37.5	62.5	27.5	52.5	17.5	57.5	42.5	67.5	32.5	57.5	22.5	47.5	12.5	37.5	62.5	27.5
Mod. Wt. (kg)	40.1	41.3	42.5	43.7	44.9	46.1	47.3	48.5	49.7	40.1	50.9	52.1	53.3	54.5	55.7	56.9	57.1	58.3	59.5	61.1
Comp. Wt. (kg)	5.1																			

This diagram is for reference only. Actual dimensions are based on the provided 2D/3D drawings. Product style, appearance, and specifications are subject to change without prior notice.

TSLM210-TICA75-2

TSLM210-TICA75-2

Unit:mm



Eff. Stroke: S	47	97	147	197	247	297	347	397	447	497	547	597	647	697	747	797	847	897	947	997
Mech. Stroke: S + All.	61	111	161	211	261	311	361	411	461	511	561	611	661	711	761	811	861	911	961	1011
Total Length: L	417	467	517	567	617	667	717	767	817	867	917	967	1017	1067	1117	1167	1217	1267	1317	1367
No. of Holes: N	8	8	8	10	10	12	12	14	14	14	16	16	18	18	18	20	20	22	22	24
Hole to End: A	18.5	43.5	68.5	33.5	58.5	33.5	48.5	13.5	38.5	63.5	28.5	53.5	18.5	43.5	68.5	33.5	58.5	33.5	48.5	13.5
Mod. Wt. (kg)	16.9	18.1	19.3	20.5	21.7	22.9	24.1	25.3	26.5	27.68	28.9	30.1	31.3	32.5	33.7	34.9	36.1	37.3	38.5	39.7
Comp. Wt. (kg)	6																			

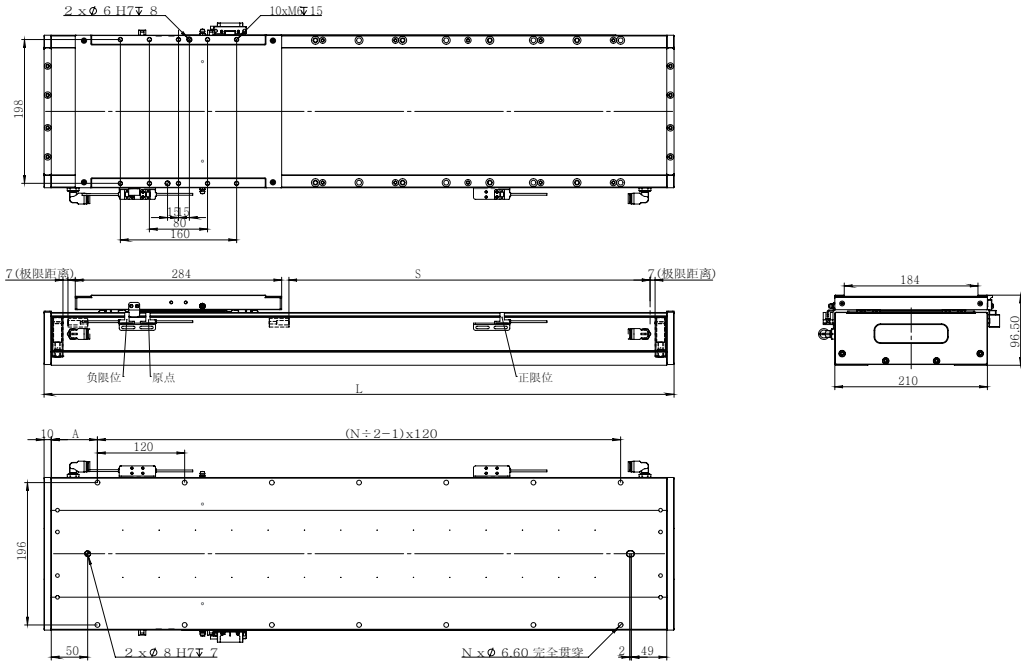
Eff. Stroke: S	1047	1097	1147	1197	1247	1297	1347	1397	1447	1497	1547	1597	1647	1697	1747	1797	1847	1897	1947	1997
Mech. Stroke: S + All.	1061	1111	1161	1211	1261	1311	1361	1411	1461	1511	1561	1611	1661	1711	1761	1811	1861	1911	1961	2011
Total Length: L	1417	1467	1517	1567	1617	1667	1717	1767	1817	1867	1917	1967	2017	2067	2117	2167	2217	2267	2317	2367
No. of Holes: N	24	24	26	26	28	28	28	30	30	32	32	34	34	34	36	36	38	38	38	40
Hole to End: A	38.5	63.5	28.5	53.5	18.5	43.5	68.5	33.5	58.5	33.5	48.5	13.5	38.5	63.5	28.5	53.5	18.5	43.5	68.5	33.5
Mod. Wt. (kg)	40.9	42.1	43.3	44.5	45.7	46.9	48.1	49.3	50.5	51.7	52.9	54.1	55.3	56.5	57.7	58.9	60.1	61.1	62.3	63.5
Comp. Wt. (kg)	6																			

This diagram is for reference only. Actual dimensions are based on the provided 2D/3D drawings. Product style, appearance, and specifications are subject to change without prior notice.

TSLM210-TICA75-3

TSLM210-TICA75-3

Unit:mm



Eff. Stroke: S	10	60	110	160	210	260	310	360	410	460	510	560	610	660	710	760	810	860	910	960
Mech. Stroke: S + All.	24	74	124	174	224	274	324	374	424	474	524	574	624	674	724	774	824	874	924	974
Total Length: L	380	430	480	530	580	630	680	730	780	830	880	930	980	1030	1080	1130	1180	1230	1280	1330
No. of Holes: N	6	8	8	10	10	10	12	12	14	14	16	16	16	18	18	20	20	20	22	22
Hole to End: A	60	25	50	15	40	65	30	55	20	45	10	35	60	25	50	15	40	65	30	55
Mod. Wt. (kg)	17.4	18.6	19.8	21	22.2	23.4	24.6	25.8	27	28.2	29.4	30.6	31.8	33	34.2	35.4	36.6	37.8	39	40.2
Comp. Wt. (kg)	6.4																			

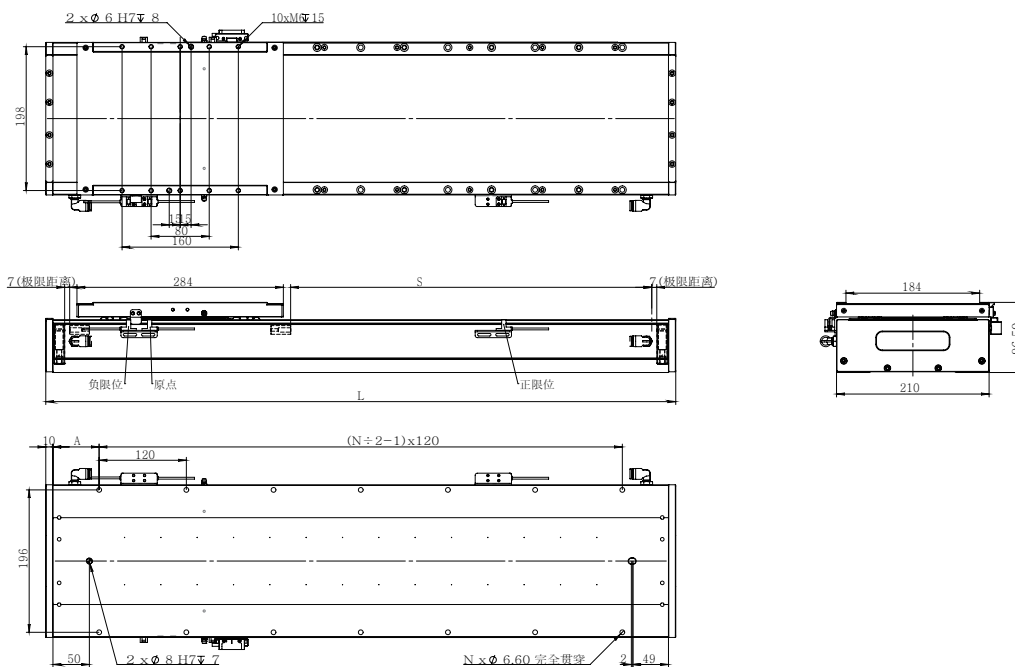
Eff. Stroke: S	1010	1060	1110	1160	1210	1260	1310	1360	1410	1460	1510	1560	1610	1660	1710	1760	1810	1860	1910	1960
Mech. Stroke: S + All.	1024	1074	1124	1174	1224	1274	1324	1374	1424	1474	1524	1574	1624	1674	1724	1774	1824	1874	1924	1974
Total Length: L	1380	1430	1480	1530	1580	1630	1680	1730	1780	1830	1880	1930	1980	2030	2080	2130	2180	2230	2280	2330
No. of Holes: N	24	24	26	26	26	28	28	30	30	30	32	32	34	34	36	36	36	38	38	40
Hole to End: A	20	45	10	35	60	25	50	15	40	65	30	55	20	45	10	35	60	25	50	15
Mod. Wt. (kg)	41.4	42.6	43.8	45	46.2	47.4	48.6	49.8	51	52.2	53.4	54.6	55.8	57	58.2	59.4	60.6	61.8	63	64.2
Comp. Wt. (kg)	6.4																			

This diagram is for reference only. Actual dimensions are based on the provided 2D/3D drawings. Product style, appearance, and specifications are subject to change without prior notice.

TSLM210-TICA95-1

TSLM210-TICA95-1

Unit:mm



Eff. Stroke: S	35	85	135	185	235	285	335	385	435	485	585	635	685	735	785	835	885	935	985	1035
Mech. Stroke: S + All.	49	99	149	199	249	299	349	399	449	499	599	649	699	749	799	849	899	949	999	1049
Total Length: L	405	455	505	555	605	655	705	755	805	855	955	1005	1055	1105	1155	1205	1255	1305	1355	1405
No. of Holes: N	8	8	8	10	10	12	12	12	14	14	16	18	18	18	20	20	22	22	22	24
Hole to End: A	12.5	37.5	62.5	27.5	52.5	17.5	42.5	67.5	32.5	57.5	47.5	12.5	37.5	62.5	27.5	52.5	17.5	42.5	67.5	32.5
Mod. Wt. (kg)	14.7	15.9	17.1	18.3	19.5	20.7	21.9	23.1	24.3	25.5	27.9	29.1	30.3	31.5	32.7	33.9	35.1	36.3	37.5	38.9
Comp. Wt. (kg)	5.5																			

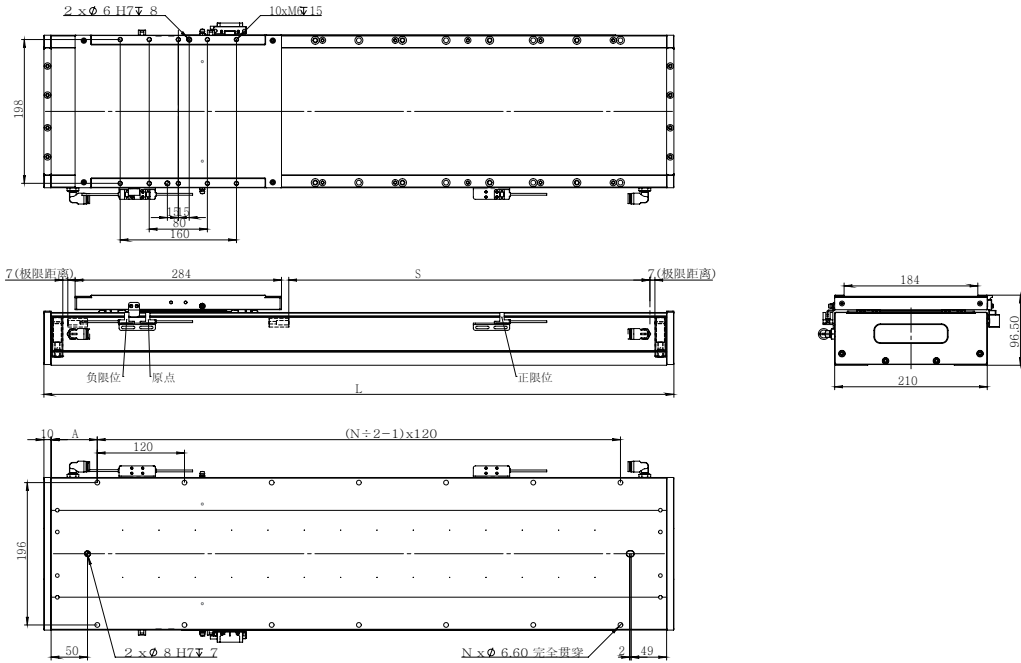
Eff. Stroke: S	1085	1135	1185	1235	1285	1335	1385	1435	1485	1085	1535	1585	1635	1685	1735	1785	1835	1885	1935	1985
Mech. Stroke: S + All.	1099	1149	1199	1249	1299	1349	1399	1449	1499	1099	1549	1599	1649	1699	1749	1799	1849	1899	1949	1999
Total Length: L	1455	1505	1555	1605	1655	1705	1755	1805	1855	1455	1905	1955	2005	2055	2105	2155	2205	2255	2305	2355
No. of Holes: N	24	26	26	28	28	28	30	30	32	24	32	32	34	34	36	36	38	38	38	40
Hole to End: A	57.5	22.5	47.5	12.5	37.5	62.5	27.5	52.5	17.5	57.5	42.5	67.5	32.5	57.5	22.5	47.5	12.5	37.5	62.5	27.5
Mod. Wt. (kg)	40.1	41.3	42.5	43.7	44.9	46.1	47.3	48.5	49.7	40.1	50.9	52.1	53.3	54.5	55.7	56.9	57.1	58.3	59.5	61.1
Comp. Wt. (kg)	5.5																			

This diagram is for reference only. Actual dimensions are based on the provided 2D/3D drawings. Product style, appearance, and specifications are subject to change without prior notice.

TSLM210-TICA95-2

TSLM210-TICA95-2

Unit:mm



Eff. Stroke: S	47	97	147	197	247	297	347	397	447	497	547	597	647	697	747	797	847	897	947	997
Mech. Stroke: S + All.	61	111	161	211	261	311	361	411	461	511	561	611	661	711	761	811	861	911	961	1011
Total Length: L	417	467	517	567	617	667	717	767	817	867	917	967	1017	1067	1117	1167	1217	1267	1317	1367
No. of Holes: N	8	8	8	10	10	12	12	14	14	14	16	16	18	18	18	20	20	22	22	24
Hole to End: A	18.5	43.5	68.5	33.5	58.5	33.5	48.5	13.5	38.5	63.5	28.5	53.5	18.5	43.5	68.5	33.5	58.5	33.5	48.5	13.5
Mod. Wt. (kg)	16.9	18.1	19.3	20.5	21.7	22.9	24.1	25.3	26.5	27.68	28.9	30.1	31.3	32.5	33.7	34.9	36.1	37.3	38.5	39.7
Comp. Wt. (kg)	6.7																			

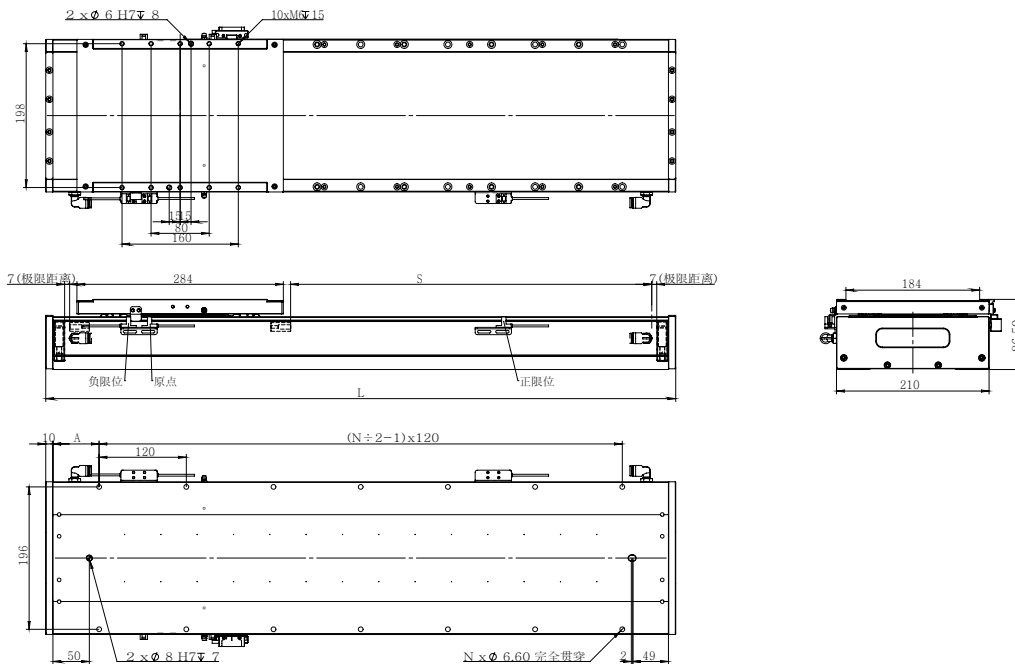
Eff. Stroke: S	1047	1097	1147	1197	1247	1297	1347	1397	1447	1497	1547	1597	1647	1697	1747	1797	1847	1897	1947	1997
Mech. Stroke: S + All.	1061	1111	1161	1211	1261	1311	1361	1411	1461	1511	1561	1611	1661	1711	1761	1811	1861	1911	1961	2011
Total Length: L	1417	1467	1517	1567	1617	1667	1717	1767	1817	1867	1917	1967	2017	2067	2117	2167	2217	2267	2317	2367
No. of Holes: N	24	24	26	26	28	28	28	30	30	32	32	34	34	34	36	36	38	38	38	40
Hole to End: A	38.5	63.5	28.5	53.5	18.5	43.5	68.5	33.5	58.5	33.5	48.5	13.5	38.5	63.5	28.5	53.5	18.5	43.5	68.5	33.5
Mod. Wt. (kg)	40.9	42.1	43.3	44.5	45.7	46.9	48.1	49.3	50.5	51.7	52.9	54.1	55.3	56.5	57.7	58.9	60.1	61.1	62.3	63.5
Comp. Wt. (kg)	6.7																			

This diagram is for reference only. Actual dimensions are based on the provided 2D/3D drawings. Product style, appearance, and specifications are subject to change without prior notice.

TSLM210-TICA95-3

TSLM210-TICA95-3

Unit:mm

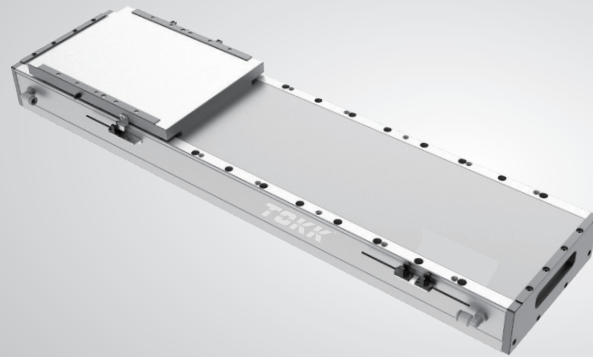


Eff. Stroke: S	10	60	110	160	210	260	310	360	410	460	510	560	610	660	710	760	810	860	910	960
Mech. Stroke: S + All.	24	74	124	174	224	274	324	374	424	474	524	574	624	674	724	774	824	874	924	974
Total Length: L	380	430	480	530	580	630	680	730	780	830	880	930	980	1030	1080	1130	1180	1230	1280	1330
No. of Holes: N	6	8	8	10	10	10	12	12	14	14	16	16	16	18	18	20	20	20	22	22
Hole to End: A	60	25	50	15	40	65	30	55	20	45	10	35	60	25	50	15	40	65	30	55
Mod. Wt. (kg)	17.4	18.6	19.8	21	22.2	23.4	24.6	25.8	27	28.2	29.4	30.6	31.8	33	34.2	35.4	36.6	37.8	39	40.2
Comp. Wt. (kg)	7.5																			

Eff. Stroke: S	1010	1060	1110	1160	1210	1260	1310	1360	1410	1460	1510	1560	1610	1660	1710	1760	1810	1860	1910	1960
Mech. Stroke: S + All.	1024	1074	1124	1174	1224	1274	1324	1374	1424	1474	1524	1574	1624	1674	1724	1774	1824	1874	1924	1974
Total Length: L	1380	1430	1480	1530	1580	1630	1680	1730	1780	1830	1880	1930	1980	2030	2080	2130	2180	2230	2280	2330
No. of Holes: N	24	24	26	26	26	28	28	30	30	30	32	32	34	34	36	36	36	38	38	40
Hole to End: A	20	45	10	35	60	25	50	15	40	65	30	55	20	45	10	35	60	25	50	15
Mod. Wt. (kg)	41.4	42.6	43.8	45	46.2	47.4	48.6	49.8	51	52.2	53.4	54.6	55.8	57	58.2	59.4	60.6	61.8	63	64.2
Comp. Wt. (kg)	7.5																			

This diagram is for reference only. Actual dimensions are based on the provided 2D/3D drawings. Product style, appearance, and specifications are subject to change without prior notice.

Linear module TSLM210 series



Continuous thrust **51N~255N**

Peak thrust **288N~1440N**

Temperature rise **< 0.07°C/W**

Thrust fluctuation **< 2%**

Product parameter

Motor Model	TUB38-1	TUB38-2	TUB38-3	TUB38-4	TUB38-5
Cont. Thrust (N)	51	102	153	204	255
Peak Thrust (N)	288	576	864	1152	1440
Cont. Current (A)	2.54	2.54	2.54	2.54	2.54
Max. Current (A)	14.3	14.3	14.3	14.3	14.3
Max. Speed* ¹ (m/s)	4				
Max. Accel.* ¹ (m/s ²)	50				
Repeatability (μm)	Magnetic Scale: ±3; Optical Scale: ±2				
Max. Load* ¹ (kg)	80				
Height (mm)	96.5				
Stroke* ² (mm)	49~1789(60 pitch)				

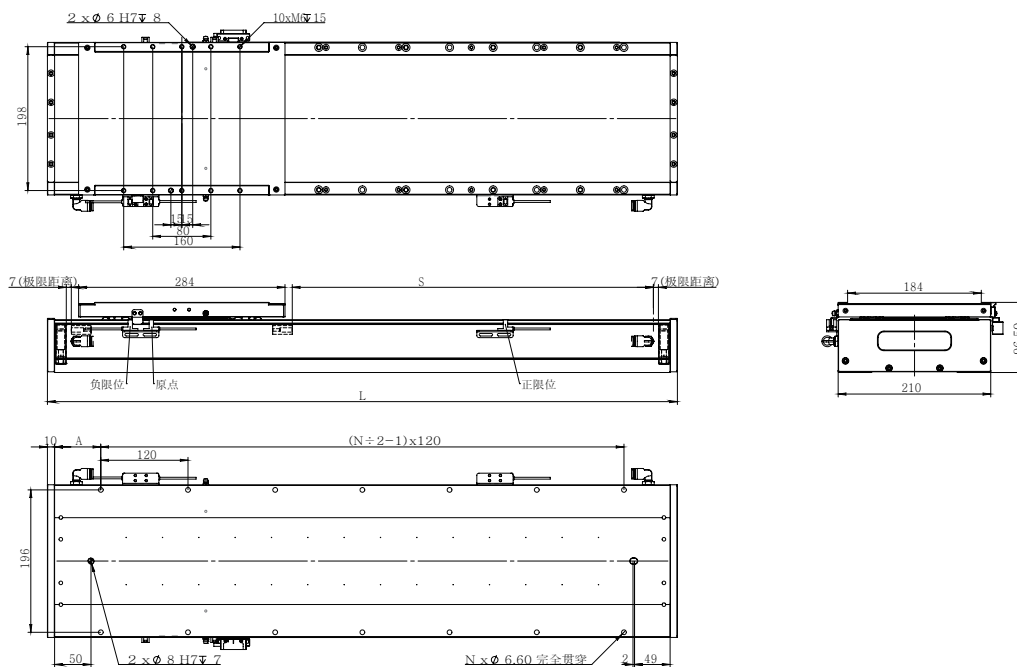
*¹ Maximum acceleration, maximum speed, and maximum load are reference values. Actual values should be comprehensively evaluated based on the motion plan. If the actual parameters exceed the reference values, please contact the manufacturer for assessment.

*² For longer strokes, please contact the manufacturer.

TSLM210-TUB38-1

TSLM210-TUB38-1

Unit:mm



Eff. Stroke: S	49	109	169	229	289	349	409	469	529	589	649	709	769	829	889	949	1009	1069	1129	1189
Mech. Stroke: S + All.	63	123	183	243	303	363	423	483	543	603	663	723	783	843	903	963	1023	1083	1143	1203
Total Length: L	419	479	539	599	659	719	779	839	899	959	1019	1079	1139	1199	1259	1319	1379	1439	1499	1559
No. of Holes: N	8	8	10	10	12	12	14	14	16	16	18	18	20	20	22	22	24	24	26	26
Hole to End: A	19.5	49.5	19.5	49.5	19.5	49.5	19.5	49.5	19.5	49.5	19.5	49.5	19.5	49.5	19.5	49.5	19.5	49.5	19.5	49.5
Mod. Wt. (kg)	14	16.2	18.4	20.6	22.8	25	27.2	29.4	31.6	33.8	36	38.2	40.4	42.6	44.8	47	49.2	51.4	53.6	55.8
Comp. Wt. (kg)	4.2																			

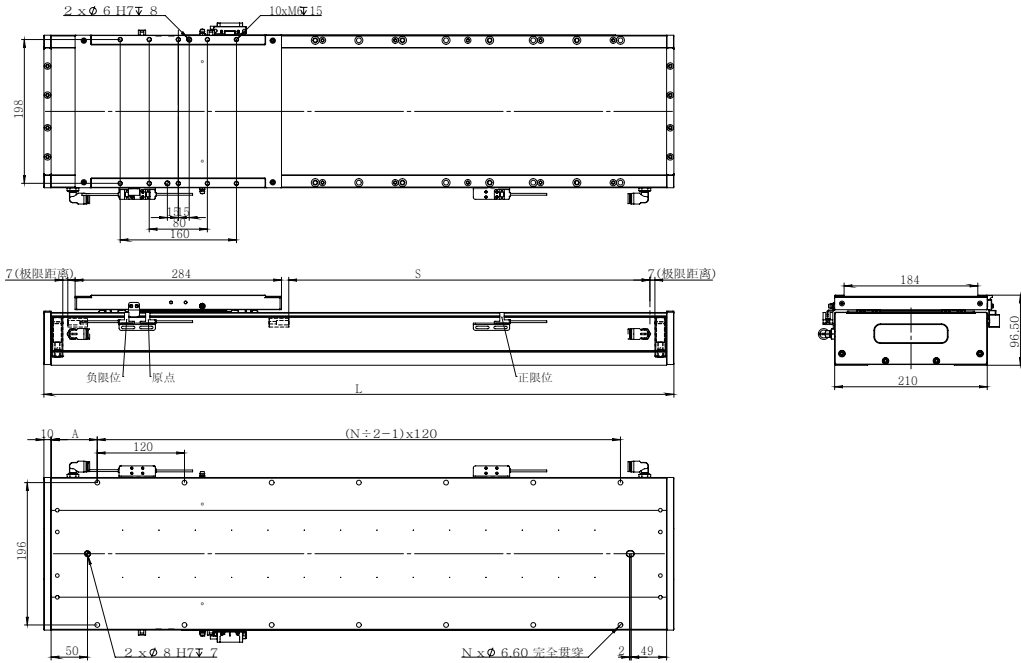
Eff. Stroke: S	1249	1309	1369	1429	1489	1549	1609	1669	1729	1789	1849	1909	1969	2029	2089	2149	2209	2269	2329	2389
Mech. Stroke: S + All.	1263	1323	1383	1443	1503	1563	1623	1683	1743	1803	1863	1923	1983	2043	2103	2163	2223	2283	2343	2403
Total Length: L	1619	1679	1739	1799	1859	1919	1979	2039	2099	2159	2219	2279	2339	2399	2459	2519	2579	2639	2699	2759
No. of Holes: N	28	28	30	30	32	32	34	34	36	36	38	38	40	40	42	42	44	44	46	46
Hole to End: A	19.5	49.5	19.5	49.5	19.5	49.5	19.5	49.5	19.5	49.5	19.5	49.5	19.5	49.5	19.5	49.5	19.5	49.5	19.5	49.5
Mod. Wt. (kg)	58	60.2	62.4	64.6	66.8	69	71.2	73.4	75.6	77.8	80	82.2	84.4	86.6	88.8	91	93.2	95.4	97.6	99.8
Comp. Wt. (kg)	4.2																			

This diagram is for reference only. Actual dimensions are based on the provided 2D/3D drawings. Product style, appearance, and specifications are subject to change without prior notice.

TSLM210-TUB38-2

TSLM210-TUB38-2

Unit: mm



Eff. Stroke: S	49	109	169	229	289	349	409	469	529	589	649	709	769	829	889	949	1009	1069	1129	1189
Mech. Stroke: S + All.	63	123	183	243	303	363	423	483	543	603	663	723	783	843	903	963	1023	1083	1143	1203
Total Length: L	419	479	539	599	659	719	779	839	899	959	1019	1079	1139	1199	1259	1319	1379	1439	1499	1559
No. of Holes: N	8	8	10	10	12	12	14	14	16	16	18	18	20	20	22	22	24	24	26	26
Hole to End: A	19.5	49.5	19.5	49.5	19.5	49.5	19.5	49.5	19.5	49.5	19.5	49.5	19.5	49.5	19.5	49.5	19.5	49.5	19.5	49.5
Mod. Wt. (kg)	14.2	16.4	18.6	20.8	23	25.2	27.4	29.6	31.8	34	36.2	38.4	40.6	42.8	45	47.2	49.4	51.6	53.8	56
Comp. Wt. (kg)	4.4																			

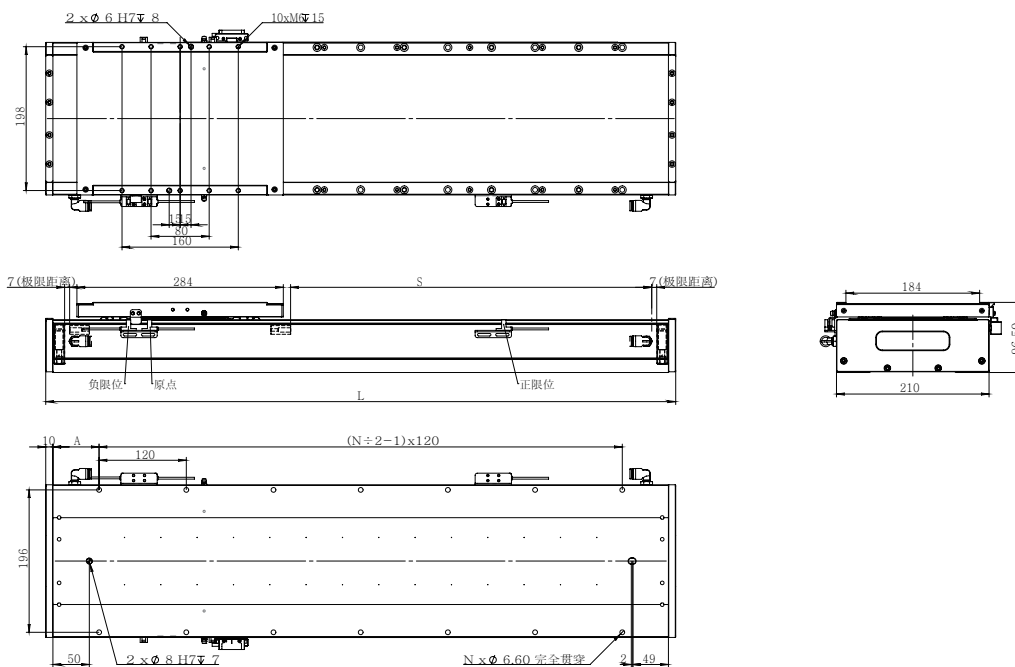
Eff. Stroke: S	1249	1309	1369	1429	1489	1549	1609	1669	1729	1789	1849	1909	1969	2029	2089	2149	2209	2269	2329	2389
Mech. Stroke: S + All.	1263	1323	1383	1443	1503	1563	1623	1683	1743	1803	1863	1923	1983	2043	2103	2163	2223	2283	2343	2403
Total Length: L	1619	1679	1739	1799	1859	1919	1979	2039	2099	2159	2219	2279	2339	2399	2459	2519	2579	2639	2699	2759
No. of Holes: N	28	28	30	30	32	32	34	34	36	36	38	38	40	40	42	42	44	44	46	46
Hole to End: A	19.5	49.5	19.5	49.5	19.5	49.5	19.5	49.5	19.5	49.5	19.5	49.5	19.5	49.5	19.5	49.5	19.5	49.5	19.5	49.5
Mod. Wt. (kg)	58.2	60.4	62.6	64.8	67	69.2	71.4	73.6	75.8	78	80.2	82.4	84.6	86.8	89	91.2	93.4	95.6	97.8	100
Comp. Wt. (kg)	4.4																			

This diagram is for reference only. Actual dimensions are based on the provided 2D/3D drawings. Product style, appearance, and specifications are subject to change without prior notice.

TSLM210-TUB38-3

TSLM210-TUB38-3

Unit:mm



Eff. Stroke: S	49	109	169	229	289	349	409	469	529	589	649	709	769	829	889	949	1009	1069	1129	1189
Mech. Stroke: S + All.	63	123	183	243	303	363	423	483	543	603	663	723	783	843	903	963	1023	1083	1143	1203
Total Length: L	419	479	539	599	659	719	779	839	899	959	1019	1079	1139	1199	1259	1319	1379	1439	1499	1559
No. of Holes: N	8	8	10	10	12	12	14	14	16	16	18	18	20	20	22	22	24	24	26	26
Hole to End: A	19.5	49.5	19.5	49.5	19.5	49.5	19.5	49.5	19.5	49.5	19.5	49.5	19.5	49.5	19.5	49.5	19.5	49.5	19.5	49.5
Mod. Wt. (kg)	14.4	16.6	18.8	21	23.2	25.4	27.6	29.8	32	34.2	36.4	38.6	40.8	43	45.2	47.4	49.6	51.8	54	56.2
Comp. Wt. (kg)	4.6																			

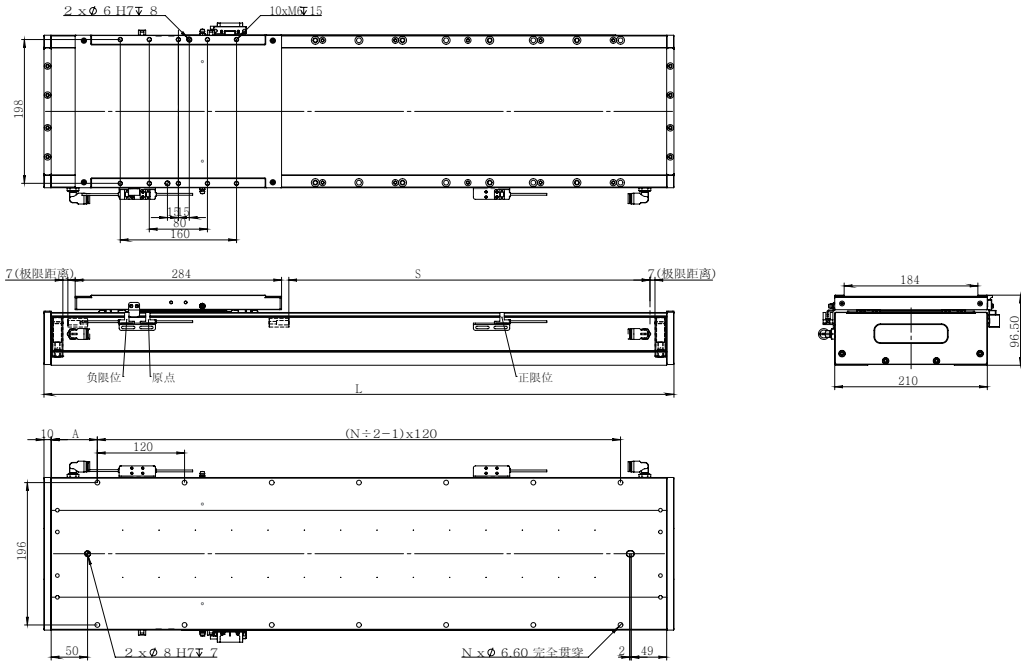
Eff. Stroke: S	1249	1309	1369	1429	1489	1549	1609	1669	1729	1789	1849	1909	1969	2029	2089	2149	2209	2269	2329	2389
Mech. Stroke: S + All.	1263	1323	1383	1443	1503	1563	1623	1683	1743	1803	1863	1923	1983	2043	2103	2163	2223	2283	2343	2403
Total Length: L	1619	1679	1739	1799	1859	1919	1979	2039	2099	2159	2219	2279	2339	2399	2459	2519	2579	2639	2699	2759
No. of Holes: N	28	28	30	30	32	32	34	34	36	36	38	38	40	40	42	42	44	44	46	46
Hole to End: A	19.5	49.5	19.5	49.5	19.5	49.5	19.5	49.5	19.5	49.5	19.5	49.5	19.5	49.5	19.5	49.5	19.5	49.5	19.5	49.5
Mod. Wt. (kg)	58.4	60.6	62.8	65	67.2	69.4	71.6	73.8	76	78.2	80.4	82.6	84.8	87	89.2	91.4	93.6	95.8	98	100.2
Comp. Wt. (kg)	4.6																			

This diagram is for reference only. Actual dimensions are based on the provided 2D/3D drawings. Product style, appearance, and specifications are subject to change without prior notice.

TSLM210-TUB38-4

TSLM210-TUB38-4

Unit:mm



Eff. Stroke: S	49	109	169	229	289	349	409	469	529	589	649	709	769	829	889	949	1009	1069	1129	1189
Mech. Stroke: S + All.	63	123	183	243	303	363	423	483	543	603	663	723	783	843	903	963	1023	1083	1143	1203
Total Length: L	419	479	539	599	659	719	779	839	899	959	1019	1079	1139	1199	1259	1319	1379	1439	1499	1559
No. of Holes: N	8	8	10	10	12	12	14	14	16	16	18	18	20	20	22	22	24	24	26	26
Hole to End: A	19.5	49.5	19.5	49.5	19.5	49.5	19.5	49.5	19.5	49.5	19.5	49.5	19.5	49.5	19.5	49.5	19.5	49.5	19.5	49.5
Mod. Wt. (kg)	14.6	16.8	19	21.2	23.4	25.6	27.8	30	32.2	34.4	36.6	38.8	41	43.2	45.4	47.6	49.8	52	54.2	56.8
Comp. Wt. (kg)	4.8																			

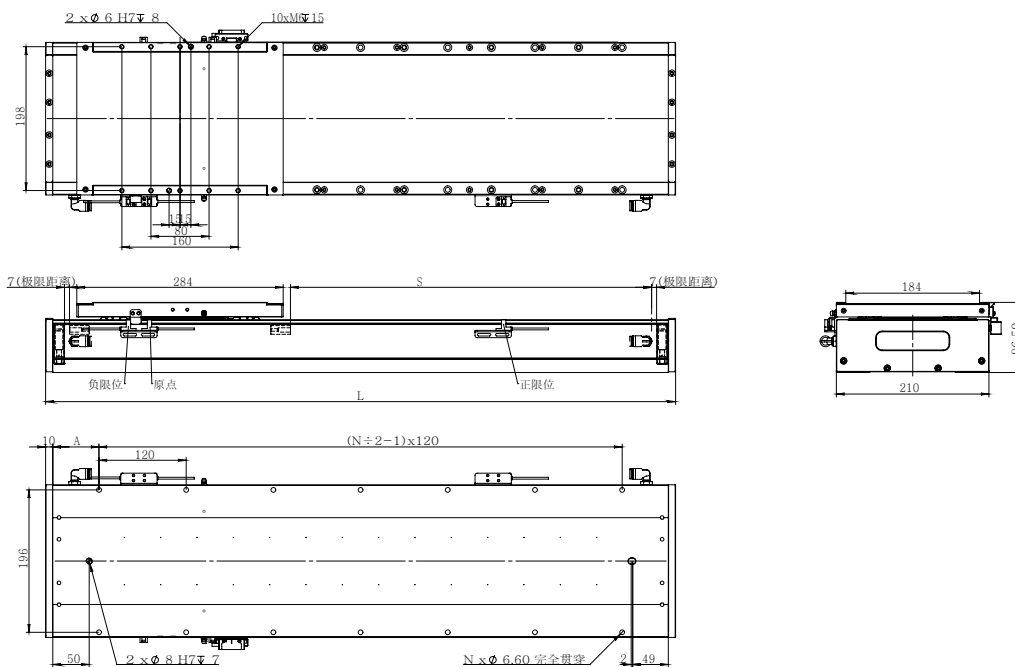
Eff. Stroke: S	1249	1309	1369	1429	1489	1549	1609	1669	1729	1789	1849	1909	1969	2029	2089	2149	2209	2269	2329	2389
Mech. Stroke: S + All.	1263	1323	1383	1443	1503	1563	1623	1683	1743	1803	1863	1923	1983	2043	2103	2163	2223	2283	2343	2403
Total Length: L	1619	1679	1739	1799	1859	1919	1979	2039	2099	2159	2219	2279	2339	2399	2459	2519	2579	2639	2699	2759
No. of Holes: N	28	28	30	30	32	32	34	34	36	36	38	38	40	40	42	42	44	44	46	46
Hole to End: A	19.5	49.5	19.5	49.5	19.5	49.5	19.5	49.5	19.5	49.5	19.5	49.5	19.5	49.5	19.5	49.5	19.5	49.5	19.5	49.5
Mod. Wt. (kg)	58.6	60.8	63	65.2	67.4	69.6	71.8	74	76.2	78.4	80.6	82.8	85.0	87.2	89.4	91.6	93.8	96	98.2	100.4
Comp. Wt. (kg)	4.8																			

This diagram is for reference only. Actual dimensions are based on the provided 2D/3D drawings. Product style, appearance, and specifications are subject to change without prior notice.

TSLM210-TUB38-5

TSLM210-TUB38-5

Unit:mm

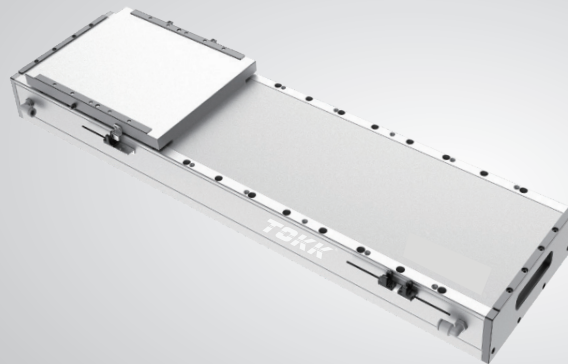


Eff. Stroke: S	49	109	169	229	289	349	409	469	529	589	649	709	769	829	889	949	1009	1069	1129	1189
Mech. Stroke: S + All.	63	123	183	243	303	363	423	483	543	603	663	723	783	843	903	963	1023	1083	1143	1203
Total Length: L	419	479	539	599	659	719	779	839	899	959	1019	1079	1139	1199	1259	1319	1379	1439	1499	1559
No. of Holes: N	8	8	10	10	12	12	14	14	16	16	18	18	20	20	22	22	24	24	26	26
Hole to End: A	19.5	49.5	19.5	49.5	19.5	49.5	19.5	49.5	19.5	49.5	19.5	49.5	19.5	49.5	19.5	49.5	19.5	49.5	19.5	49.5
Mod. Wt. (kg)	14.6	17	19.2	21.4	23.6	25.8	28	30.2	32.4	34.6	36.8	39	41.2	43.4	45.6	47.8	50	52.2	54.4	57
Comp. Wt. (kg)	5																			

Eff. Stroke: S	1249	1309	1369	1429	1489	1549	1609	1669	1729	1789	1849	1909	1969	2029	2089	2149	2209	2269	2329	2389
Mech. Stroke: S + All.	1263	1323	1383	1443	1503	1563	1623	1683	1743	1803	1863	1923	1983	2043	2103	2163	2223	2283	2343	2403
Total Length: L	1619	1679	1739	1799	1859	1919	1979	2039	2099	2159	2219	2279	2339	2399	2459	2519	2579	2639	2699	2759
No. of Holes: N	28	28	30	30	32	32	34	34	36	36	38	38	40	40	42	42	44	44	46	46
Hole to End: A	19.5	49.5	19.5	49.5	19.5	49.5	19.5	49.5	19.5	49.5	19.5	49.5	19.5	49.5	19.5	49.5	19.5	49.5	19.5	49.5
Mod. Wt. (kg)	58.8	61	63.2	65.4	67.6	69.8	72	74.2	76.4	78.6	80.8	83.0	85.2	87.4	89.6	91.8	94.0	96.2	98.4	100.6
Comp. Wt. (kg)	5																			

This diagram is for reference only. Actual dimensions are based on the provided 2D/3D drawings. Product style, appearance, and specifications are subject to change without prior notice.

Linear module TSLM230 series



Continuous thrust **234N~819N**

Peak thrust **648N~2277N**

Temperature rise **< 0.05°C/W**

Thrust fluctuation **< 2%**

Product parameter

Motor Model	TICA115-1	TICA115-2	TICA115-3	TICA125-1	TICA125-2	TICA125-3
Cont. Thrust (N)	234	468	702	273	546	819
Peak Thrust (N)	648	1296	1944	759	1518	2277
Cont. Current (A)	3.22	3.22	3.22	3.38	3.38	3.38
Max. Current (A)	10.29	10.29	10.29	10.28	10.28	10.28
Max. Speed* ¹ (m/s)	4					
Max. Accel.* ¹ (m/s ²)	50					
Repeatability (μm)	Magnetic Scale: ±3; Optical Scale: ±2					
Max. Load* ¹ (kg)	300					
Height (mm)	96.5					
Stroke* ² (mm)	35~1985(50 pitch)	47~1997(50 pitch)	10~1960(50 pitch)	35~1985(50 pitch)	47~1997(50 pitch)	10~1960(50 pitch)

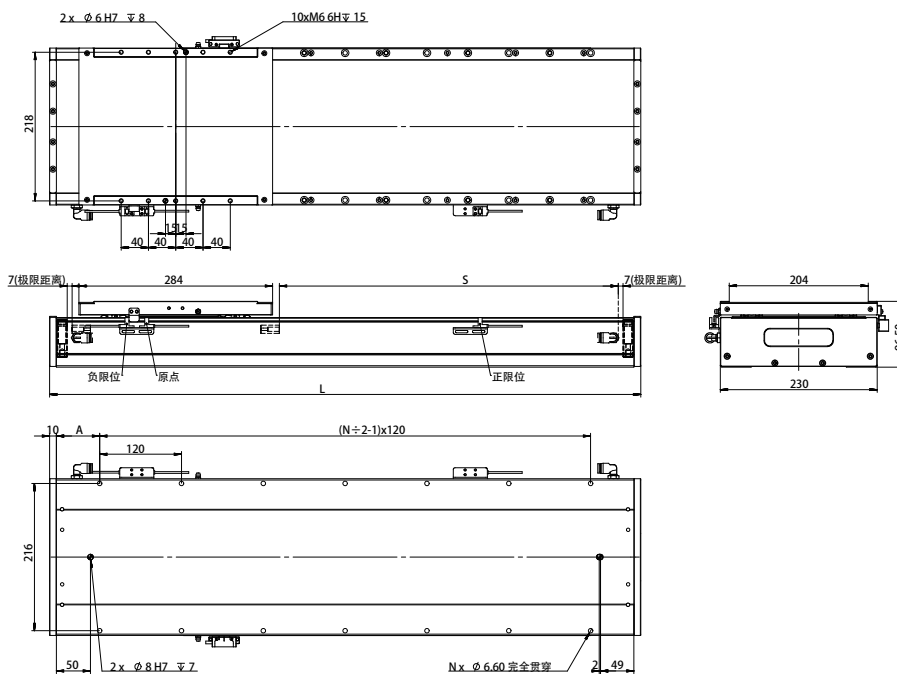
*¹ Maximum acceleration, maximum speed, and maximum load are reference values. Actual values should be comprehensively evaluated based on the motion plan. If the actual parameters exceed the reference values, please contact the manufacturer for assessment.

*² For longer strokes, please contact the manufacturer.

TSLM230-TICA115-1

TSLM230-TICA115-1

Unit:mm



Eff. Stroke: S	35	85	135	185	235	285	335	385	435	485	535	585	635	685	735	785	835	885	935	985
Mech. Stroke: S + All.	49	99	149	199	249	299	349	399	449	499	549	599	649	699	749	799	849	899	949	999
Total Length: L	405	455	505	555	605	655	705	755	805	855	905	955	1005	1055	1105	1155	1205	1255	1305	1355
No. of Holes: N	8	8	8	10	10	12	12	12	14	14	16	16	18	18	18	20	20	22	22	22
Hole to End: A	12.5	37.5	62.5	27.5	52.5	17.5	42.5	67.5	32.5	57.5	22.5	47.5	12.5	37.5	62.5	27.5	52.5	17.5	42.5	67.5
Mod. Wt. (kg)	19.1	20.4	21.7	23	23.3	24.6	25.9	27.2	28.5	29.8	31.2	32.4	33.7	35	36.3	37.6	38.9	40.2	41.5	42.8
Comp. Wt. (kg)	6.1																			

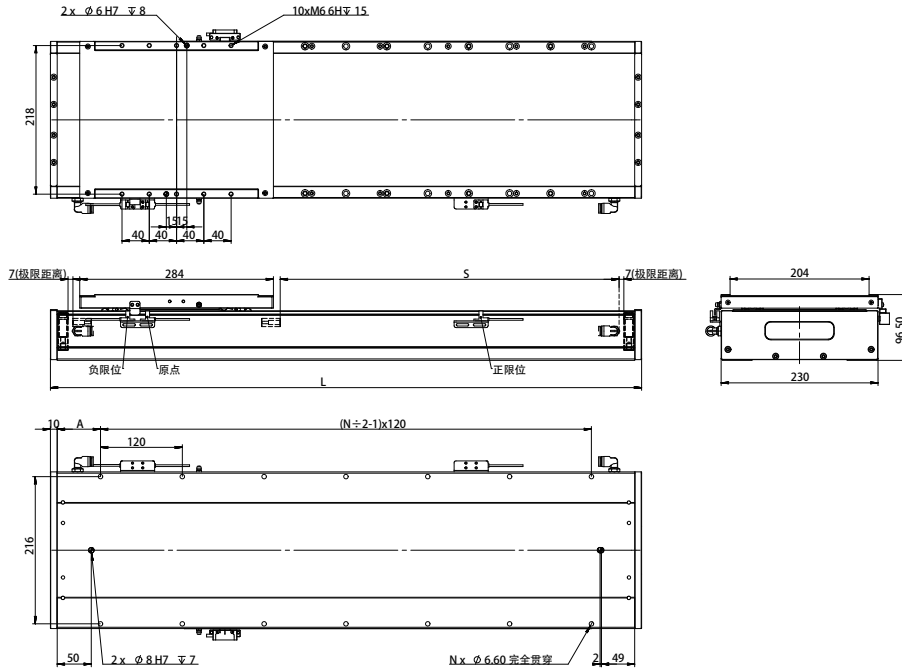
Eff. Stroke: S	1035	1085	1135	1185	1235	1285	1335	1385	1435	1485	1535	1585	1635	1685	1735	1785	1835	1885	1935	1985
Mech. Stroke: S + All.	1049	1099	1149	1199	1249	1299	1349	1399	1449	1499	1549	1599	1649	1699	1749	1799	1849	1899	1949	1999
Total Length: L	1405	1455	1505	1555	1605	1655	1705	1755	1805	1855	1905	1955	2005	2055	2105	2155	2205	2255	2305	2355
No. of Holes: N	24	24	26	26	28	28	28	30	30	32	32	32	34	34	36	36	38	38	38	40
Hole to End: A	32.5	57.5	22.5	47.5	12.5	37.5	62.5	27.5	52.5	17.5	42.5	67.5	32.5	57.5	22.5	47.5	12.5	37.5	62.5	27.5
Mod. Wt. (kg)	44.1	45.4	46.7	48	49.3	50.6	51.9	53.2	54.5	55.8	57.1	58.4	59.7	61	62.3	63.6	64.9	65.2	66.5	67.8
Comp. Wt. (kg)	6.1																			

This diagram is for reference only. Actual dimensions are based on the provided 2D/3D drawings. Product style, appearance, and specifications are subject to change without prior notice.

TSLM230-TICA115-2

TSLM230-TICA115-2

Unit:mm



Eff. Stroke: S	47	97	147	197	247	297	347	397	447	497	547	597	647	697	747	797	847	897	947	997
Mech. Stroke: S + All.	61	111	161	211	261	311	361	411	461	511	561	611	661	711	761	811	861	911	961	1011
Total Length: L	417	467	517	567	617	667	717	767	817	867	917	967	1017	1067	1117	1167	1217	1267	1317	1367
No. of Holes: N	8	8	8	10	10	12	12	14	14	14	16	16	18	18	18	20	20	22	22	24
Hole to End: A	18.5	43.5	68.5	33.5	58.5	33.5	48.5	13.5	38.5	63.5	28.5	53.5	18.5	43.5	68.5	33.5	58.5	33.5	48.5	13.5
Mod. Wt. (kg)	19.4	20.8	22.2	23.6	25	26.4	27.8	29.2	30.6	32	33.4	34.8	36.2	37.6	39	40.4	41.8	43.2	44.6	46
Comp. Wt. (kg)	7.7																			

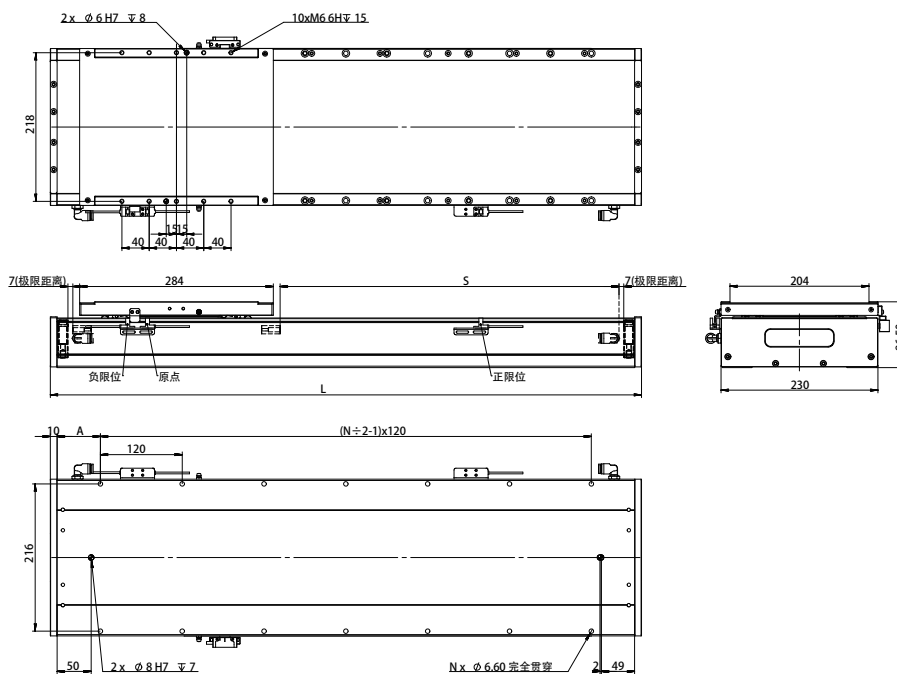
Eff. Stroke: S	1047	1097	1147	1197	1247	1297	1347	1397	1447	1497	1547	1597	1647	1697	1747	1797	1847	1897	1947	1997
Mech. Stroke: S + All.	1061	1111	1161	1211	1261	1311	1361	1411	1461	1511	1561	1611	1661	1711	1761	1811	1861	1911	1961	2011
Total Length: L	1417	1467	1517	1567	1617	1667	1717	1767	1817	1867	1917	1967	2017	2067	2117	2167	2217	2267	2317	2367
No. of Holes: N	24	24	26	26	28	28	28	30	30	32	32	34	34	34	36	36	38	38	38	40
Hole to End: A	38.5	63.5	28.5	53.5	18.5	43.5	68.5	33.5	58.5	33.5	48.5	13.5	38.5	63.5	28.5	53.5	18.5	43.5	68.5	33.5
Mod. Wt. (kg)	47.4	48.8	50.2	51.6	53	54.4	55.8	57.2	58.6	60	61.4	62.8	64.2	65.6	67	68.4	69.8	71.2	72.6	74
Comp. Wt. (kg)	7.7																			

This diagram is for reference only. Actual dimensions are based on the provided 2D/3D drawings. Product style, appearance, and specifications are subject to change without prior notice.

TSLM230-TICA115-3

TSLM230-TICA115-3

Unit:mm



Eff. Stroke: S	10	60	110	160	210	260	310	360	410	460	510	560	610	660	710	760	810	860	910	960
Mech. Stroke: S + All.	24	74	124	174	224	274	324	374	424	474	524	574	624	674	724	774	824	874	924	974
Total Length: L	380	430	480	530	580	630	680	730	780	830	880	930	980	1030	1080	1130	1180	1230	1280	1330
No. of Holes: N	6	8	8	10	10	10	12	12	14	14	16	16	16	18	18	20	20	20	22	22
Hole to End: A	60	25	50	15	40	65	30	55	20	45	10	35	60	25	50	15	40	65	30	55
Mod. Wt. (kg)	20.7	22.1	23.5	24.9	26.3	27.7	29.1	30.5	31.9	33.3	34.7	36.1	37.5	38.9	40.3	41.7	43.1	44.5	45.9	47.3
Comp. Wt. (kg)	8.9																			

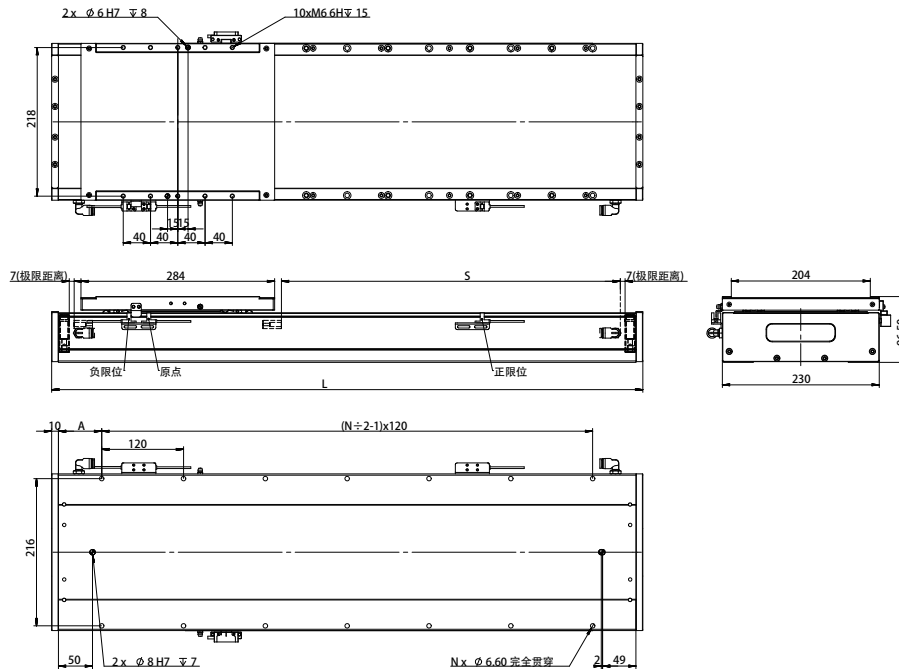
Eff. Stroke: S	1010	1060	1110	1160	1210	1260	1310	1360	1410	1460	1510	1560	1610	1660	1710	1760	1810	1860	1910	1960
Mech. Stroke: S + All.	1024	1074	1124	1174	1224	1274	1324	1374	1424	1474	1524	1574	1624	1674	1724	1774	1824	1874	1924	1974
Total Length: L	1380	1430	1480	1530	1580	1630	1680	1730	1780	1830	1880	1930	1980	2030	2080	2130	2180	2230	2280	2330
No. of Holes: N	24	24	26	26	26	28	28	30	30	30	32	32	34	34	36	36	36	38	38	40
Hole to End: A	20	45	10	35	60	25	50	15	40	65	30	55	20	45	10	35	60	25	50	15
Mod. Wt. (kg)	48.7	50.1	51.5	52.9	54.3	55.7	57.1	58.5	59.9	61.3	62.7	64.1	65.5	66.9	68.3	69.7	71.1	72.5	73.9	75.3
Comp. Wt. (kg)	8.9																			

This diagram is for reference only. Actual dimensions are based on the provided 2D/3D drawings. Product style, appearance, and specifications are subject to change without prior notice.

TSLM230-TICA125-1

TSLM230-TICA125-1

Unit:mm



Eff. Stroke: S	35	85	135	185	235	285	335	385	435	485	535	585	635	685	735	785	835	885	935	985
Mech. Stroke: S + All.	49	99	149	199	249	299	349	399	449	499	549	599	649	699	749	799	849	899	949	999
Total Length: L	405	455	505	555	605	655	705	755	805	855	905	955	1005	1055	1105	1155	1205	1255	1305	1355
No. of Holes: N	8	8	8	10	10	12	12	12	14	14	16	16	18	18	18	20	20	22	22	22
Hole to End: A	12.5	37.5	62.5	27.5	52.5	17.5	42.5	67.5	32.5	57.5	22.5	47.5	12.5	37.5	62.5	27.5	52.5	17.5	42.5	67.5
Mod. Wt. (kg)	19.1	20.4	21.7	23	23.3	24.6	25.9	27.2	28.5	29.8	31.2	32.4	33.7	35	36.3	37.6	38.9	40.2	41.5	42.8
Comp. Wt. (kg)	6.3																			

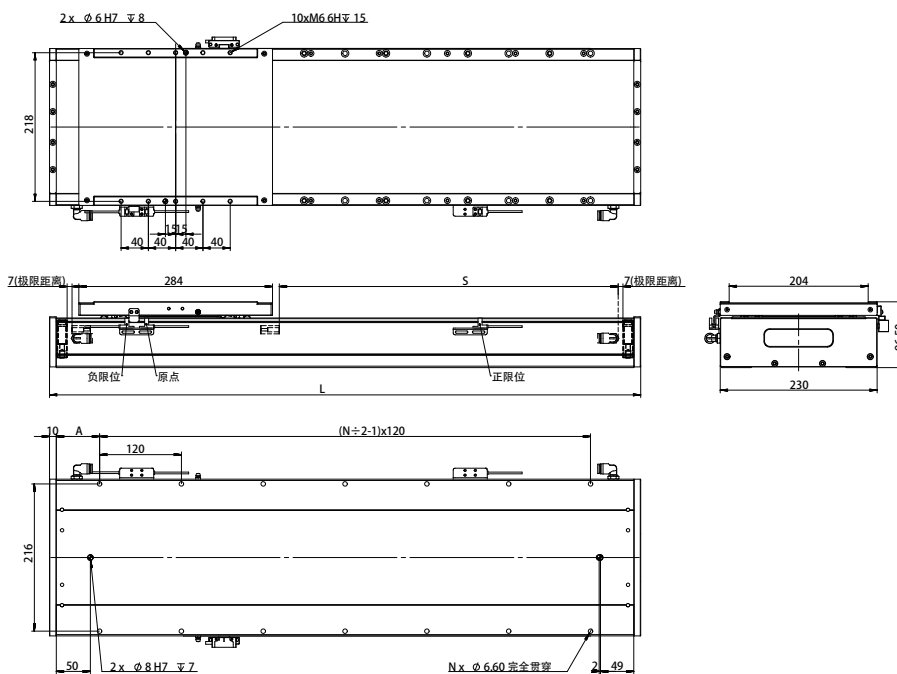
Eff. Stroke: S	1035	1085	1135	1185	1235	1285	1335	1385	1435	1485	1485	1585	1635	1685	1735	1785	1835	1885	1935	1985
Mech. Stroke: S + All.	1049	1099	1149	1199	1249	1299	1349	1399	1449	1499	1499	1599	1649	1699	1749	1799	1849	1899	1949	1999
Total Length: L	1405	1455	1505	1555	1605	1655	1705	1755	1805	1855	1855	1955	2005	2055	2105	2155	2205	2255	2305	2355
No. of Holes: N	24	24	26	26	28	28	28	30	30	32	32	32	34	34	36	36	38	38	38	40
Hole to End: A	32.5	57.5	22.5	47.5	12.5	37.5	62.5	27.5	52.5	17.5	17.5	67.5	32.5	57.5	22.5	47.5	12.5	37.5	62.5	27.5
Mod. Wt. (kg)	44.1	45.4	46.7	48	49.3	50.6	51.9	53.2	54.5	55.8	55.8	58.4	59.7	61	62.3	63.6	64.9	65.2	66.5	67.8
Comp. Wt. (kg)	6.3																			

This diagram is for reference only. Actual dimensions are based on the provided 2D/3D drawings. Product style, appearance, and specifications are subject to change without prior notice.

TSLM230-TICA125-2

TSLM230-TICA125-2

Unit:mm



Eff. Stroke: S	47	97	147	197	247	297	347	397	447	497	547	597	647	697	747	797	847	897	947	997
Mech. Stroke: S + All.	61	111	161	211	261	311	361	411	461	511	561	611	661	711	761	811	861	911	961	1011
Total Length: L	417	467	517	567	617	667	717	767	817	867	917	967	1017	1067	1117	1167	1217	1267	1317	1367
No. of Holes: N	8	8	8	10	10	12	12	14	14	14	16	16	18	18	18	20	20	22	22	24
Hole to End: A	18.5	43.5	68.5	33.5	58.5	33.5	48.5	13.5	38.5	63.5	28.5	53.5	18.5	43.5	68.5	33.5	58.5	33.5	48.5	13.5
Mod. Wt. (kg)	19.4	20.8	22.2	23.6	25	26.4	27.8	29.2	30.6	32	33.4	34.8	36.2	37.6	39	40.4	41.8	43.2	44.6	46
Comp. Wt. (kg)	8.6																			

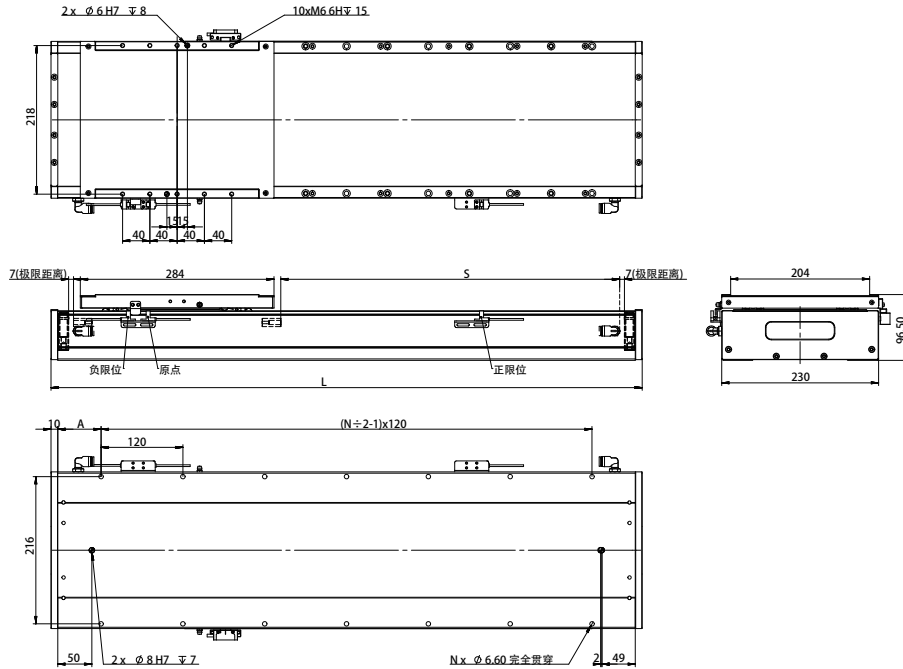
Eff. Stroke: S	1047	1097	1147	1197	1247	1297	1347	1397	1447	1497	1547	1597	1647	1697	1747	1797	1847	1897	1947	1997
Mech. Stroke: S + All.	1061	1111	1161	1211	1261	1311	1361	1411	1461	1511	1561	1611	1661	1711	1761	1811	1861	1911	1961	2011
Total Length: L	1417	1467	1517	1567	1617	1667	1717	1767	1817	1867	1917	1967	2017	2067	2117	2167	2217	2267	2317	2367
No. of Holes: N	24	24	26	26	28	28	28	30	30	32	32	34	34	34	36	36	38	38	38	40
Hole to End: A	38.5	63.5	28.5	53.5	18.5	43.5	68.5	33.5	58.5	33.5	48.5	13.5	38.5	63.5	28.5	53.5	18.5	43.5	68.5	33.5
Mod. Wt. (kg)	47.4	48.8	50.2	51.6	53	54.4	55.8	57.2	58.6	60	61.4	62.8	64.2	65.6	67	68.4	69.8	71.2	72.6	74
Comp. Wt. (kg)	8.6																			

This diagram is for reference only. Actual dimensions are based on the provided 2D/3D drawings. Product style, appearance, and specifications are subject to change without prior notice.

TSLM230-TICA125-3

TSLM230-TICA125-3

Unit:mm



Eff. Stroke: S	10	60	110	160	210	260	310	360	410	460	510	560	610	660	710	760	810	860	910	960
Mech. Stroke: S + All.	24	74	124	174	224	274	324	374	424	474	524	574	624	674	724	774	824	874	924	974
Total Length: L	380	430	480	530	580	630	680	730	780	830	880	930	980	1030	1080	1130	1180	1230	1280	1330
No. of Holes: N	6	8	8	10	10	10	12	12	14	14	16	16	16	18	18	20	20	20	22	22
Hole to End: A	60	25	50	15	40	65	30	55	20	45	10	35	60	25	50	15	40	65	30	55
Mod. Wt. (kg)	20.7	22.1	23.5	24.9	26.3	27.7	29.1	30.5	31.9	33.3	34.7	36.1	37.5	38.9	40.3	41.7	43.1	44.5	45.9	47.3
Comp. Wt. (kg)	10.2																			

Eff. Stroke: S	1010	1060	1110	1160	1210	1260	1310	1360	1410	1460	1510	1560	1610	1660	1710	1760	1810	1860	1910	1960
Mech. Stroke: S + All.	1024	1074	1124	1174	1224	1274	1324	1374	1424	1474	1524	1574	1624	1674	1724	1774	1824	1874	1924	1974
Total Length: L	1380	1430	1480	1530	1580	1630	1680	1730	1780	1830	1880	1930	1980	2030	2080	2130	2180	2230	2280	2330
No. of Holes: N	24	24	26	26	26	28	28	30	30	30	32	32	34	34	36	36	36	38	38	40
Hole to End: A	20	45	10	35	60	25	50	15	40	65	30	55	20	45	10	35	60	25	50	15
Mod. Wt. (kg)	48.7	50.1	51.5	52.9	54.3	55.7	57.1	58.5	59.9	61.3	62.7	64.1	65.5	66.9	68.3	69.7	71.1	72.5	73.9	75.3
Comp. Wt. (kg)	10.2																			

This diagram is for reference only. Actual dimensions are based on the provided 2D/3D drawings. Product style, appearance, and specifications are subject to change without prior notice.