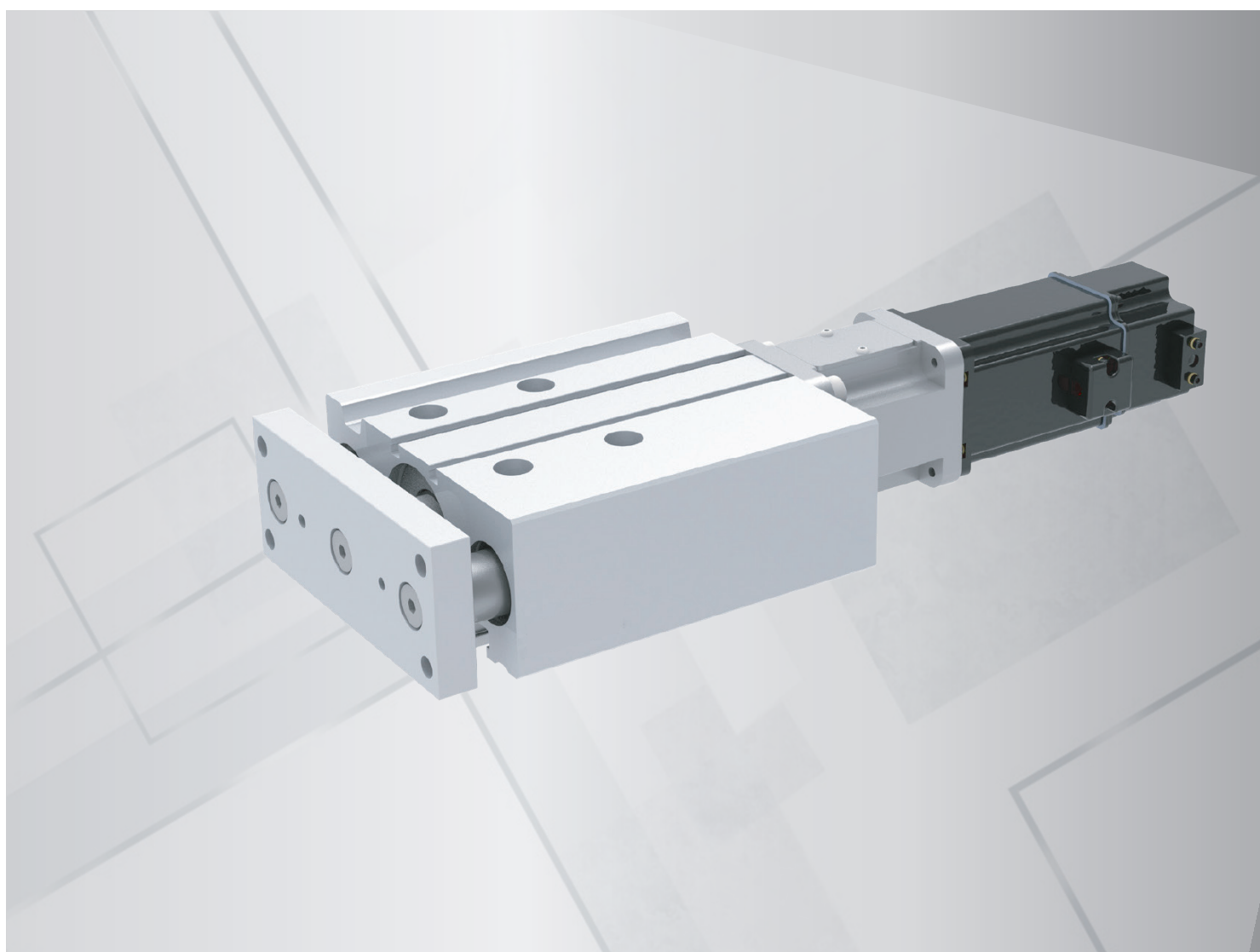


LG series



LG high rigidity guide bar type electric slide table

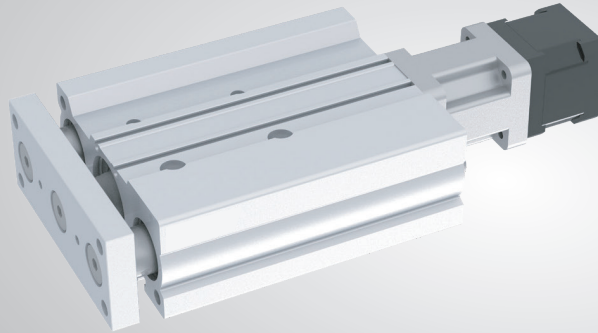


LG16 High rigidity guide bar type electric slide table

Width **83mm**

Max.stroke **100mm**

Max.payload **5kg**



LG Series

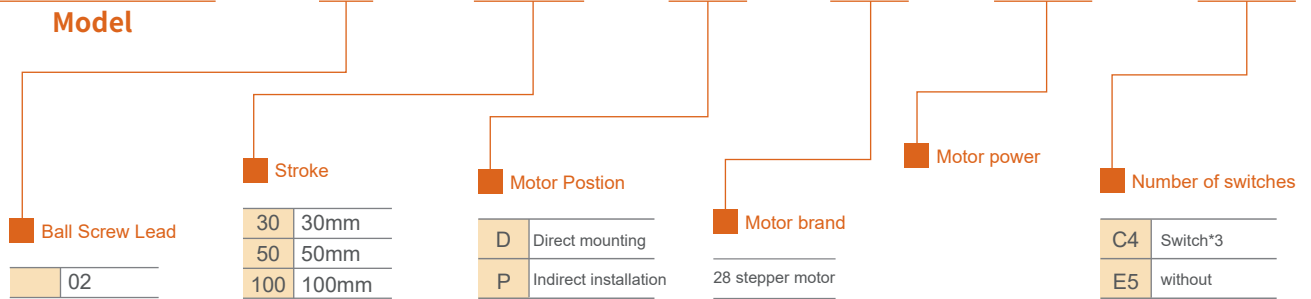
LH Series

LC Series

LE Series

LG16 - L2 - 50 - D - S - 28 - C4

Model

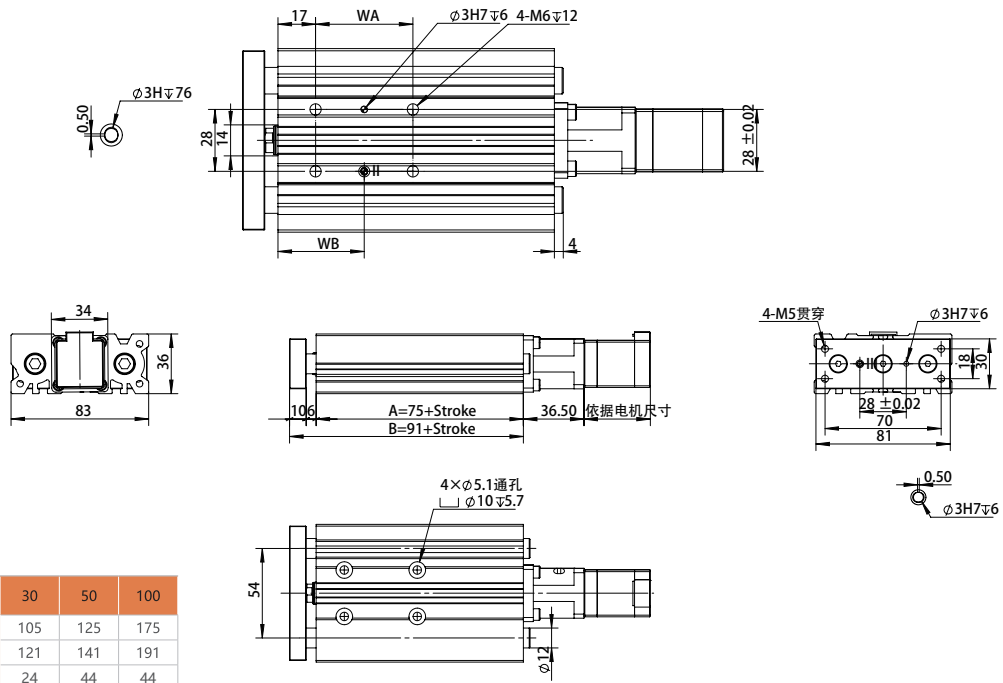


Product parameter

Standard motor output(w)	28 stepper motor	
Static loading Moment(Nm)	0.09	
Repeatability(mm)	±0.02	
Screw specification	0802	
Maximum thrust(N)	220	
Maximum speed(mm/s)	40	
Stroke(mm)	30.50.100	
Max. payload(KG)	Horizontal(kg)	5
	Vertical(kg)	5
Piston rod rotation Angle	±0.7 °	
Stroke weight(KG)	1.2	
Weight increase per 10mm cylinder body(KG)	0.09	
Motor directly mounting related component mass(KG)	0.08	
Motors indirectly mount related component quality(KG)	0.15	

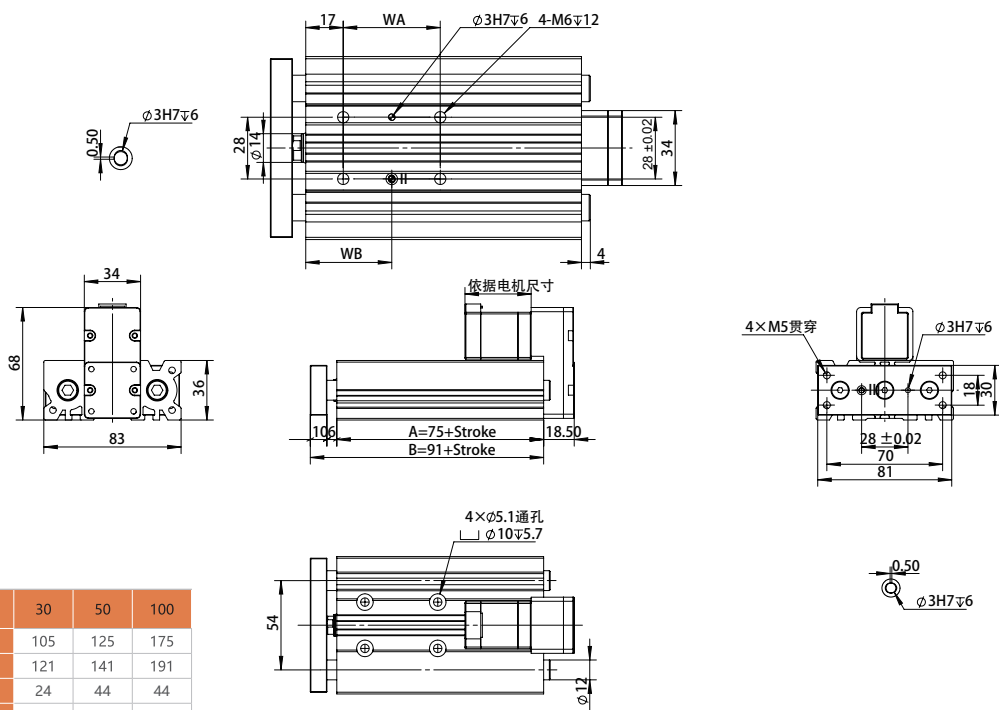
LG16-D

Unit:mm



LG16-P

Unit:mm



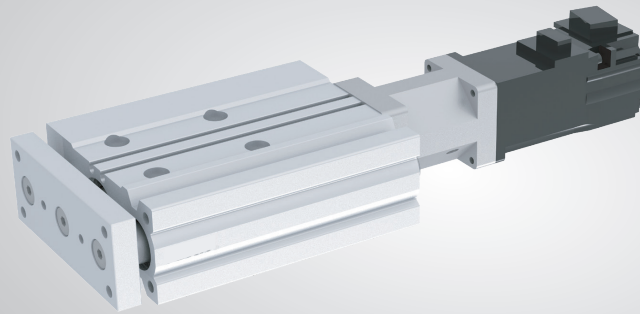
All images in this manual are for reference purposes only. The actual dimensions are subject to the provided 2D or 3D drawings. Product appearance and specifications are subject to change without prior notice.

LG20 High rigidity guide bar type electric slide table

Width **93mm**

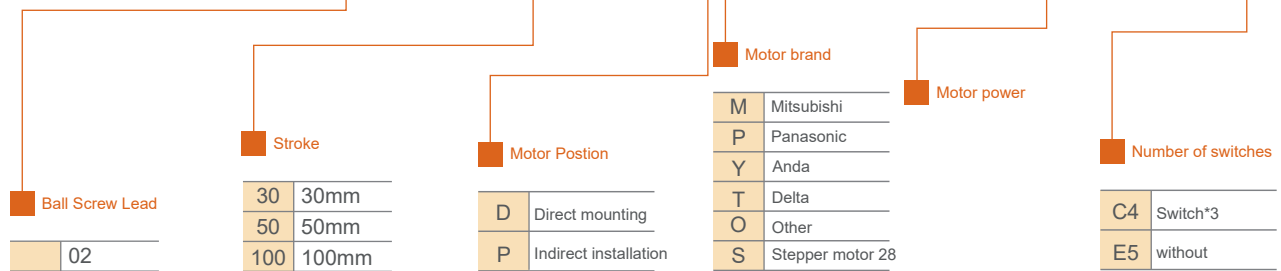
Max.stroke **100mm**

Max.payload **8kg**



LG20 - L2 - 50 - D - S - 28 - C4

MODEL



Product parameter

Standard motor output(w)	50W	stepper motor 28
Static loading Moment(Nm)	0.16	0.09
Repeatability(mm)	±0.02	
Screw specification	0802	
Maximum thrust(N)	400	220
Maximum speed(mm/s)	100	40
Stroke(mm)	30.50.100	
Max. payload(KG)	Horizontal(kg)	8
	Vertical(kg)	8
Piston rod rotation Angle	±0.7°	
Stroke weight(KG)	1.9	
Weight increase per 10mm cylinder body(KG)	0.13	
Motor directly mounting related component mass(KG)	0.14	
Motors indirectly mount related component quality(KG)	0.18	

LG Series

LH Series

LC Series

LE Series

LG

LG Series

LH

LH Series

LC

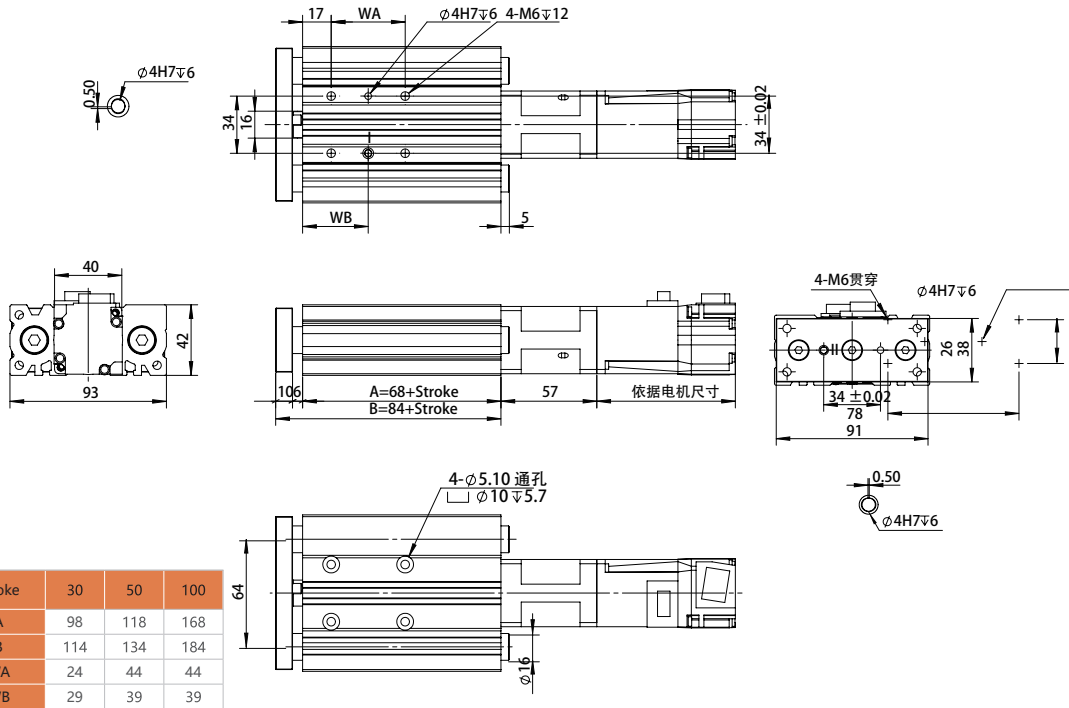
LC Series

LE

LE Series

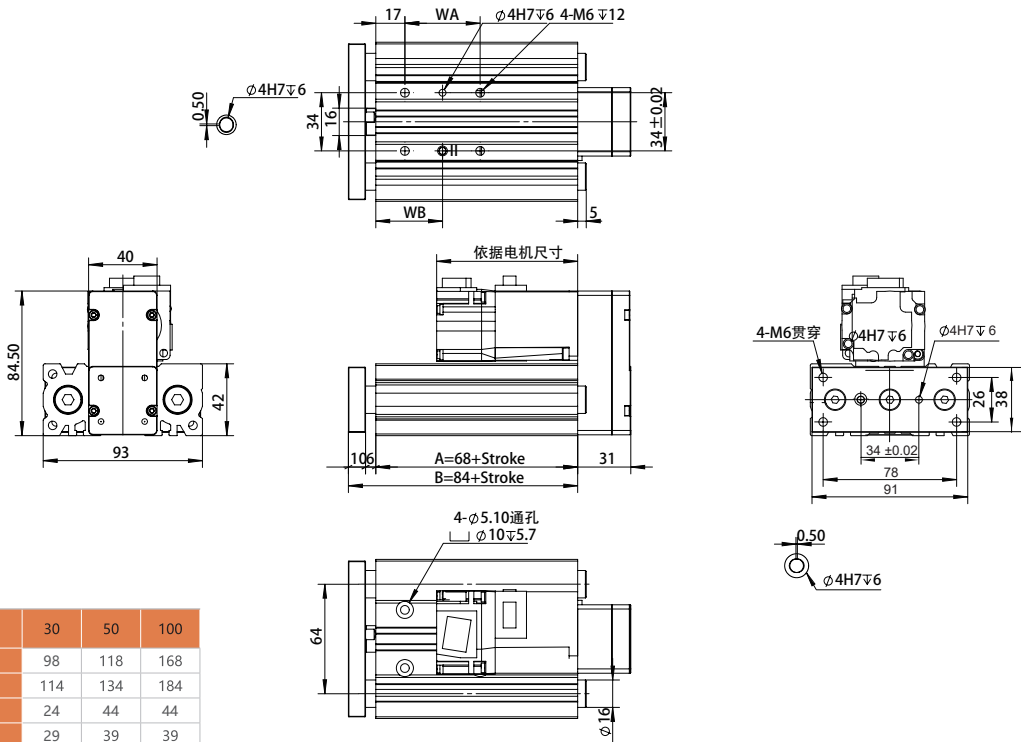
LG20-D

Unit:mm



LG20-P

Unit:mm

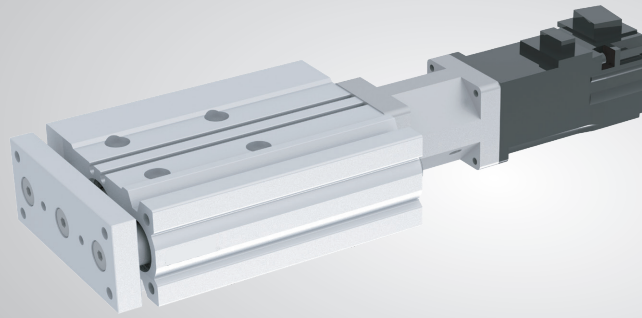


LG25 High rigidity guide bar type electric slide table

Width **112mm**

Max.stroke **100mm**

Max.payload **20kg**



LG Series

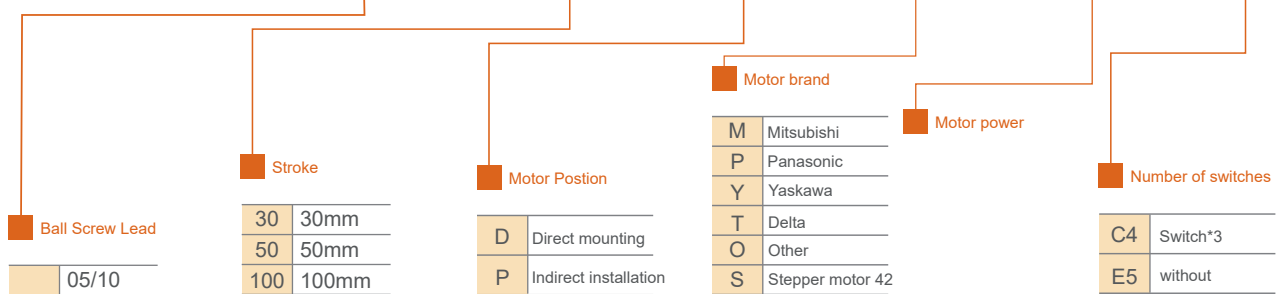
LH Series

LC Series

LE Series

LG25 - L10 - 50 - D - M - 28 - C4

MODEL

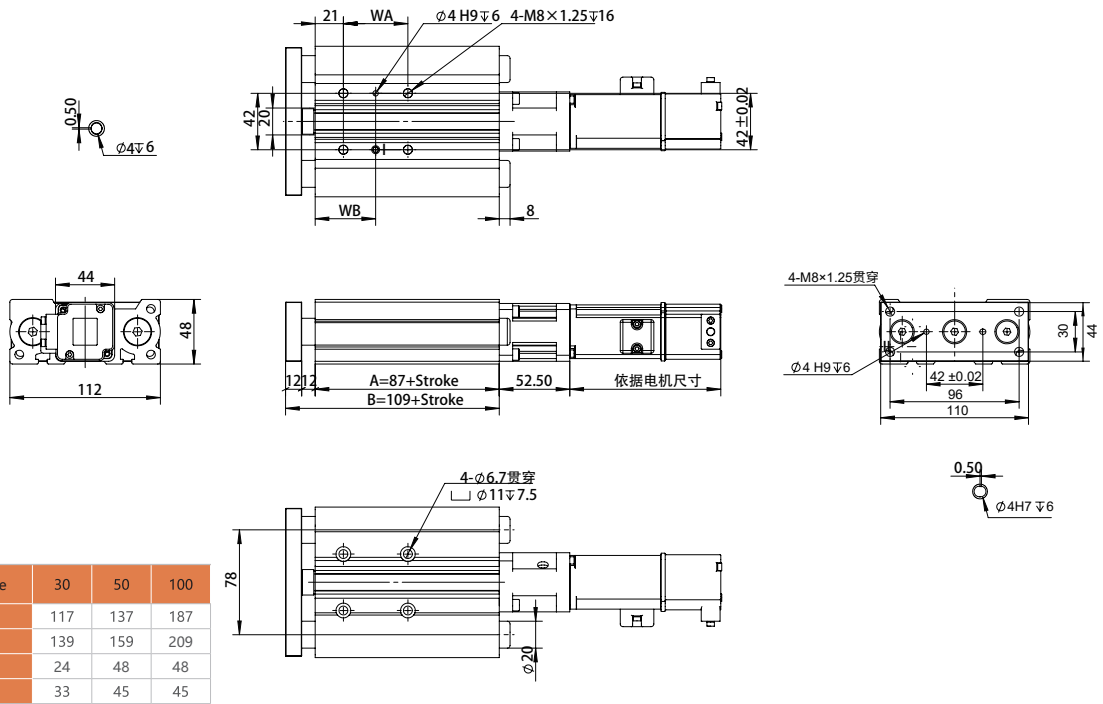


Product parameter

Standard motor output(w)	100W	stepper motor 42	
Static loading Moment(Nm)	0.32	0.25	
Repeatability(mm)	±0.02		
Screw specification	1210	1205	1210 1205
Maximum thrust(N)	170	340	125 250
Maximum speed(mm/s)	500	250	100 50
Stroke(mm)	30.50.100		
Max. payload(KG)	Horizontal(kg)	20	
	Vertical(kg)	24	
Piston rod rotation Angle	±0.7 °		
Stroke weight(KG)	2.1		
Weight increase per 10mm cylinder body(KG)	0.2		
Motor directly mounting related component mass(KG)	0.13		
Motors indirectly mount related component quality(KG)	0.2		

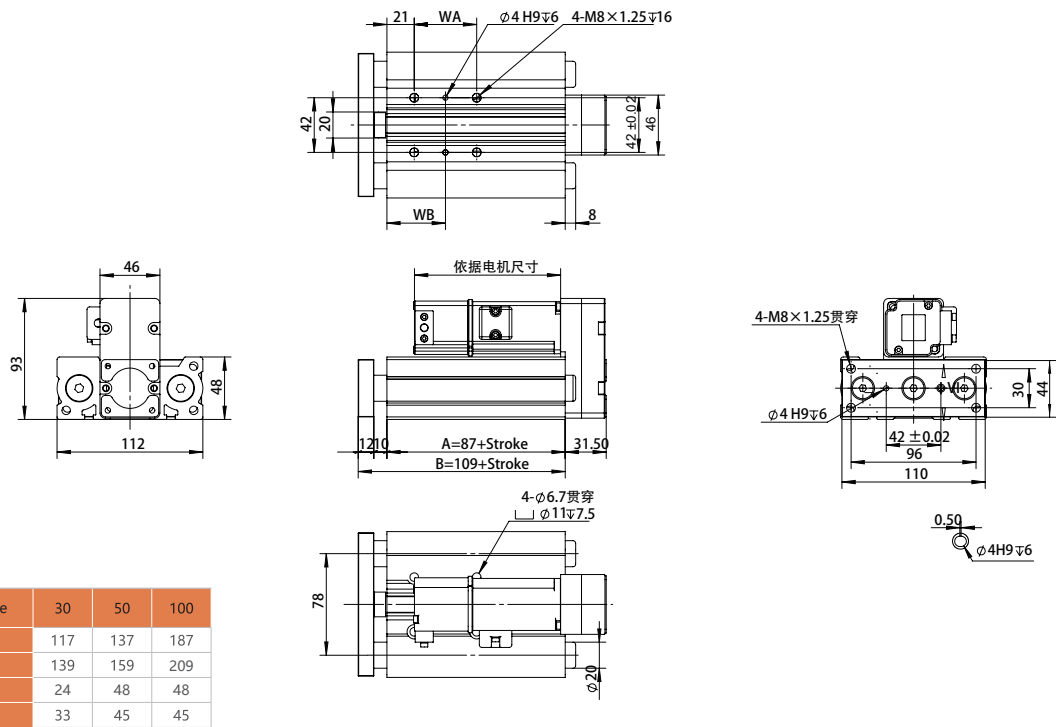
LG25-D

Unit:mm



LG25-P

Unit:mm

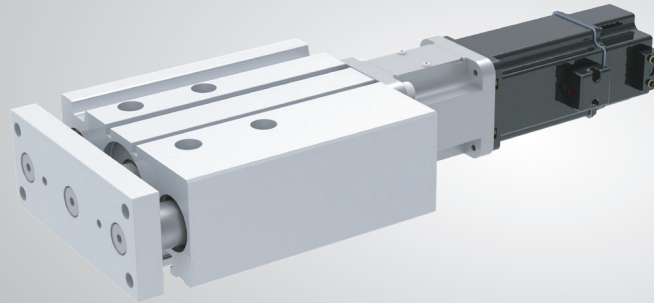


LG32 High rigidity guide bar type electric slide table

Width **148mm**

Max.stroke **100mm**

Max.payload **45kg**



LG Series

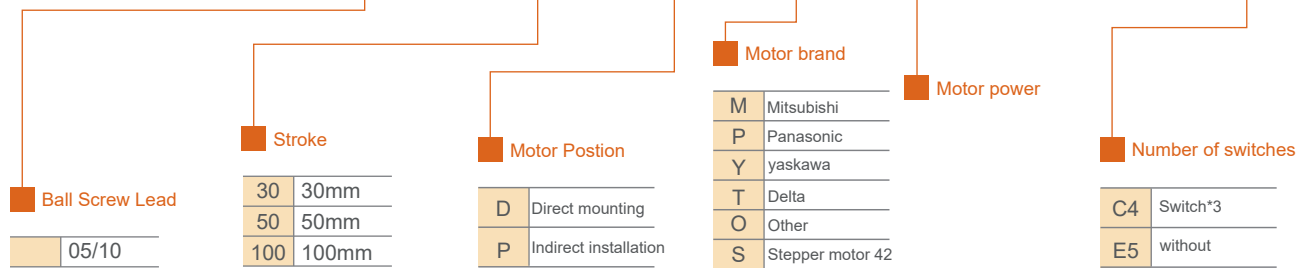
LH Series

LC Series

LE Series

LG32 - L10 - 50 - D - M - 400W - C4

MODEL



Product parameter

Standard motor output(w)	400W	stepper motor 57	
Static loading Moment(Nm)	1.32	0.3	
Repeatability(mm)	±0.02		
Screw specification	1605	1610	1605 1610
Maximum thrust(N)	1280	690	300 150
Maximum speed(mm/s)	250	500	100 200
Stroke(mm)	30.50.100		
Max. payload(KG)	Horizontal(kg)	45	
	Vertical(kg)	27	
Piston rod rotation Angle	±0.7 °		
Stroke weight(KG)	6.1		
Weight increase per 10mm cylinder body(KG)	0.3		
Motor directly mounting related component mass(KG)	0.3		
Motors indirectly mount related component quality(KG)	0.6		

LG

LG Series

LH

LH Series

LC

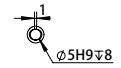
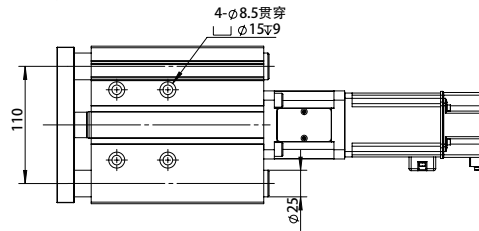
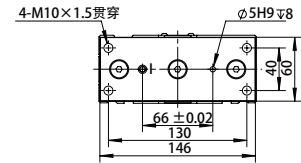
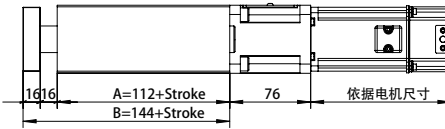
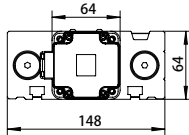
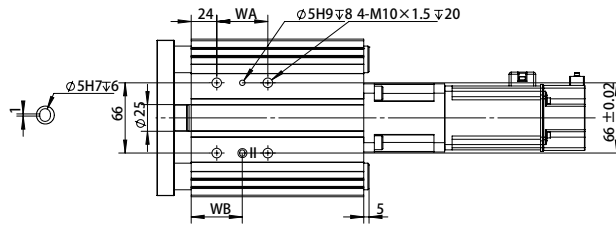
LC Series

LE

LE Series

LG32-D

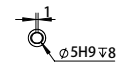
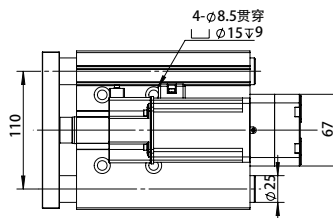
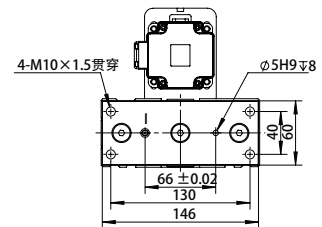
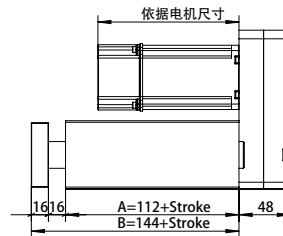
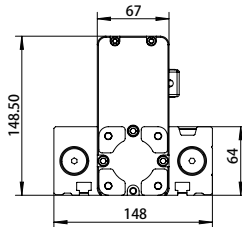
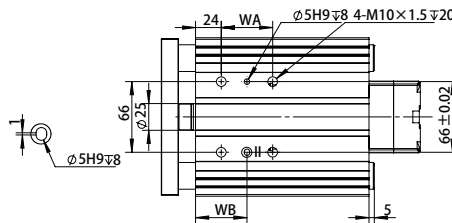
Unit:mm



Stroke	30	50	100
A	142	162	212
B	174	194	244
WA	28	52	52
WB	38	50	50

LG32-P

Unit:mm



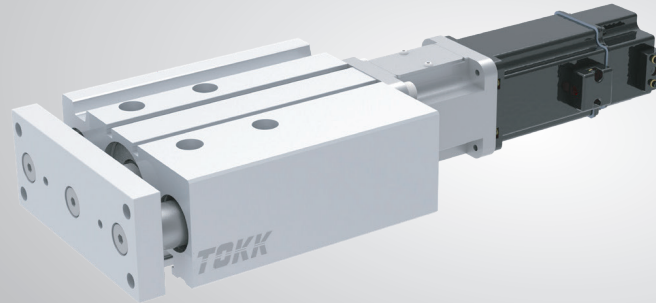
Stroke	30	50	100
A	142	162	212
B	174	194	244
WA	28	52	52
WB	38	50	50

LG40 High rigidity guide bar type electric slide table

Width **162mm**

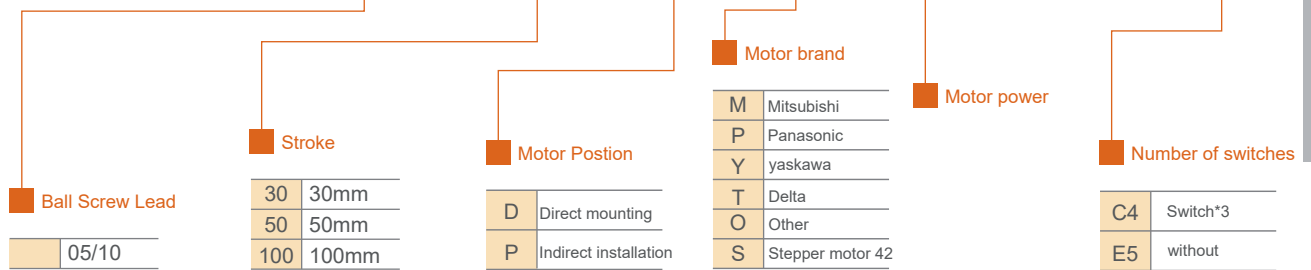
Max.stroke **100mm**

Max.payload **60kg**



LG40 - L10 - 50 - D - T - 400W - C4

MODEL



Ball Screw Lead

05/10

Stroke

30	30mm
50	50mm
100	100mm

Motor Position

D	Direct mounting
P	Indirect installation

Motor brand

M	Mitsubishi
P	Panasonic
Y	yaskawa
T	Delta
O	Other
S	Stepper motor 42

Motor power

400W

Number of switches

C4	Switch*3
E5	without

Product parameter

Standard motor output(w)	400W	Stepper motor 57	
Static loading Moment(Nm)	1.32	0.3	
Repeatability(mm)	±0.02		
Screw specification	1605	1610	1605 1610
Maximum thrust(N)	1280	690	300 150
Maximum speed(mm/s)	250	500	100 200
Stroke(mm)	30.50.100		
Max. payload(KG)	Horizontal(kg)	60	
	Vertical(kg)	27	
Piston rod rotation Angle	±0.7 °		
Stroke weight(KG)	7.3		
Weight increase per 10mm cylinder body(KG)	0.4		
Motor directly mounting related component mass(KG)	0.4		
Motors indirectly mount related component quality(KG)	0.6		

LGSeries LG

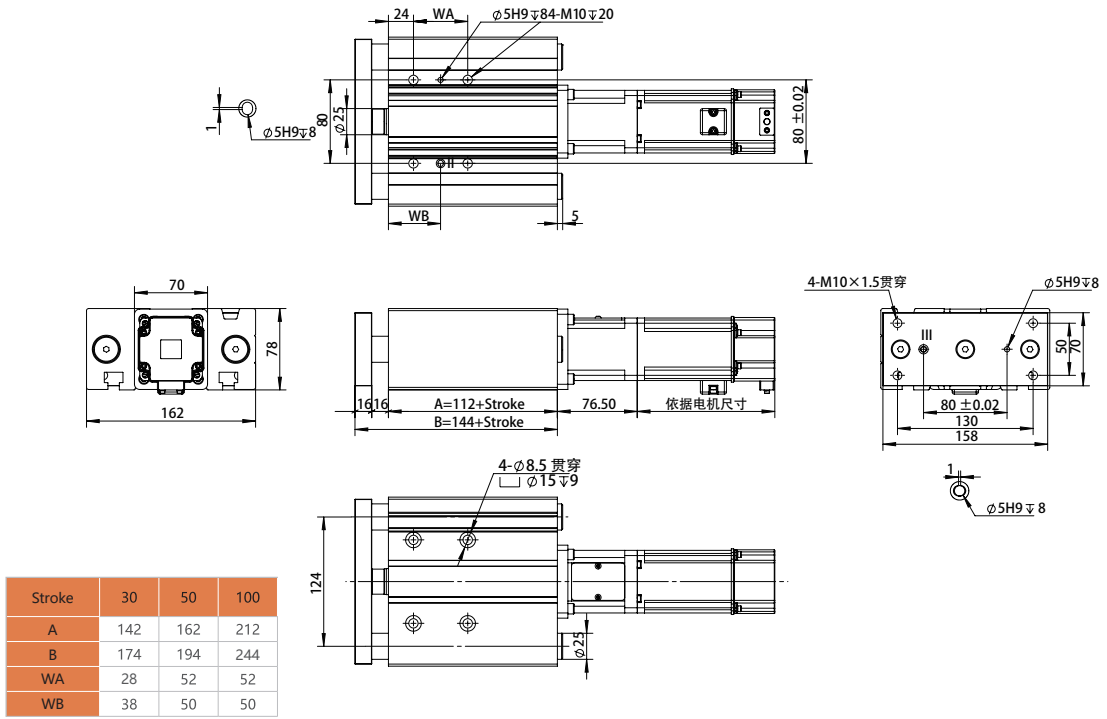
LHSeries LH

LCSeries LC

LESeries LE

LG40-D

Unit:mm



LG40-P

Unit:mm

