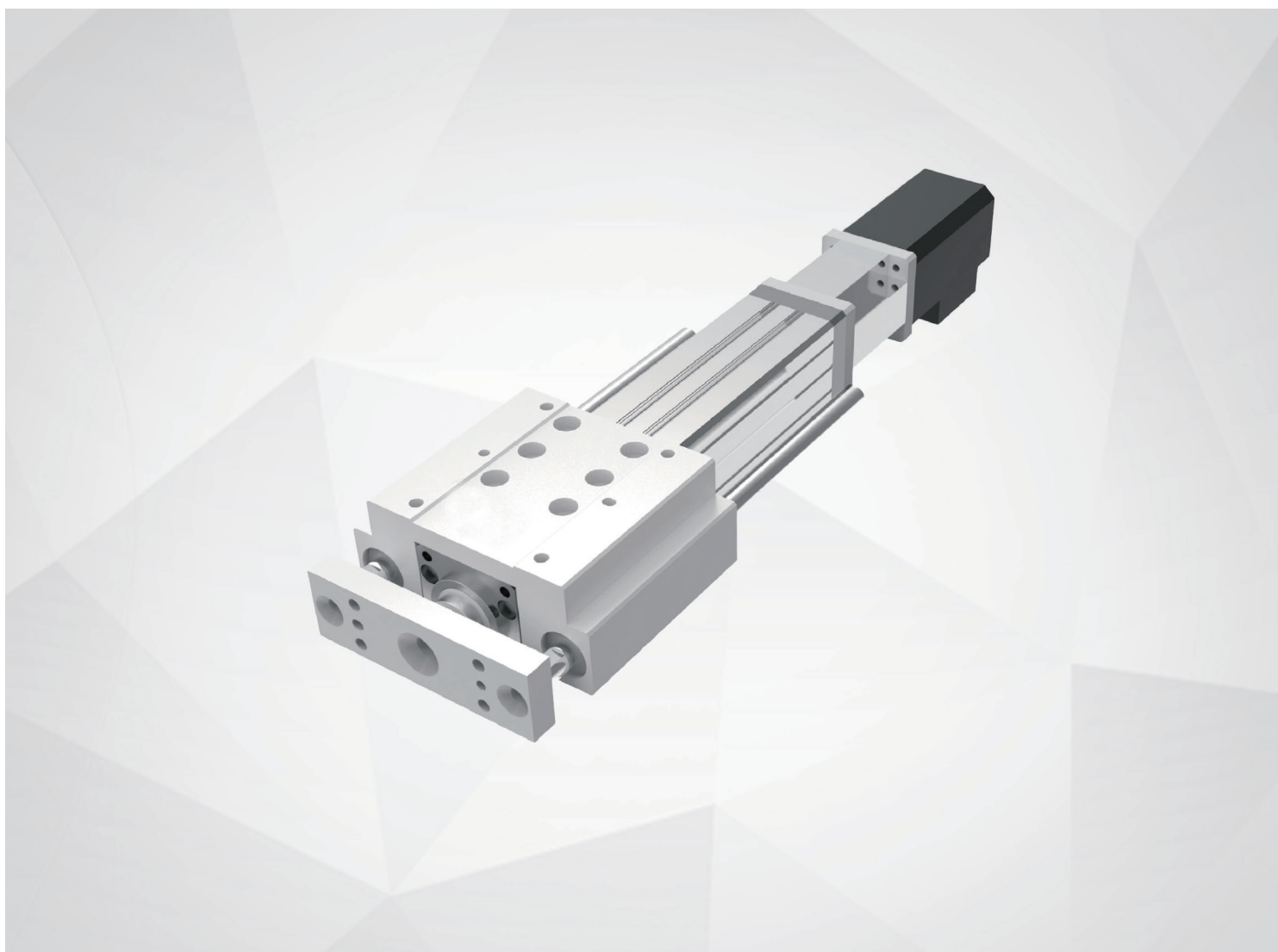


LC series



LC compact electric cylinder

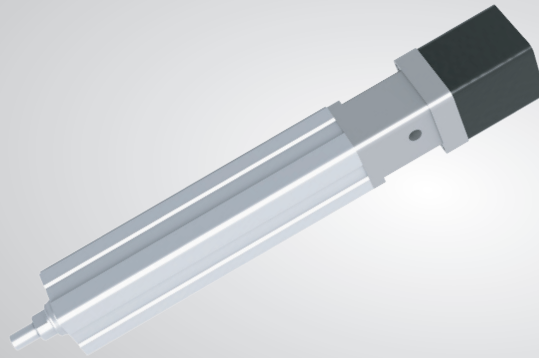


LC12 Compact electric cylinder

 Width
27mm

 Max. stroke
100mm

 Max. thrust
220N



LG Series

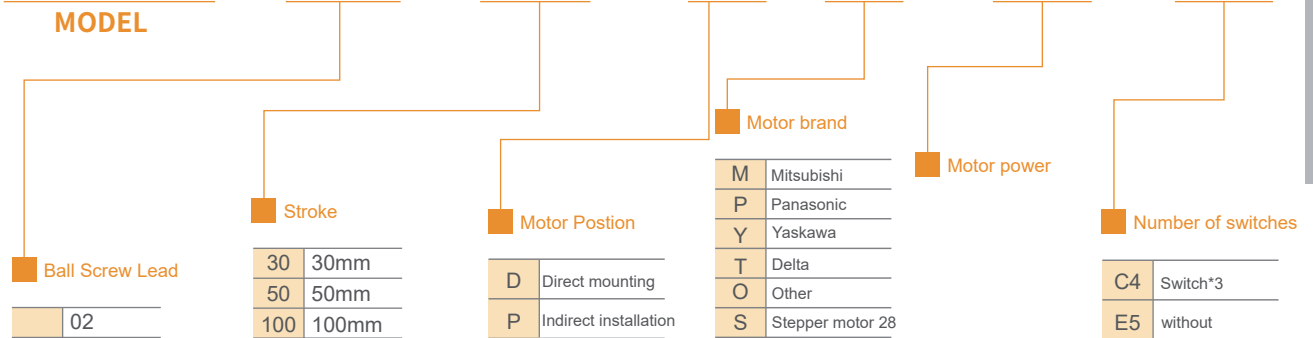
LH Series

LC Series

LE Series

LC12 - L2 - 100 - D - S - 28 - C4

MODEL

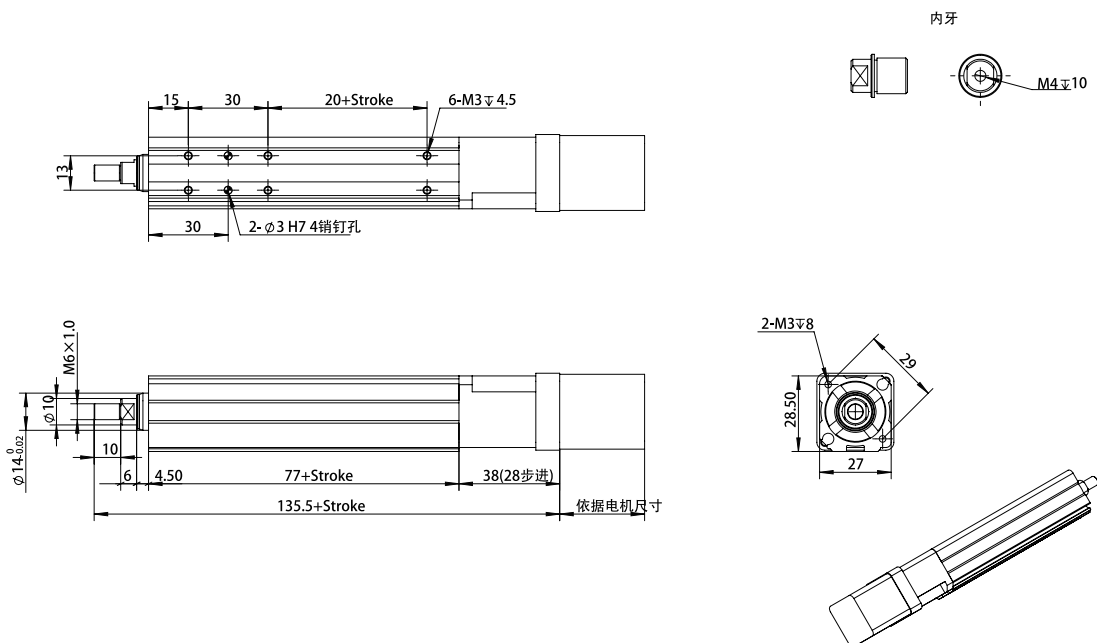


Product parameter

	Stepper motor 28
Standard motor output(w)	
Static loading Moment(Nm)	0.09
Repeatability(mm)	±0.02
Screw specification	0802
Maximum thrust(N)	220
Maximum speed(mm/s)	40
Max.Stroke(mm)	100
Maximum load(Kg)	5
Piston rod rotation Angle	±0.7 °
Maximum driving torque(Nm)	0.5
Basic weight(kg)	0.3
Weight increase per 10mm cylinder body(kg)	0.1

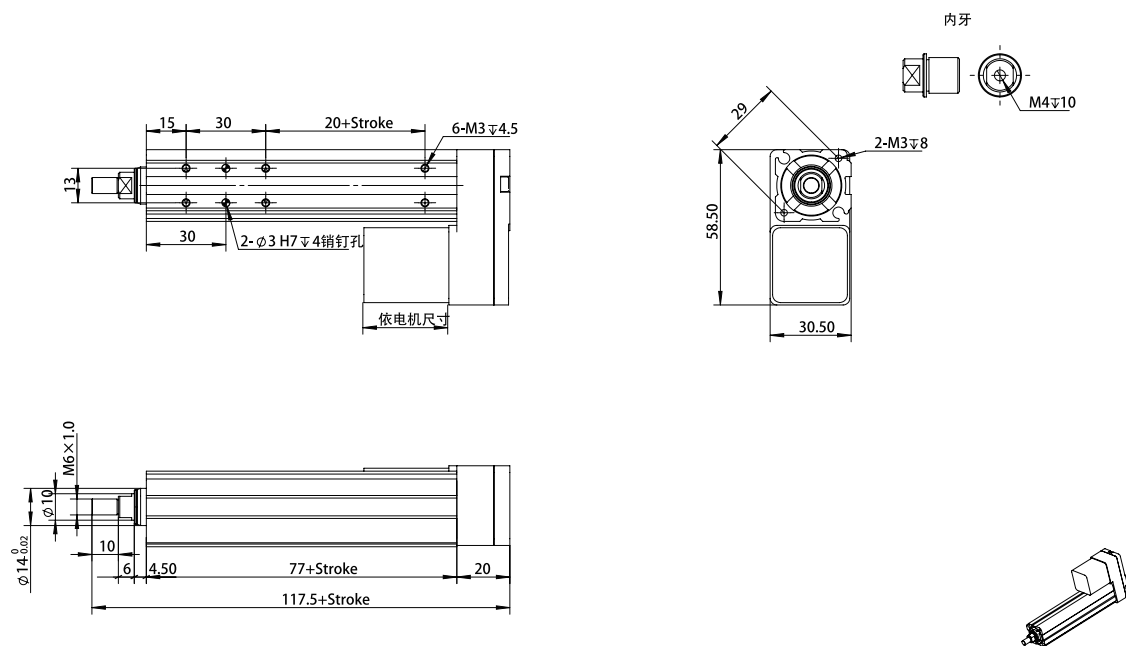
LC12-D

Unit:mm

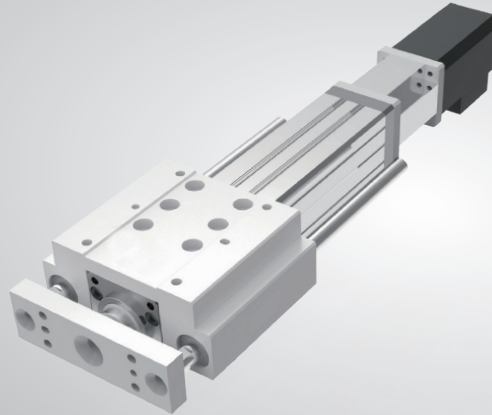


LC12-P

Unit:mm



LC16 Compact electric cylinder

 Width
34mm
 Max. stroke
300mm
 Max. thrust
400N

 LSeries
LG

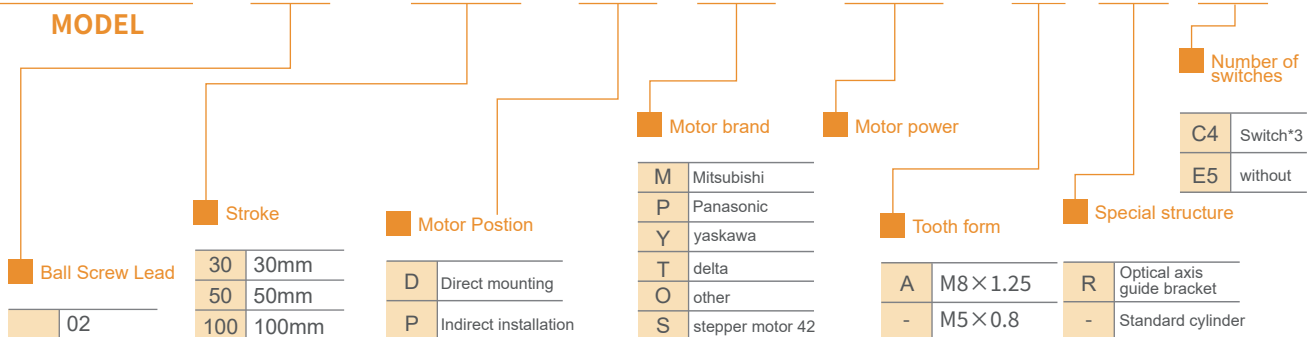
 LSeries
LH

 LSeries
LC

 LSeries
LE

LC16 - L2 - 100 - D - S - 28 - A - R - C4

MODEL

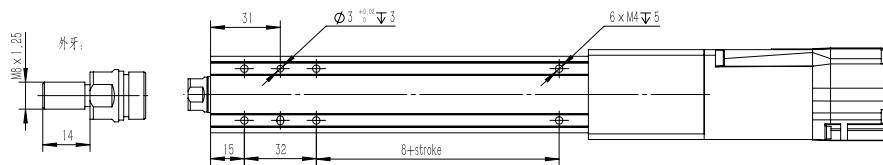


Product parameter

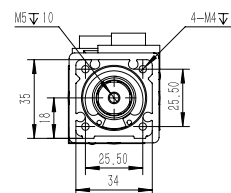
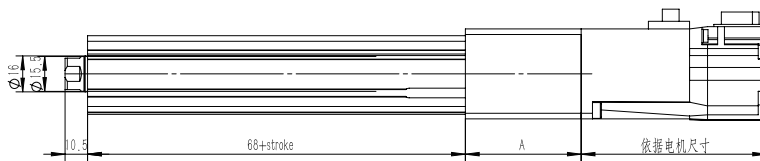
Standard motor output(w)	50W	stepper motor 57
Static loading Moment(Nm)	0.16	0.09
Repeatability(mm)	±0.02	
Screw specification	802	802
Maximum thrust(N)	400	220
Maximum speed(mm/s)	100	40
Max.Stroke(mm)	300	
Maximum load	8	
Piston rod rotation Angle	±0.7 °	
Maximum driving torque	0.5	
Basic weight(KG)	0.248	
Weight increase per 10mm cylinder body(KG)	0.274	

LC16-D

Unit:mm

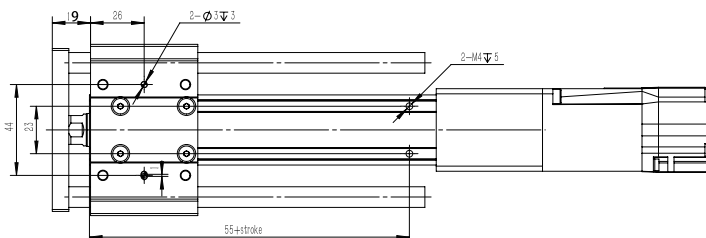


马达	A
50W/100W	51.5
步进28	46.5

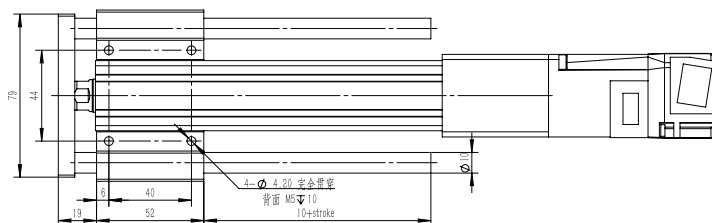
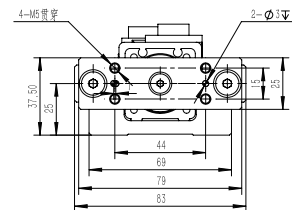
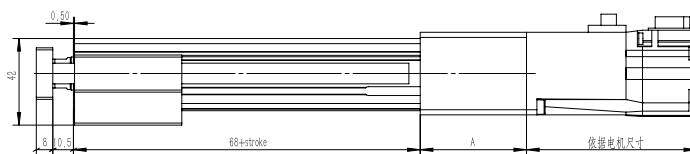


LC16-D-R

Unit:mm

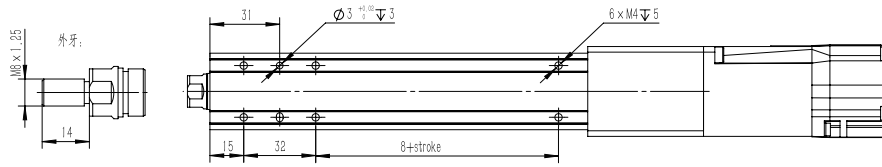


马达	A
50W/100W	51.5
步进28	46.5

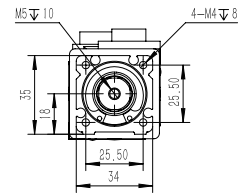
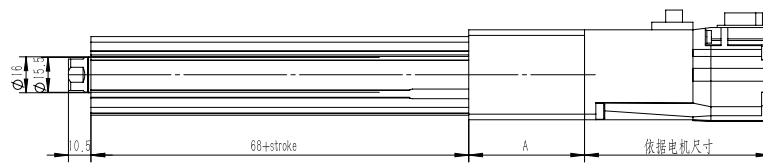


LC16-P

Unit:mm

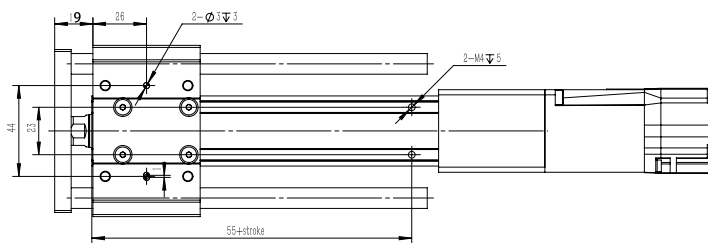


马达	A
50W/100W	51.5
步进28	46.5

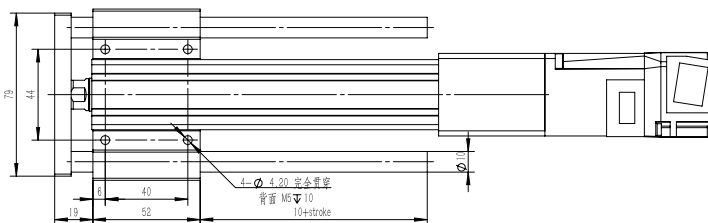
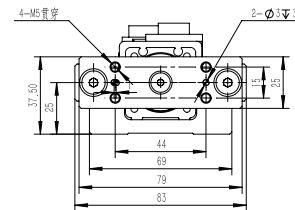
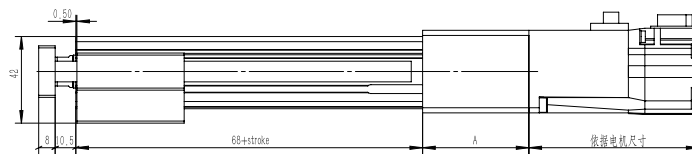


LC16-P-R

Unit:mm



马达	A
50W/100W	51.5
步进28	46.5

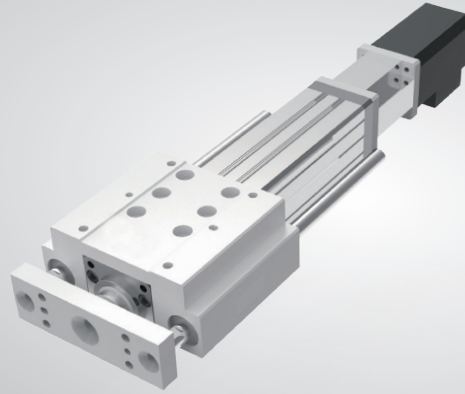


LC25 Compact electric cylinder

Width **44mm**

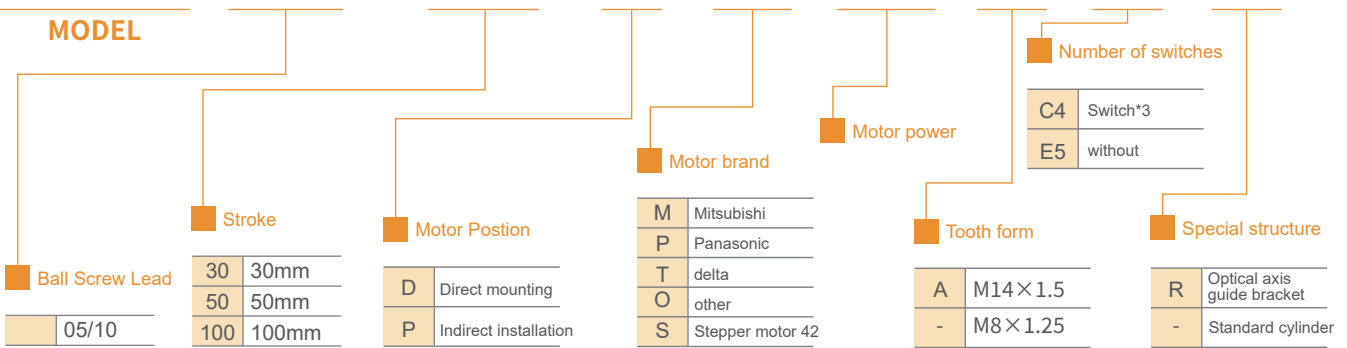
Max.stroke **400mm**

Max.thrust **340N**



LC25 -L10 - 100 - D - S - 42 - A -C4 -R

MODEL

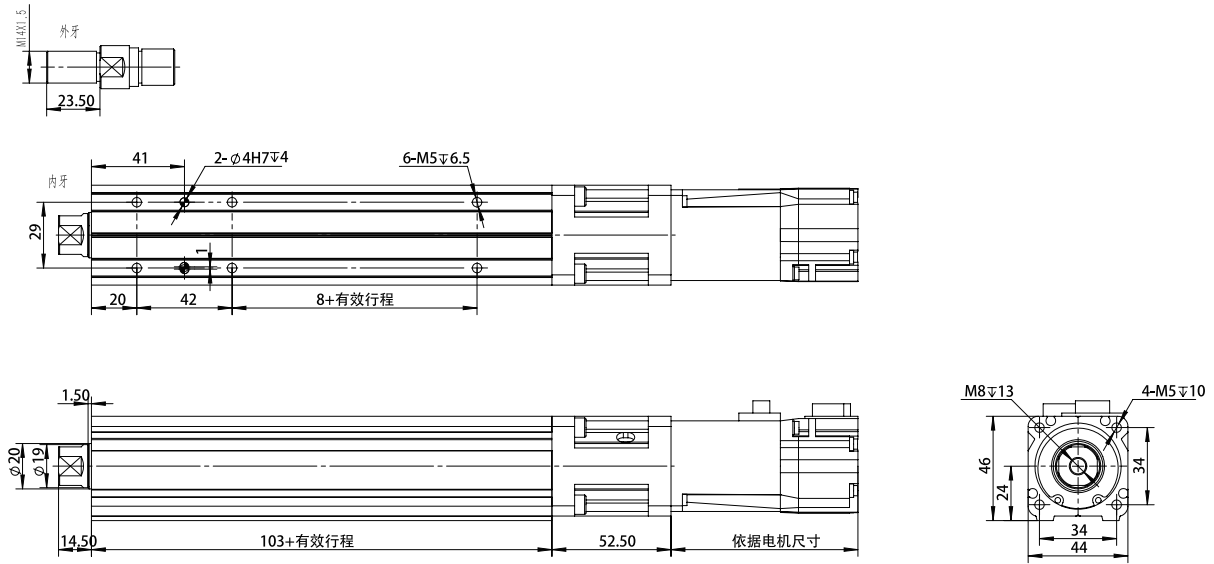


Product parameter

Standard motor output(w)	100W	stepper motor 42	
Static loading Moment(Nm)	0.32	0.25	
Repeatability(mm)	±0.02		
Screw specification	1210	1205	1210 1205
Maximum thrust(N)	170	340	125 250
Maximum speed(mm/s)	500	250	100 50
Max.Stroke(mm)	Standard cylinder: 400 With optical axis guide: 250		
Maximum load	20		
Piston rod rotation Angle	Standard cylinder: ±0.7° With optical axis guide: ±0.06°		
Maximum driving torque	0.8		
Basic weight(KG)	Standard cylinder: 0.587		
Weight increase per 10mm cylinder body(KG)	Standard cylinder: 0.485		

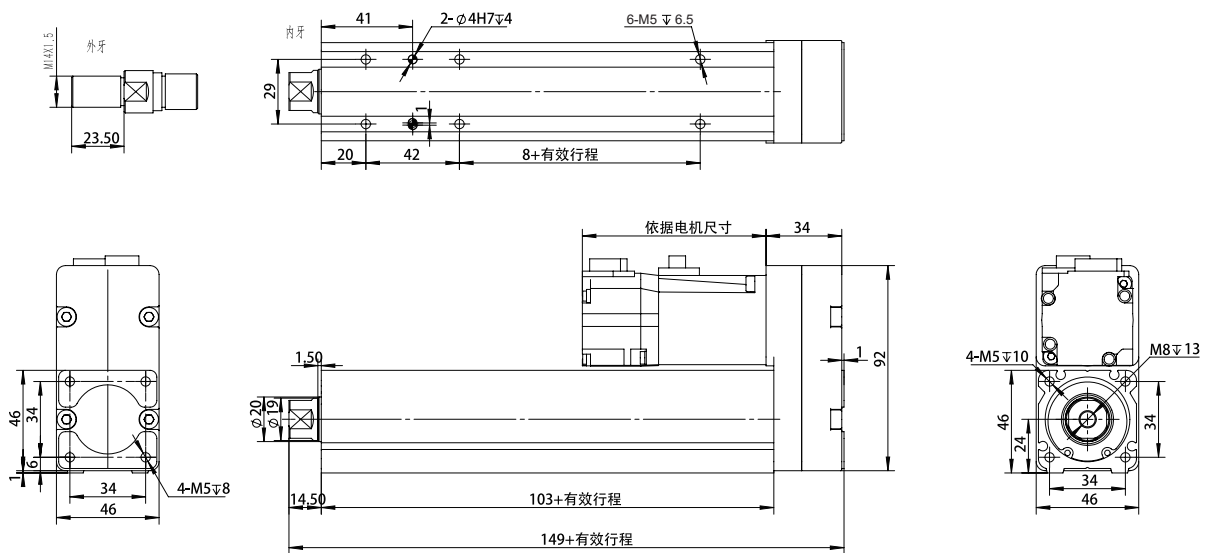
LC25-D

Unit:mm



LC25-D-R

Unit:mm



LG Series

LH Series

LC Series

LE Series

LG Series

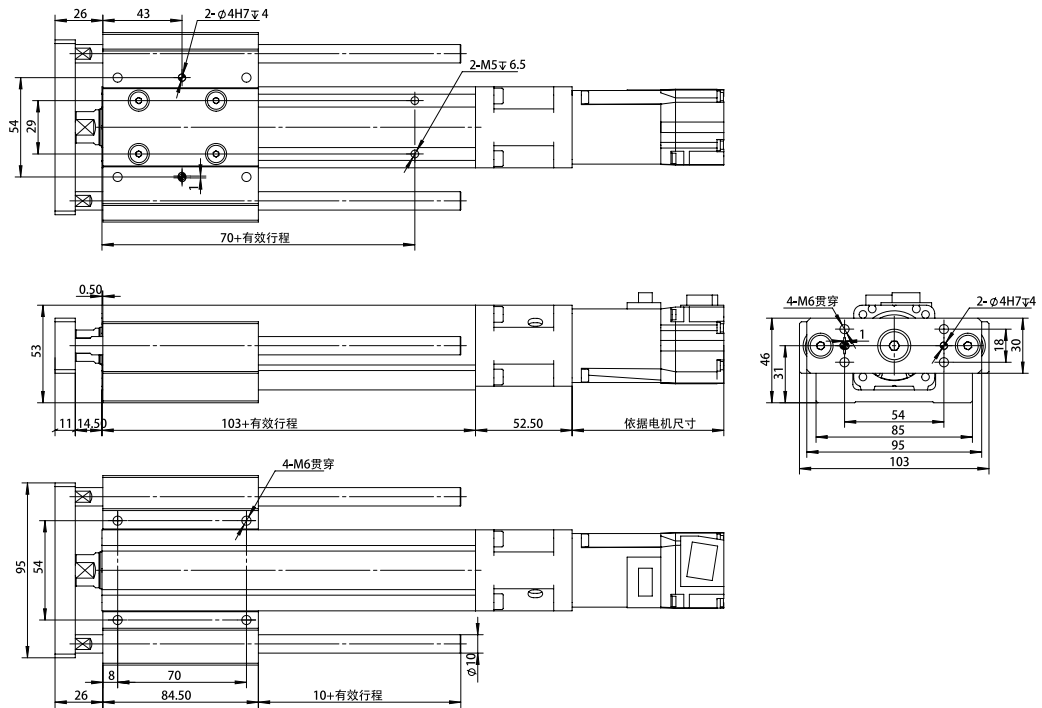
LH Series

LC Series

LE Series

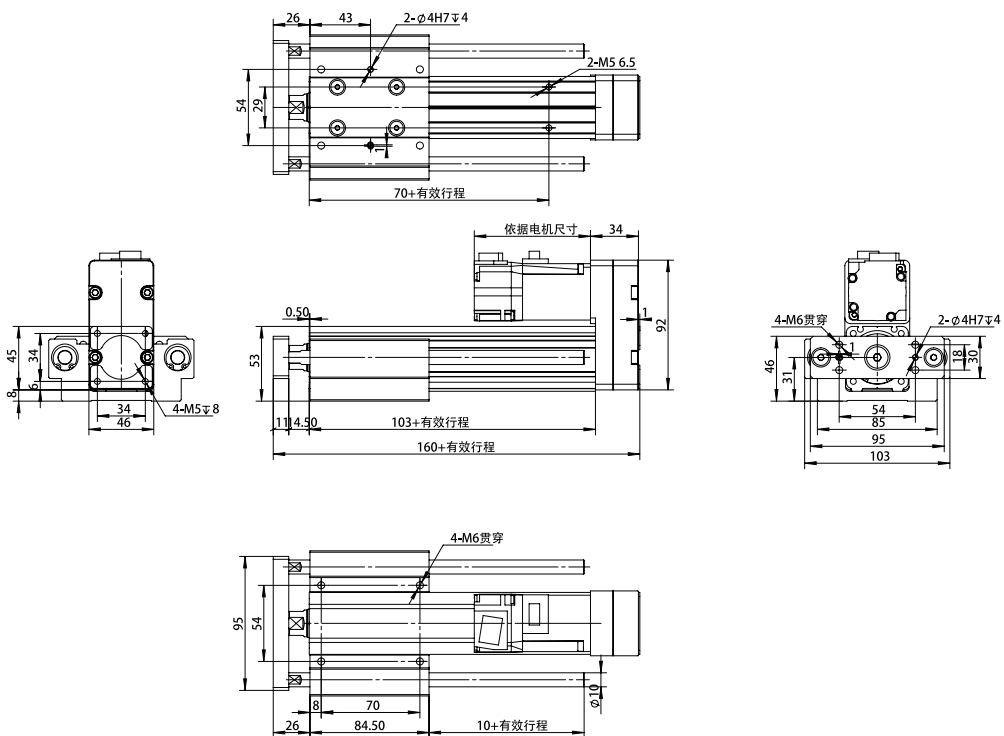
LC25-P

Unit:mm



LC25-P-R

Unit:mm

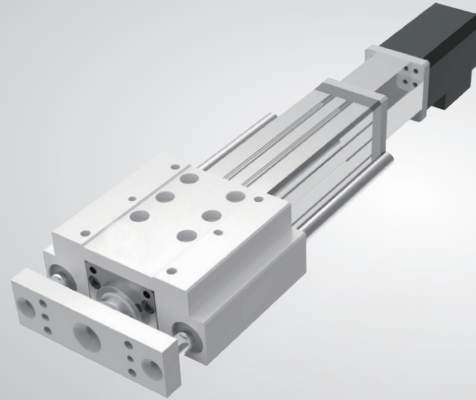


LC32 Compact electric cylinder

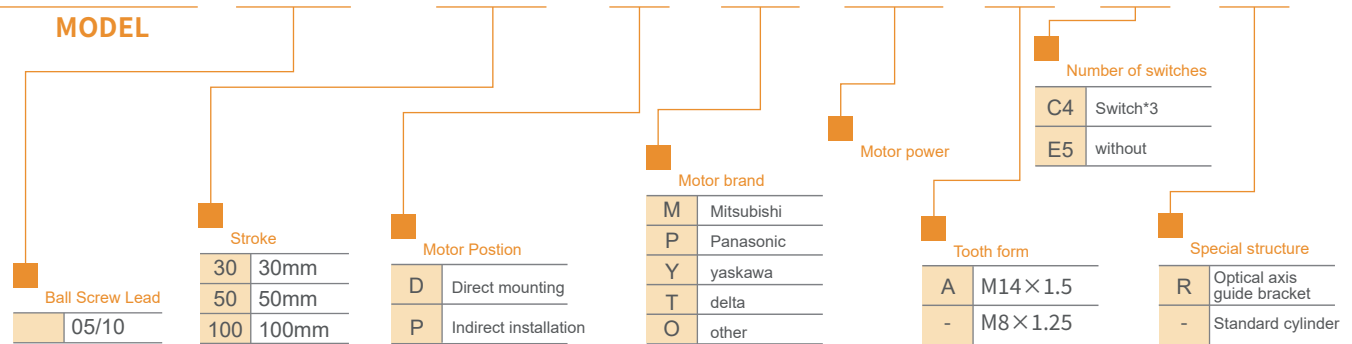
Width **52mm**

Max.stroke **500mm**

Max.thrust **400N**



LC32 - L10 - 100 - D - S - 57 - A - S1 - R



Product parameter

Standard motor output(w)	200W	stepper motor 57	
Static loading Moment(Nm)	0.64	0.3	
Repeatability(mm)	±0.02		
Screw specification	1205	1210	1205 1210
Maximum thrust(N)	690	350	300 150
Maximum speed(mm/s)	250	500	100 200
Max.Stroke(mm)	Standard cylinder: 500 With optical axis guide: 300		
Maximum load	40		
Piston rod rotation Angle	±0.7°		
Maximum driving torque	1.8		
Basic weight(KG)	0.869		
Weight increase per 10mm cylinder body(KG)	0.629		

LG

LH

LC

LE

LG

LG Series

LH

LH Series

LC

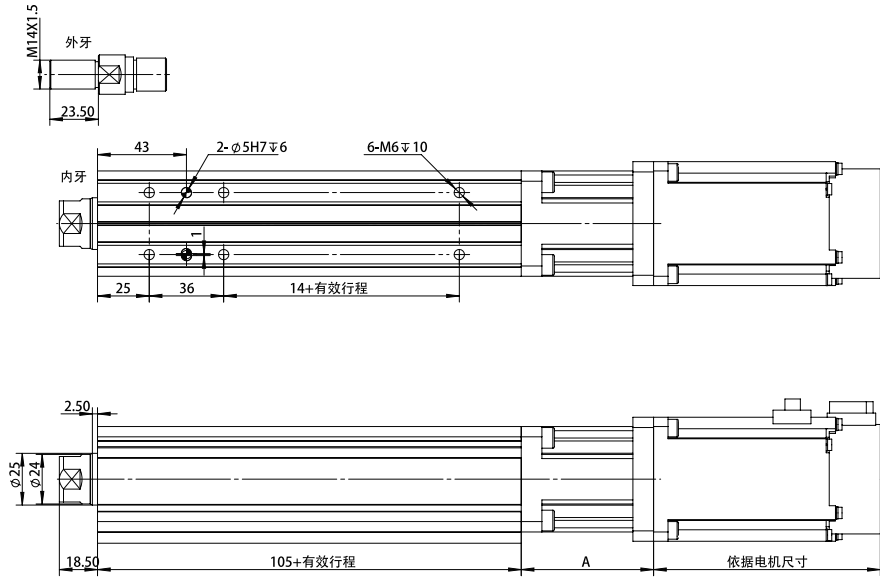
LC Series

LE

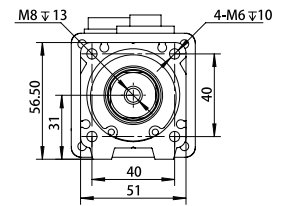
LE Series

LC32-D

Unit:mm

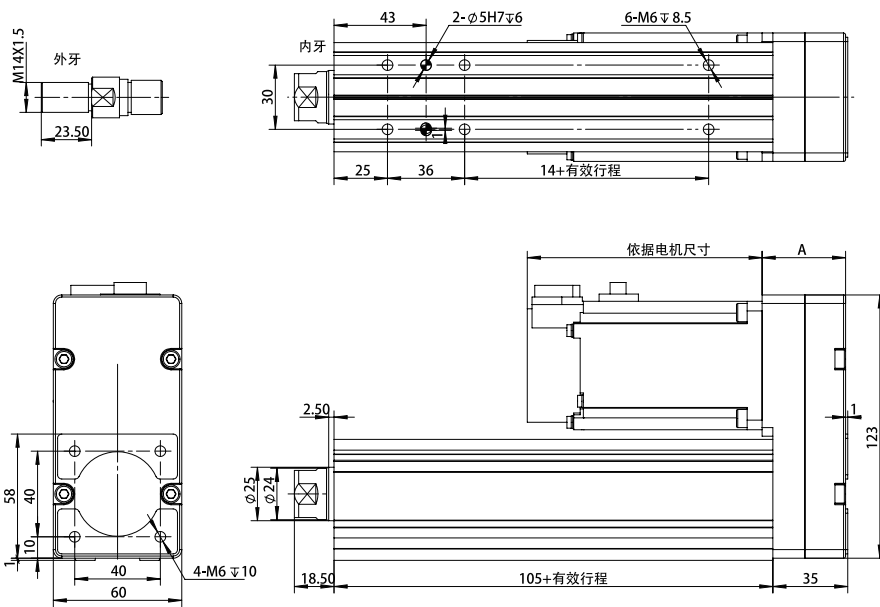


马达	A
200W/400W	64
步进57	55

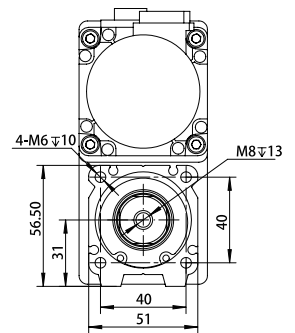


LC32-P

Unit:mm

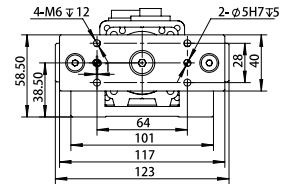
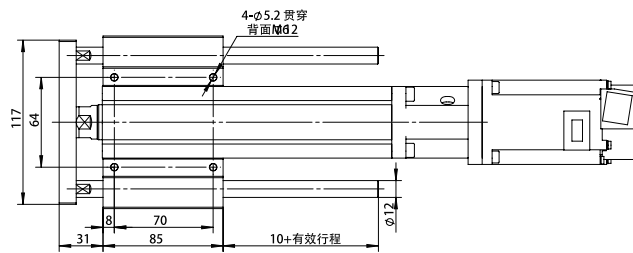
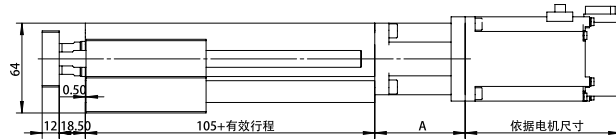
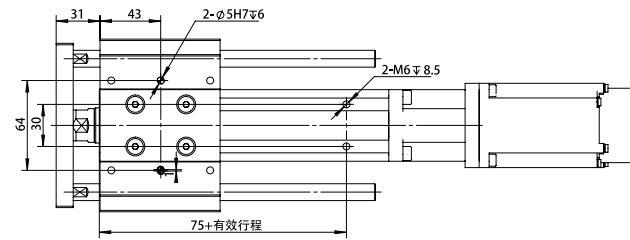


马达	A
200W/400W	39
步进57	36



LC32-D-R

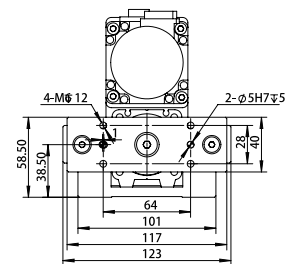
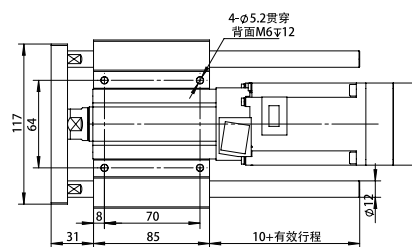
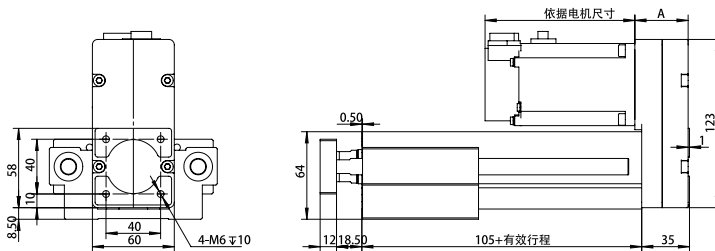
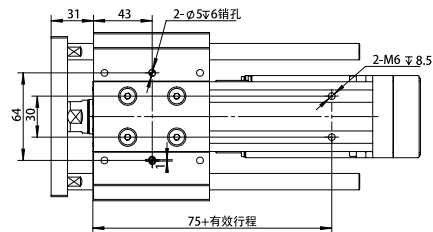
Unit:mm



马达	A
200W/400W	64
步进57	55

LC32-D-R

Unit:mm



马达	A
200W/400W	39
步进57	36

LG Series

LH Series

LC Series

LE Series