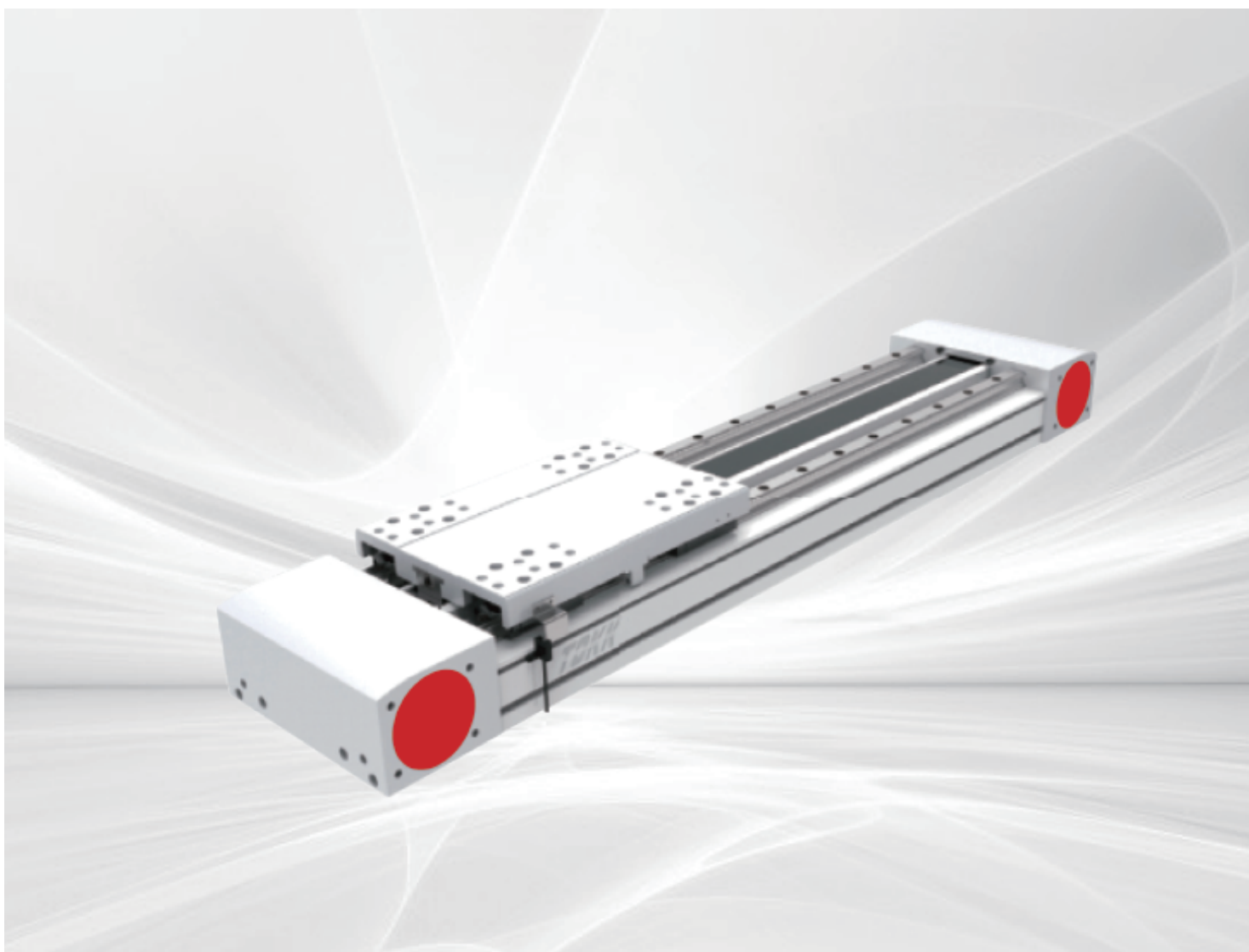


# EGK series

Synchronous Belt type

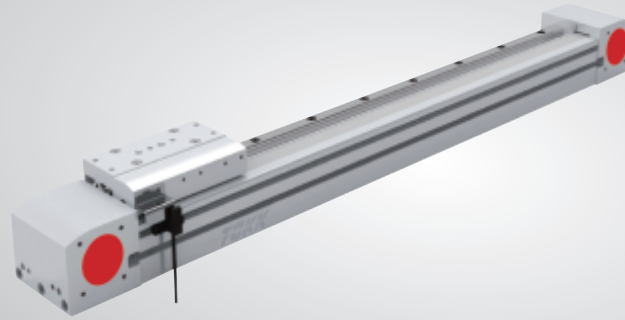


# EGK70

Width  
**69mm**

Max.Stroke  
**5000mm**

Max.Payload  
**15kg**



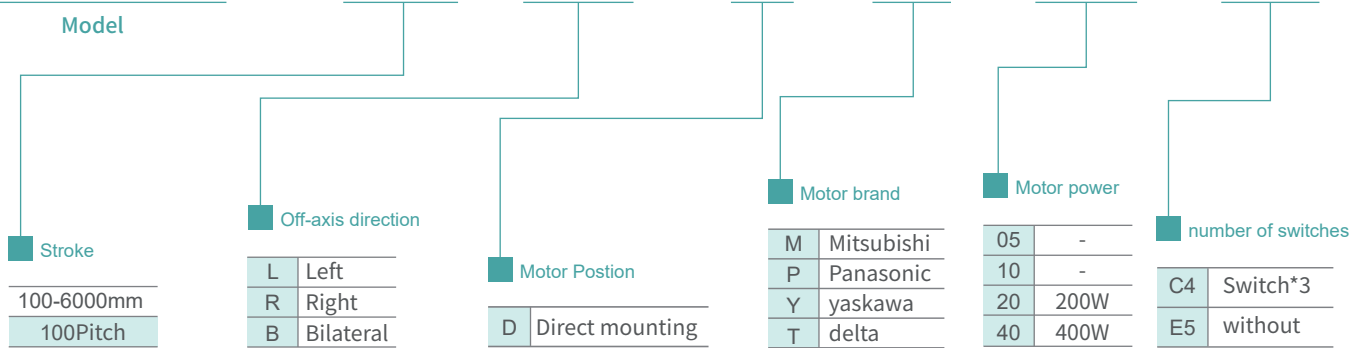
LETB series

LECB series

EGK series

MK series

## EGK70 - 400 - R - D - M - 20 - C4

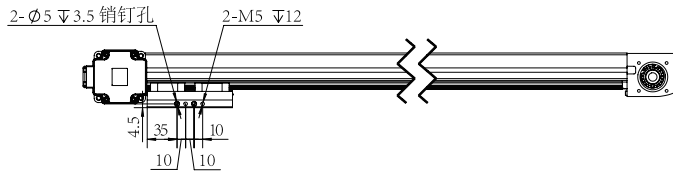
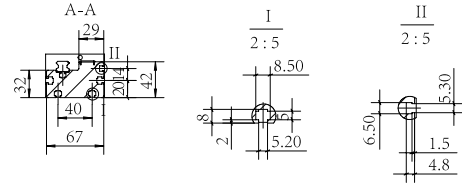
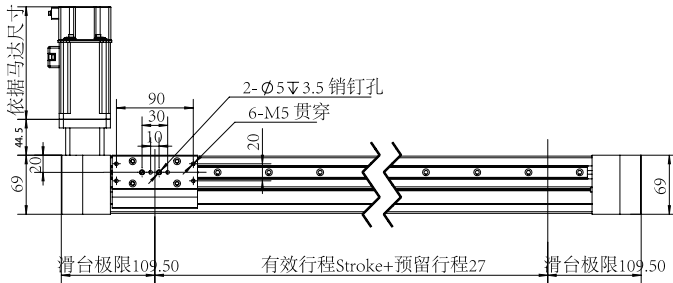
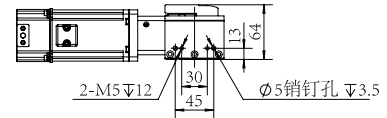
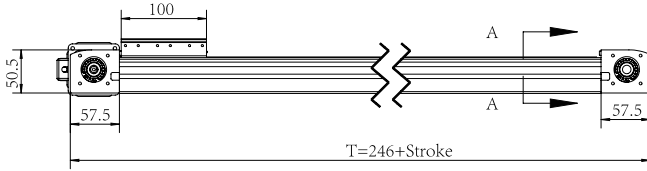


### Product parameter

Standard motor output(w)	200W			400W		
Rated torque(Nm)	0.64			1.27		
Repeatability(mm)	±0.08					
Max.Stroke(mm)	100-5000mm/50mm Pitch					
Specification	15×3(lead78mm)					
Reduction ratio	无	3:1	/	无	3:1	/
Max.speed(mm/s)	3900	1300	/	3900	1300	/
Max. horizontal load(KG)	4	12	/	8	15	/
Max. payload(KG)	EGK70	12				
	EGK70L	15				
Basic weight(KG)	EGK70:3.67			EGK70L:4.08		
Mass increase(Kg/100mm)	0.34					

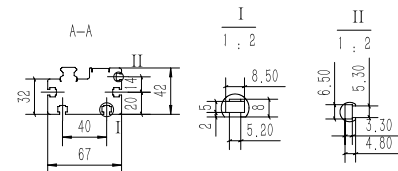
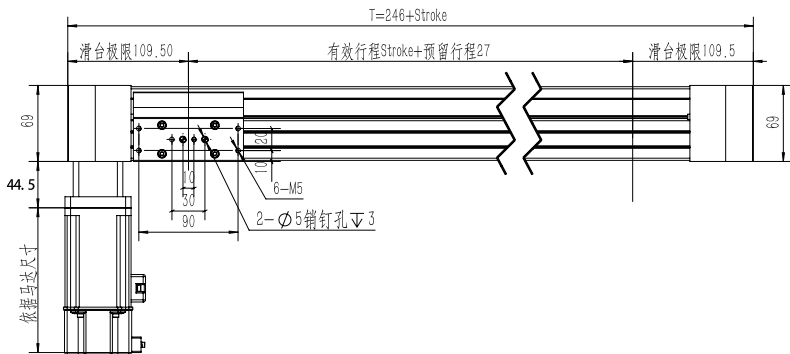
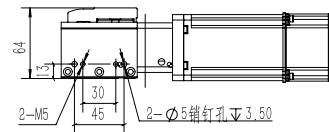
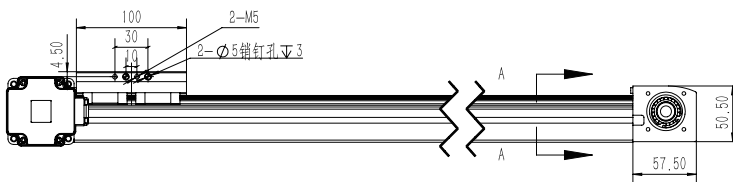
### EGK70-L-D

Unit:mm



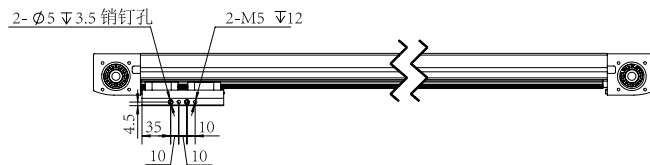
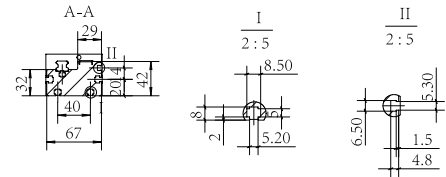
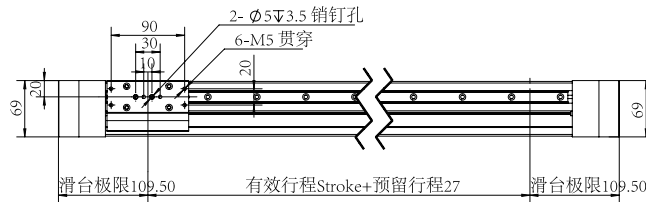
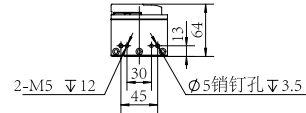
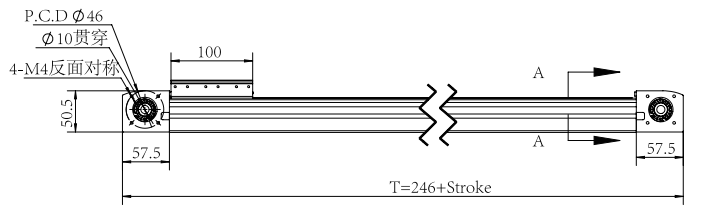
### EGK70-R-D

Unit:mm



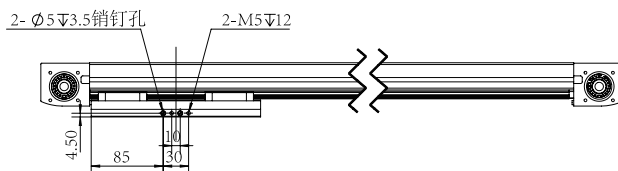
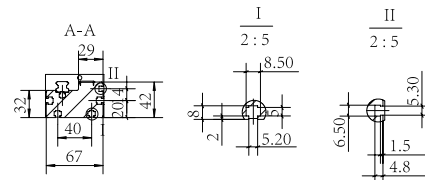
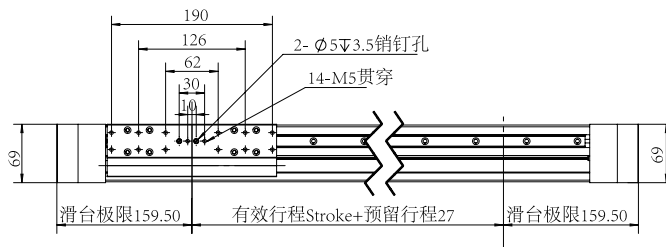
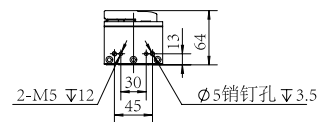
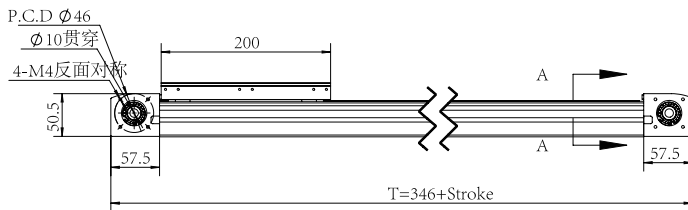
## EGK70 Bare Cylinder

Unit: mm



## EGK70L Bare Cylinder

Unit: mm



LETB series

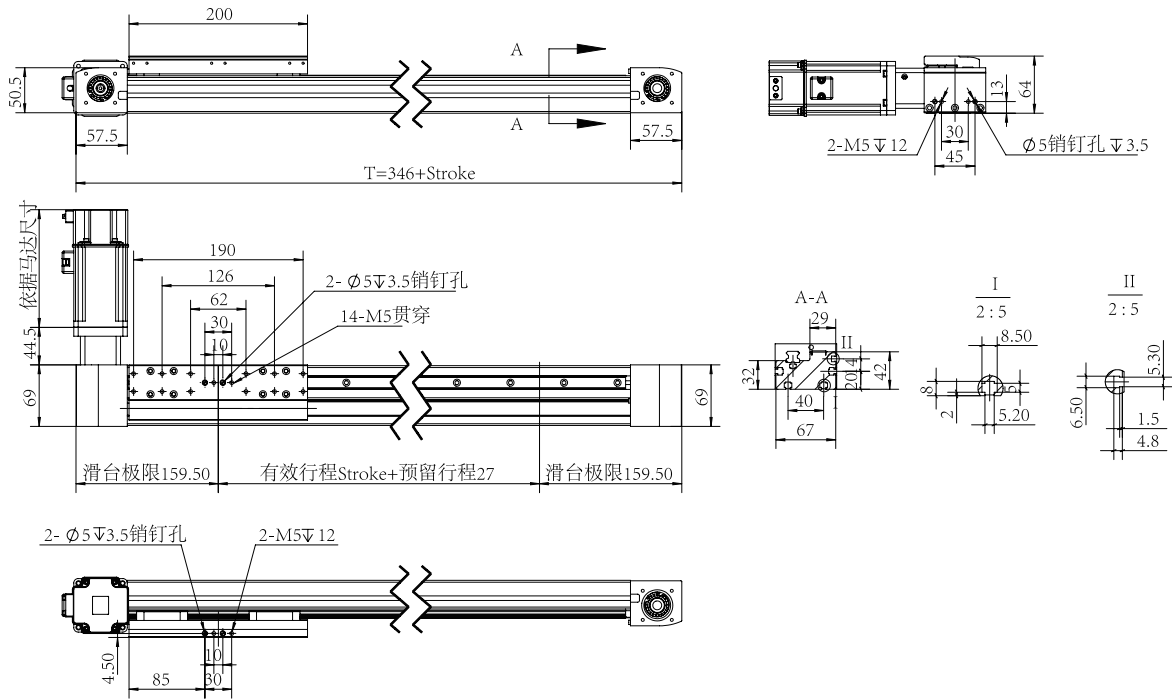
LECB series

EGK series

MK series

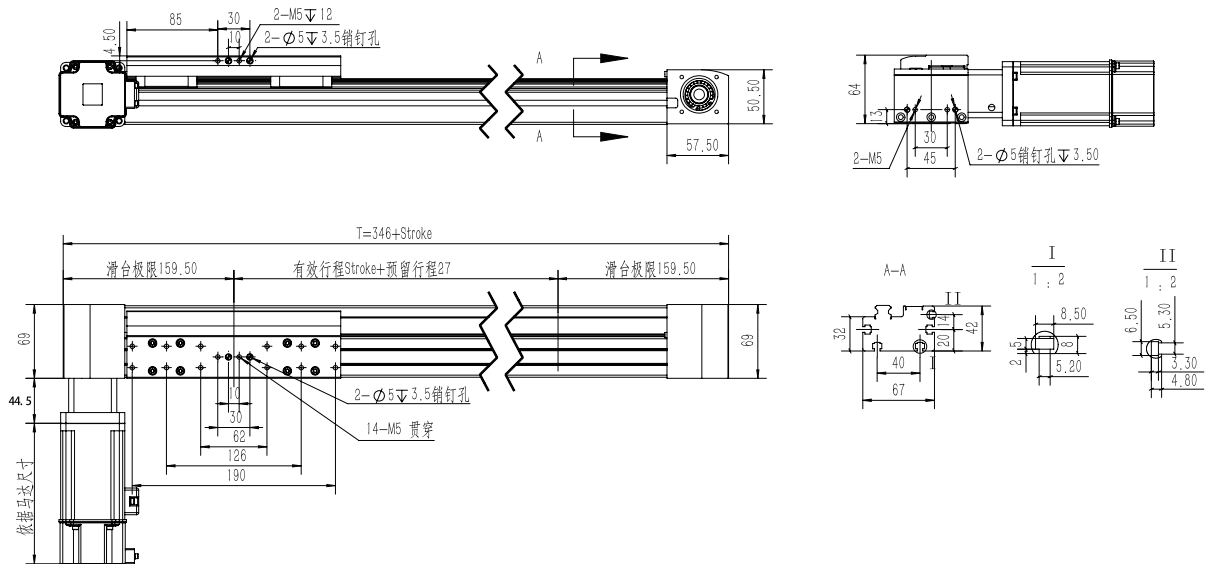
### EGK70L-L-D

Unit:mm



### EGK70L-R-D

Unit:mm



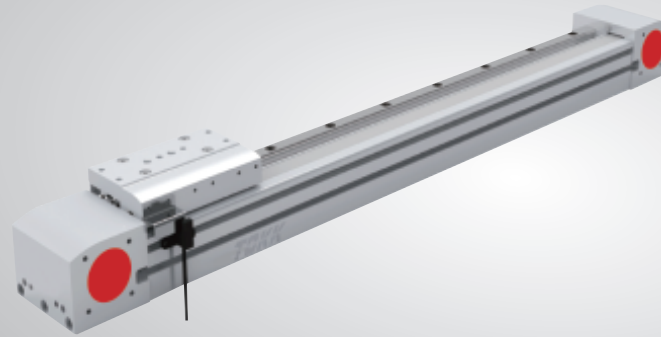
LETB series  
LECB series  
EGK series  
MK series

# EGK80

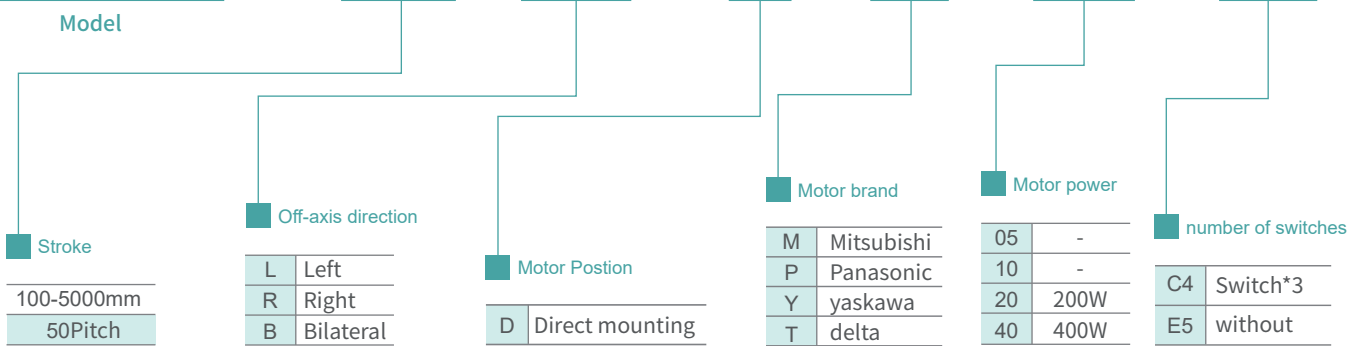
Width **84mm**

Max.Stroke **5000mm**

Max.Payload **20kg**



## EGK80 - 400 - R - D - M - 40 - C4

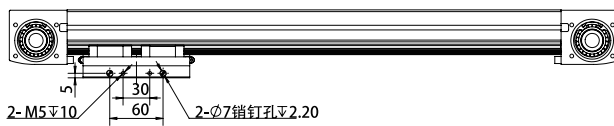
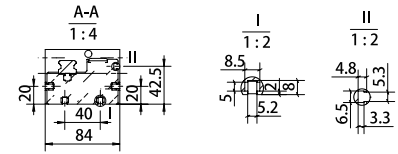
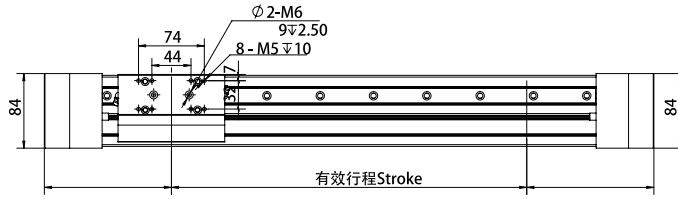
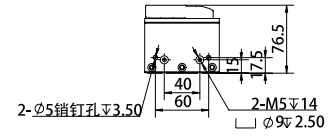
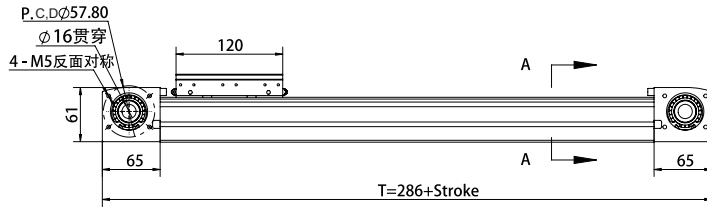


### Product parameter

Standard motor output(w)	200W			400W		
Rated torque(Nm)	0.64			1.27		
Repeatability(mm)	±0.08					
Max.Stroke(mm)	100-5000mm/50mm Pitch					
Specification	20×3(lead90mm)					
Reduction ratio	无	3:1	5:1	无	3:1	/
Max.speed(mm/s)	4500	1500	900	4500	1500	/
Max. horizontal load(KG)	4	11	15	8	20	/
Max. payload(KG)	EGK70	12				
	EGK70L	20				
Basic weight(KG)	EGK80:4.36			EGK80L:5.08		
Mass increase(Kg/100mm)	0.52					

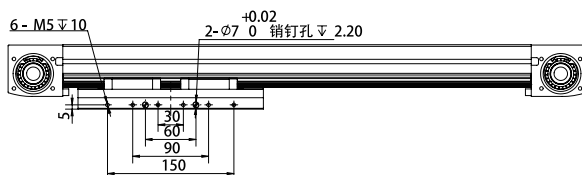
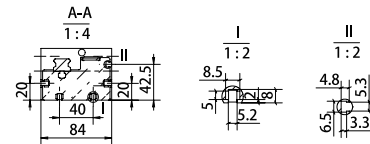
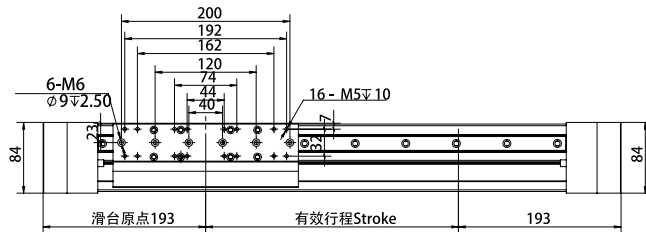
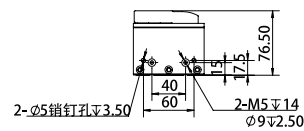
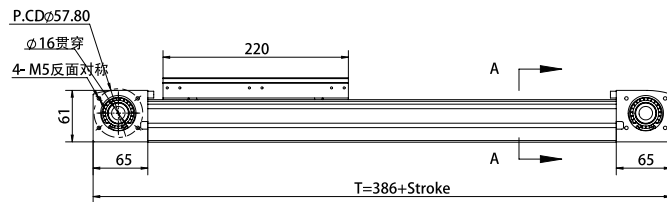
## EGK80 Bare Cylinder

Unit:mm



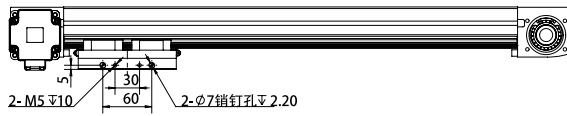
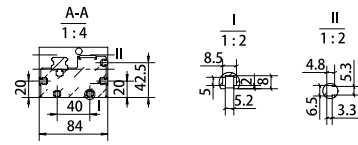
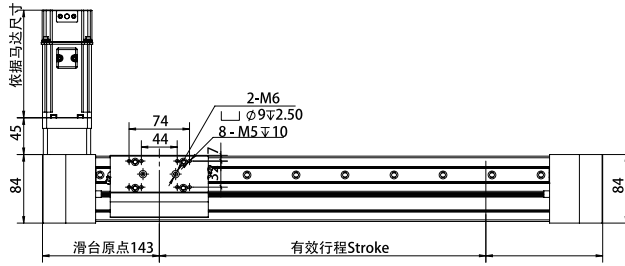
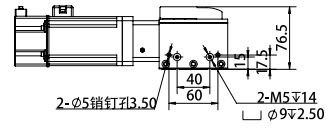
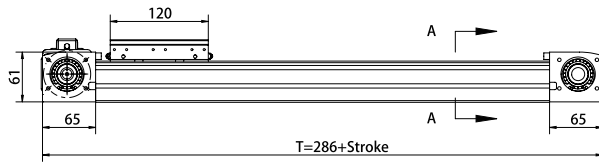
## EGK80L Bare Cylinder

Unit:mm



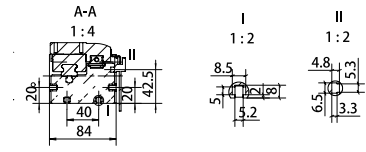
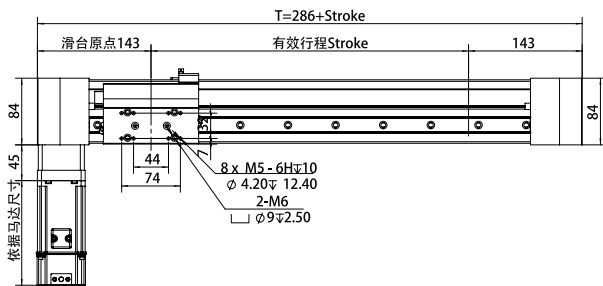
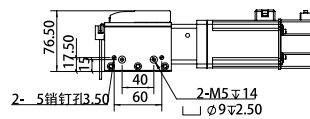
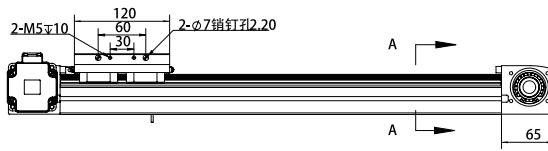
# EGK80-L-D

Unit:mm



# EGK80-R-D

Unit:mm



LETB series

LECB series

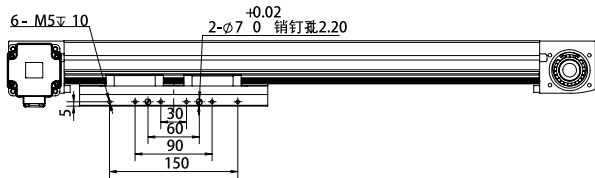
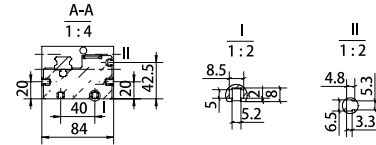
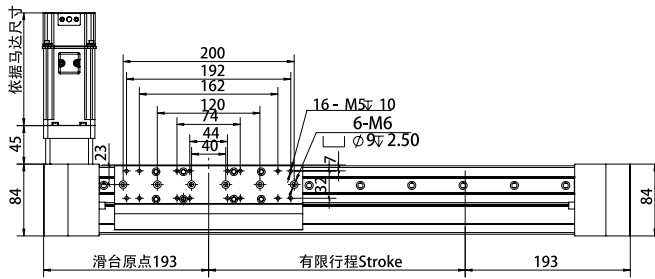
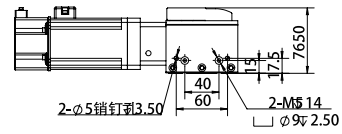
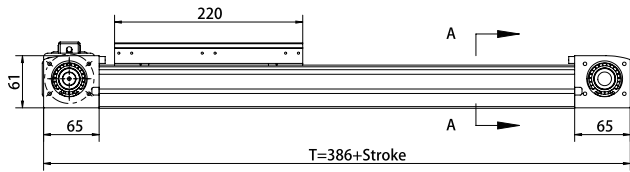
EGK series

MK series



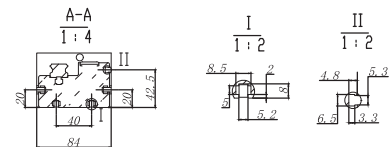
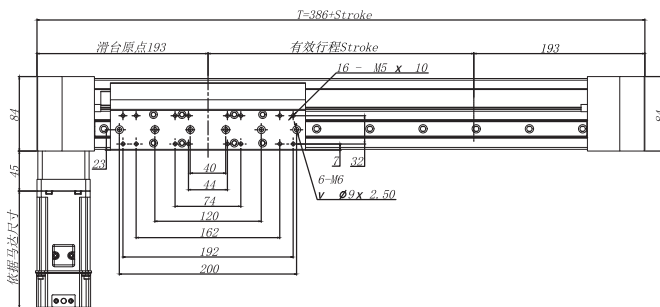
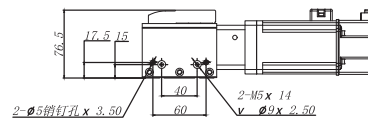
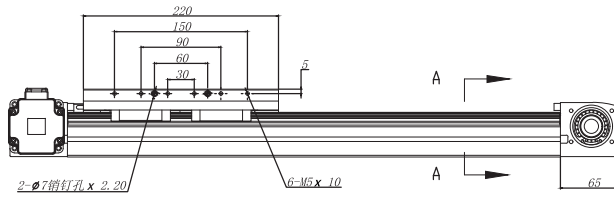
### EGK80L-L-D

Unit:mm



### EGK80L-R-D

Unit:mm



# EGK120



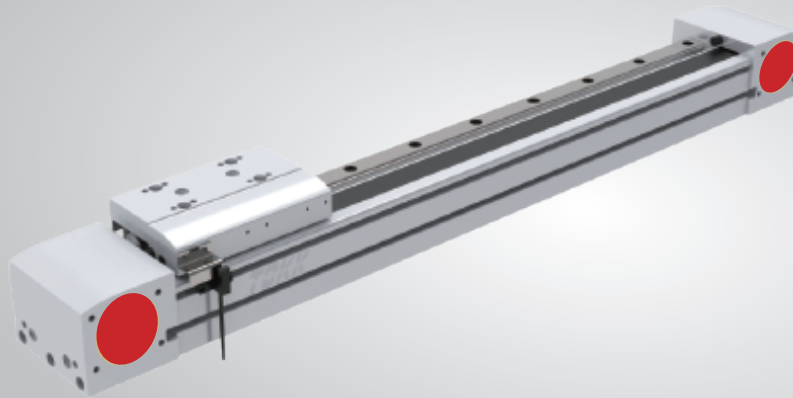
Width  
**120mm**



Max.Stroke  
**5000mm**



Max.Payload  
**70kg**



LETB series

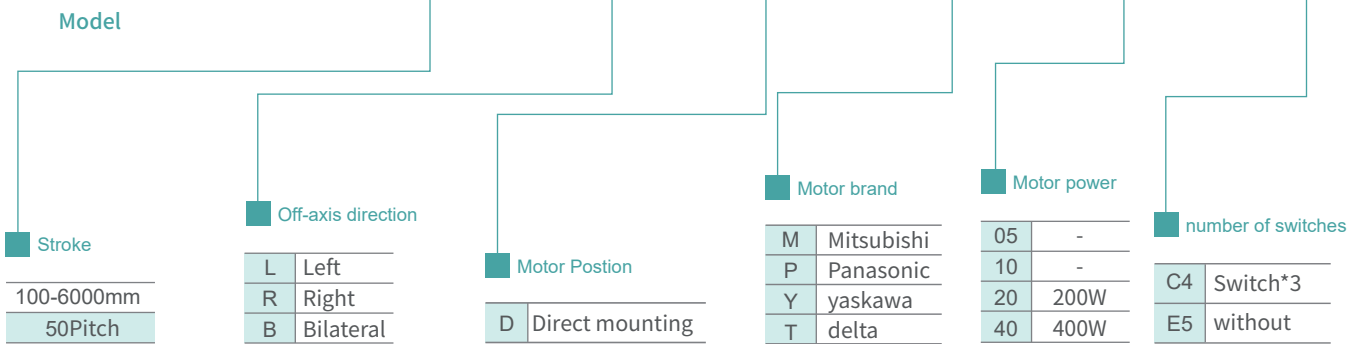
LECB series

EGK series

MK series

## EGK120 - 400 - R - D - M - 75 - C4

Model



**Stroke**

100-6000mm
50Pitch

**Off-axis direction**

L	Left
R	Right
B	Bilateral

**Motor Position**

D	Direct mounting
---	-----------------

**Motor brand**

M	Mitsubishi
P	Panasonic
Y	yaskawa
T	delta

**Motor power**

05	-
10	-
20	200W
40	400W

**number of switches**

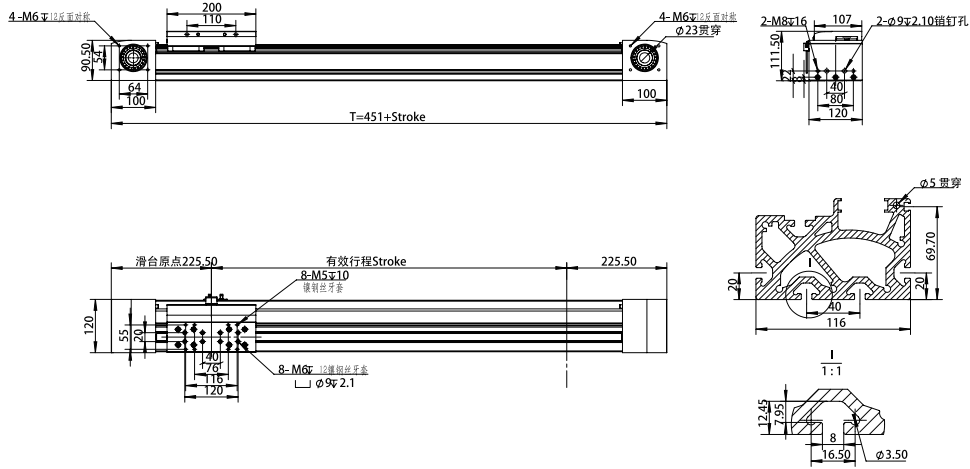
C4	Switch*3
E5	without

### Product parameter

Standard motor output(w)	750W			
Rated torque(Nm)	2.4			
Repeatability(mm)	±0.08			
Max.Stroke(mm)	100-6000mm/50mm Pitch			
Specification	45×5(lead125mm)			
Reduction ratio	3:1	5:1	7:1	10:1
Max.speed(mm/s)	2080	1250	890	625
Max. horizontal load(KG)	30	50	70	100
Basic weight(KG)	12.7			
Mass increase(Kg/100mm)	1.5			

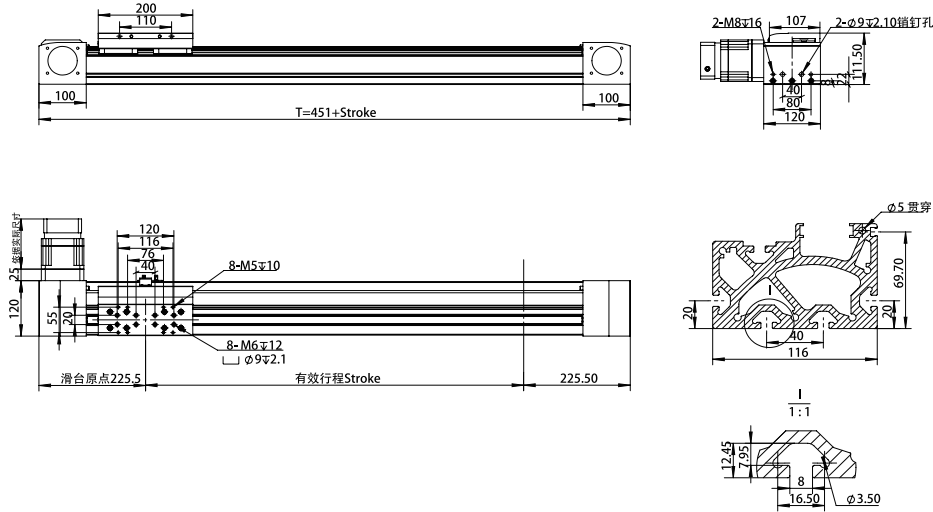
## EGK120 Bare Cylinder

Unit:mm



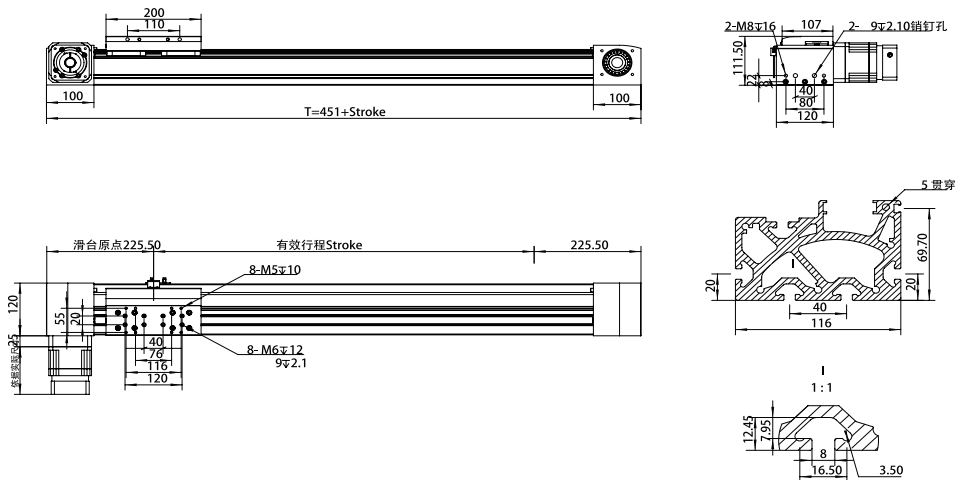
## EGK120-L-D

Unit:mm



## EGK120-R-D

Unit:mm



# EGK125



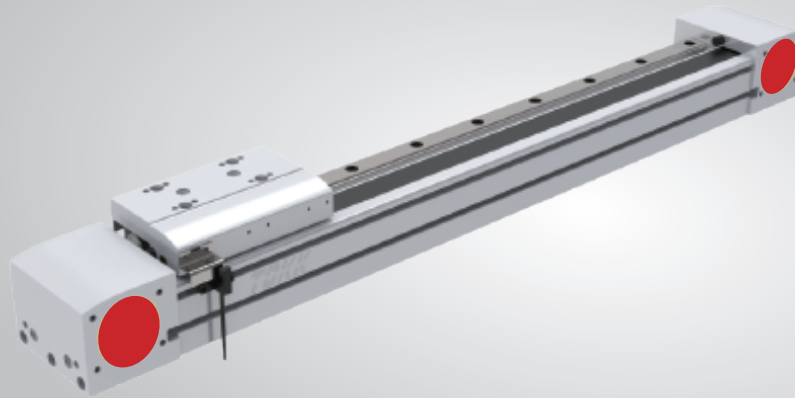
Width  
**124mm**



Max.Stroke  
**6000mm**



Max.Payload  
**40kg**



LETB series

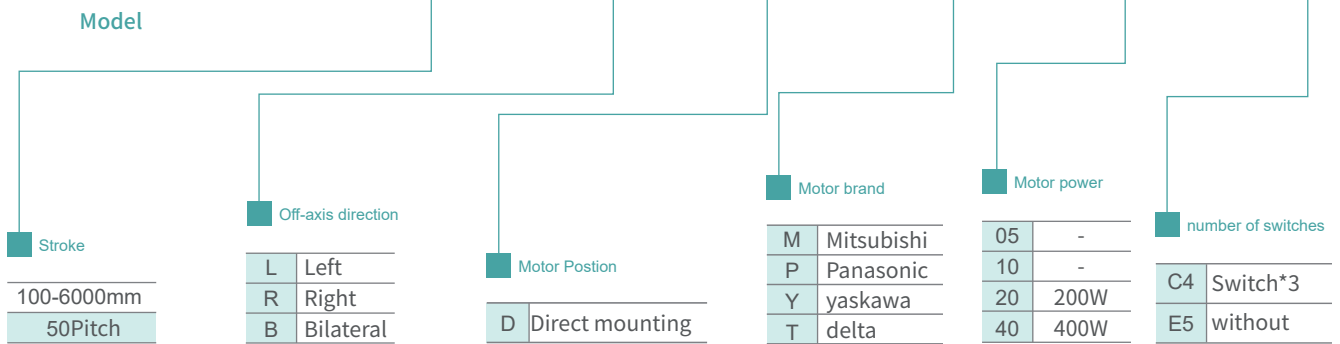
LECB series

EGK series

MK series

## EGK125 - 400 - R - D - M - 75 - C4

Model



Stroke

100-6000mm
50Pitch

Off-axis direction

L	Left
R	Right
B	Bilateral

Motor Position

D	Direct mounting
---	-----------------

Motor brand

M	Mitsubishi
P	Panasonic
Y	yaskawa
T	delta

Motor power

05	-
10	-
20	200W
40	400W

number of switches

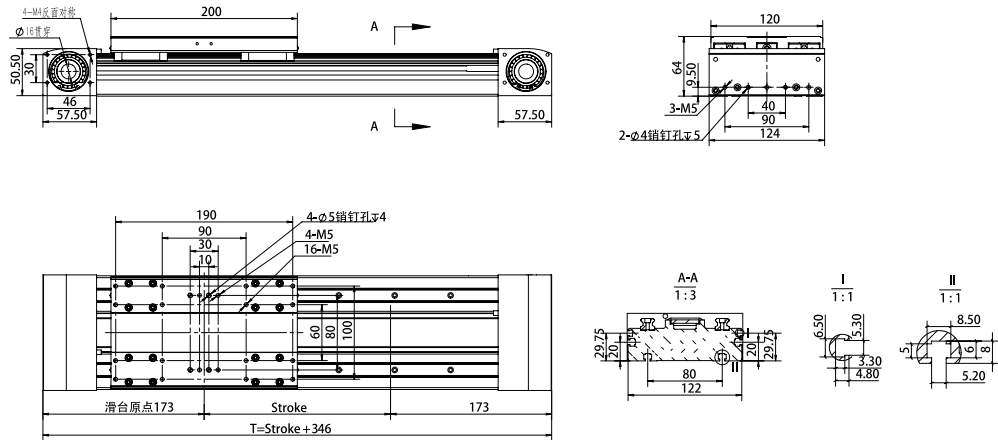
C4	Switch*3
E5	without

### Product parameter

Standard motor output(w)	400W			
Rated torque(Nm)	1.27			
Repeatability(mm)	±0.08			
Max.Stroke(mm)	100-6000mm/50mm Pitch			
Specification	30×5(lead100mm)			
Reduction ratio	3:1	5:1	7:1	/
Max.speed(mm/s)	1666	1000	714	/
Max. horizontal load(KG)	20	34	40	/
Max. payload(KG)	40			
Basic weight(KG)	7.6			
Mass increase(Kg/100mm)	0.8			

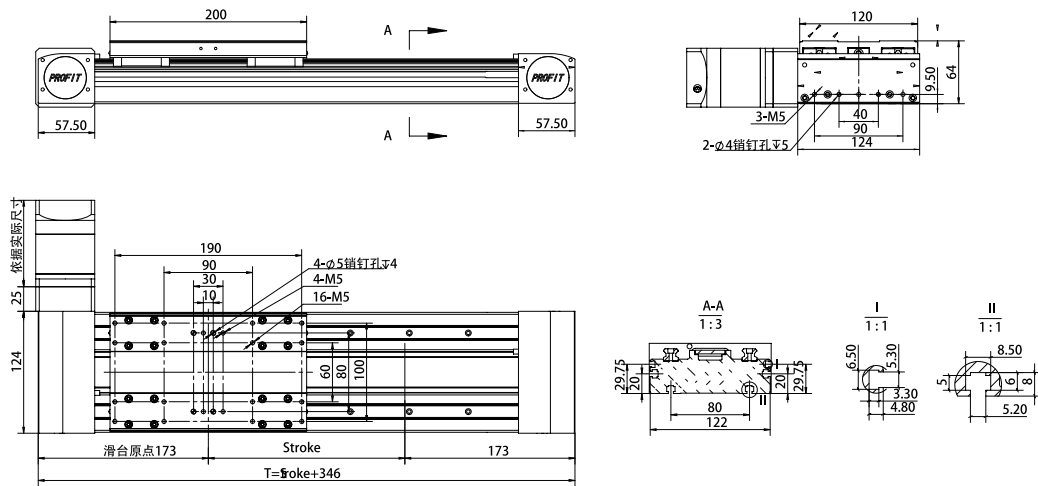
## EGK125 Bare Cylinder

Unit:mm



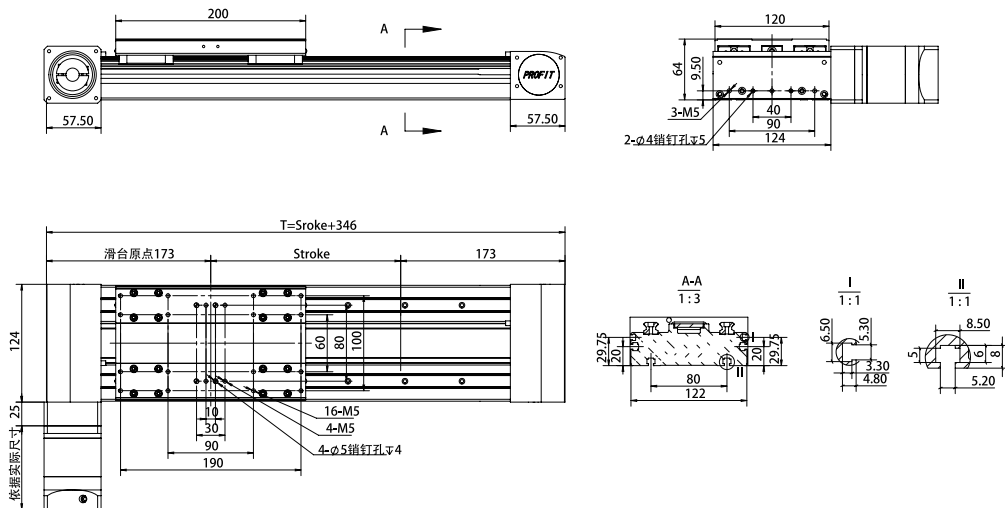
## EGK125-L-D

Unit:mm



## EGK125-R-D

Unit:mm



# EGK160



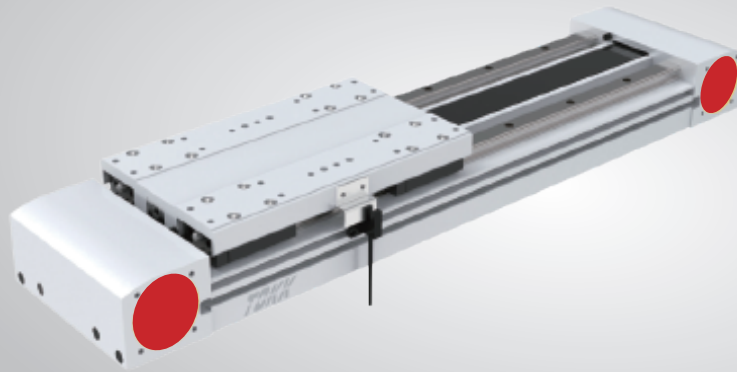
Width  
**162mm**



Max.Stroke  
**6000mm**



Max.Payload  
**100kg**



LETB series

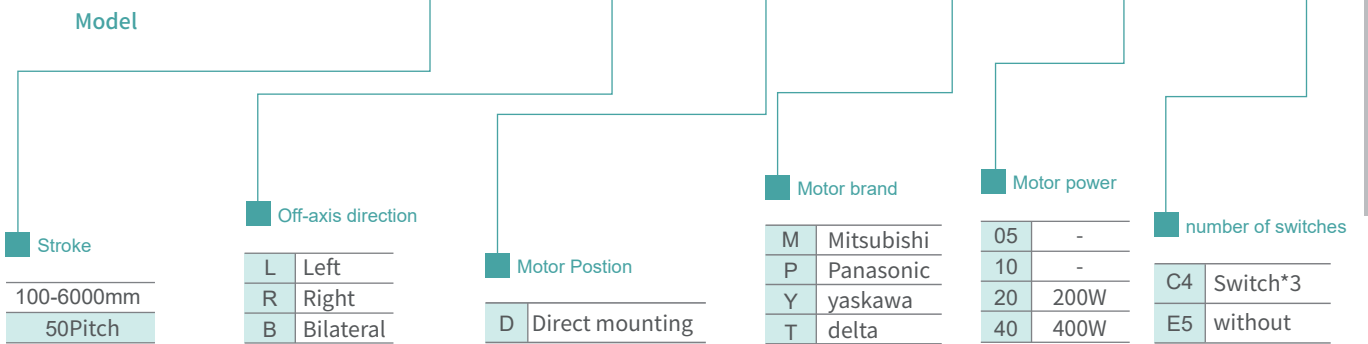
LECB series

EGK series

MK series

## EGK160 - 400 - R - D - M - 75 - C4

Model



**Stroke**

100-6000mm
50Pitch

**Off-axis direction**

L	Left
R	Right
B	Bilateral

**Motor Position**

D	Direct mounting
---	-----------------

**Motor brand**

M	Mitsubishi
P	Panasonic
Y	yaskawa
T	delta

**Motor power**

05	-
10	-
20	200W
40	400W

**number of switches**

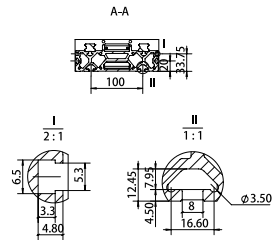
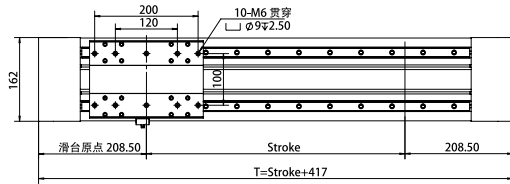
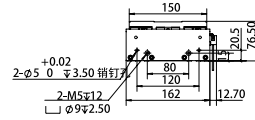
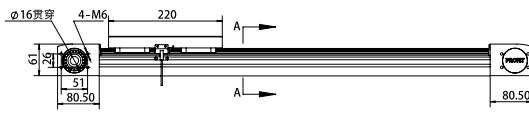
C4	Switch*3
E5	without

### Product parameter

Standard motor output(w)	750W			
Rated torque(Nm)	2.4			
Repeatability(mm)	±0.08			
Max.Stroke(mm)	100-6000mm/50mm Pitch			
Specification	45×5(lead125mm)			
Reduction ratio	3:1	5:1	7:1	10:1
Max.speed(mm/s)	2080	1250	890	625
Max. horizontal load(KG)	30	50	70	100
Max. payload(KG)	100			
Basic weight(KG)	10.2			
Mass increase(Kg/100mm)	1.2			

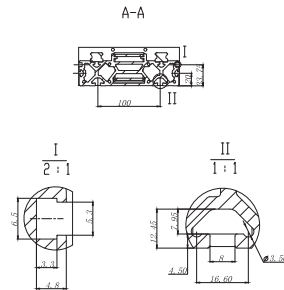
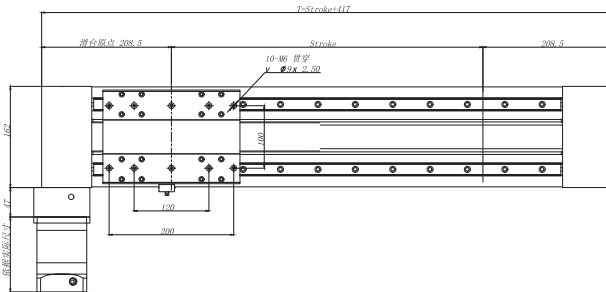
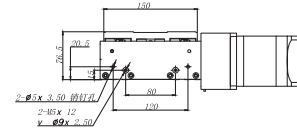
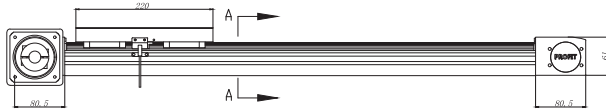
# EGK160 Bare Cylinder

Unit:mm



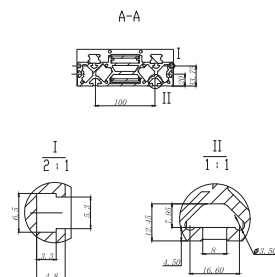
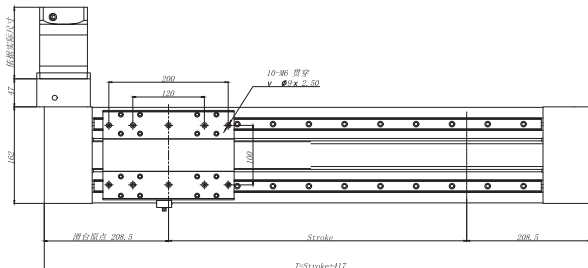
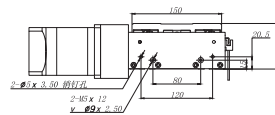
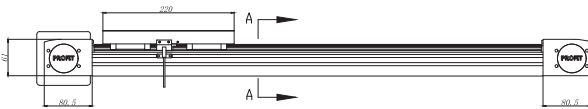
# EGK160-R-D

Unit:mm



# EGK160-L-D

Unit:mm



# EGK220



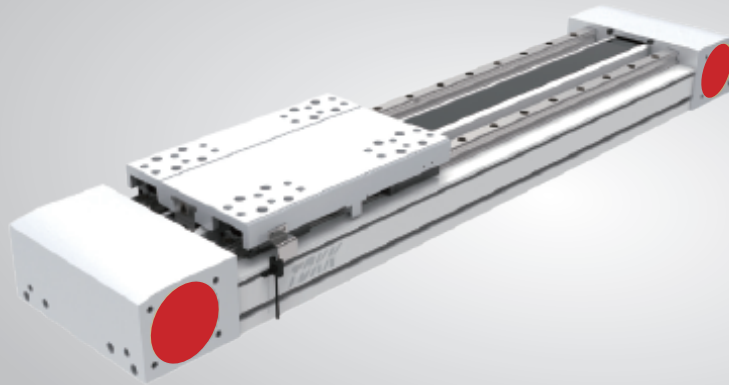
Width  
**224mm**



Max.Stroke  
**6000mm**



Max.Payload  
**200kg**



LETB series

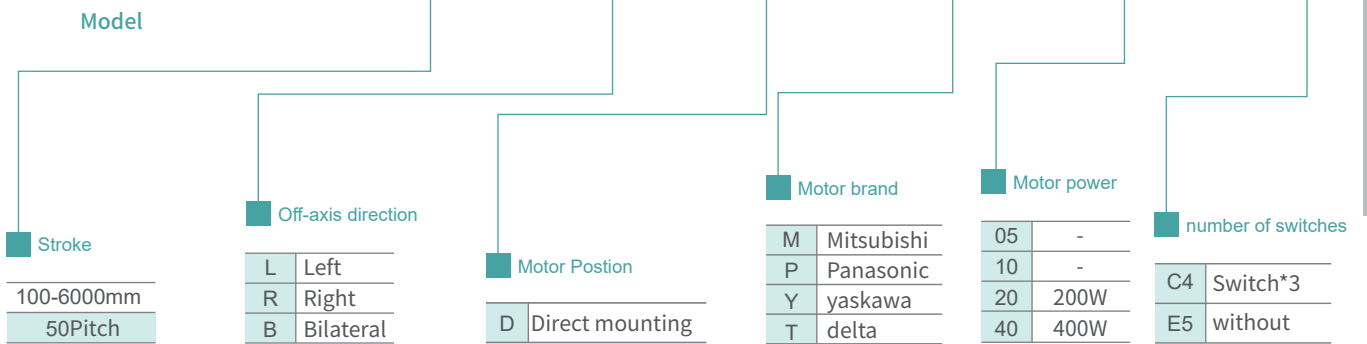
LECB series

EGK series

MK series

## EGK220 - 400 - R - D - M - 20 - C4

Model



Stroke

100-6000mm
50Pitch

Off-axis direction

L	Left
R	Right
B	Bilateral

Motor Position

D	Direct mounting
---	-----------------

Motor brand

M	Mitsubishi
P	Panasonic
Y	yaskawa
T	delta

Motor power

05	-
10	-
20	200W
40	400W

number of switches

C4	Switch*3
E5	without

### Product parameter

Standard motor output(w)	1500W			
Rated torque(Nm)	7.16			
Repeatability(mm)	±0.08			
Max.Stroke(mm)	100-6000mm/50mm Pitch			
Specification	45×8(lead208mm)			
Reduction ratio	3:1	5:1	7:1	10:1
Max.speed(mm/s)	2300	1380	990	690
Max. horizontal load(KG)	55	90	130	180
Max. payload(KG)	200			
Basic weight(KG)	25.8			
Mass increase(Kg/100mm)	2.1			



### EGK220 Bare Cylinder

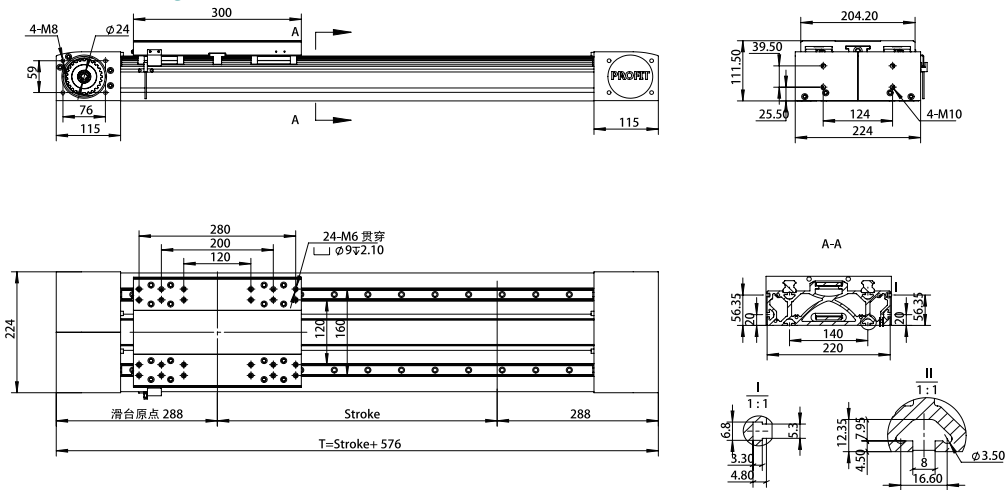
Unit:mm

LETB series

LECB series

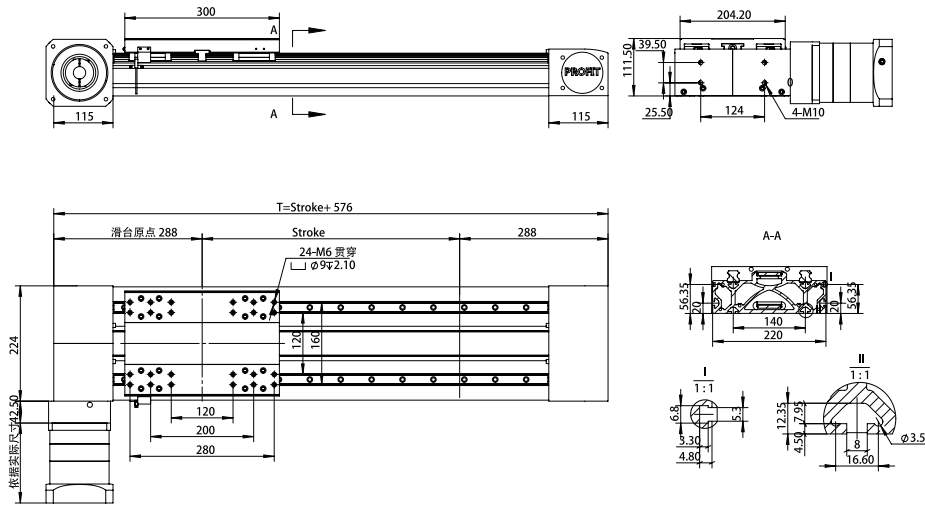
EGK series

MK series



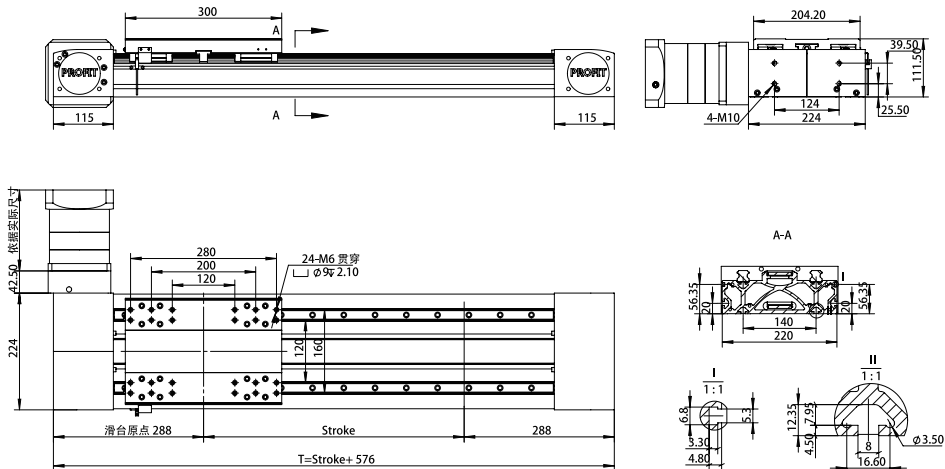
### EGK220-R-D

Unit:mm

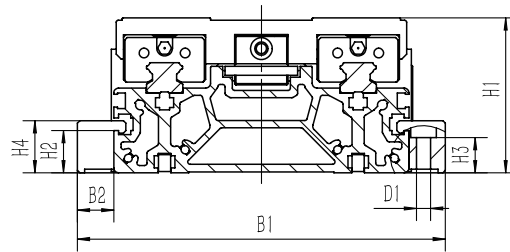
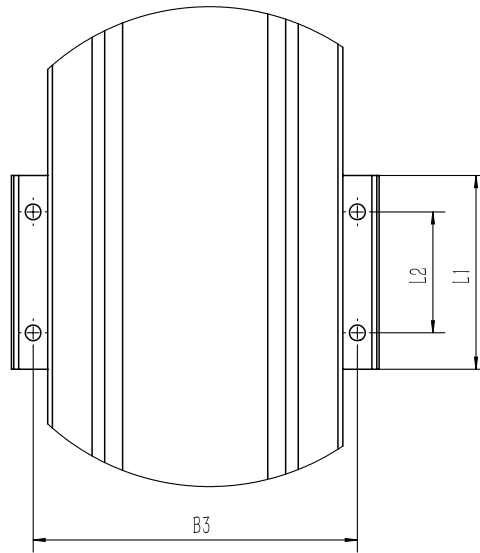


### EGK220-L-D

Unit:mm



# 固定压块



型号	用途	B1	B2	B3	$\phi D1$	H1	H2	H3	H4	L1	L2
YKEGK70	EGK70	97	15	79	6.5	64	17.4	14.5	21.5	80	50
	EGK80	110	15	92	6.5	76.5	17.4	14.5	21.5	80	50
	EGK125	152	15	134	6.5	64	17.4	14.5	21.5	80	50
	EGK160	190	15	172	6.5	76.5	17.4	14.5	21.5	80	50
YKEGK220	EGK120	262	21	238	8.5	111.5	15.9	13.5	21.9	100	70
	EGK220	262	21	238	8.5	111.5	15.9	13.5	21.9	100	70

LETB series

LECB series

EGK series

MK series