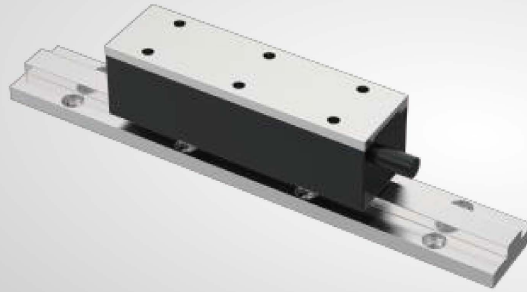


TICA35 series with iron core

34.3mm
Height

35mm
width



Continuous thrust **48N~144N**

Peak thrust **138N~414N**

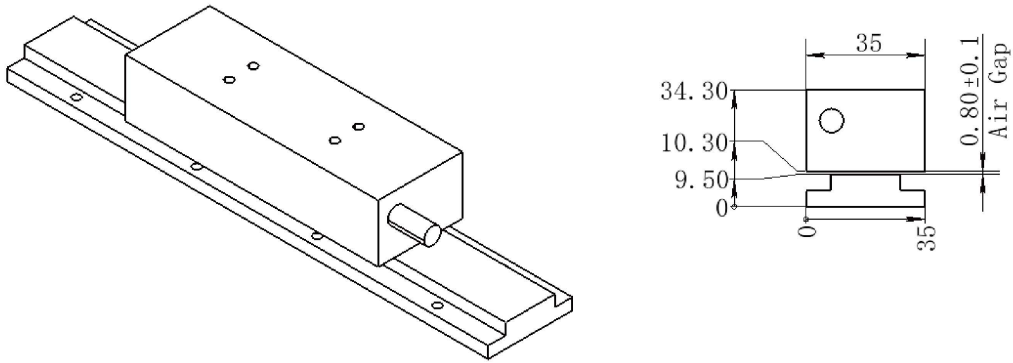
Temperature rise **< 0.05°C/W**

Thrust fluctuation **< 2%**

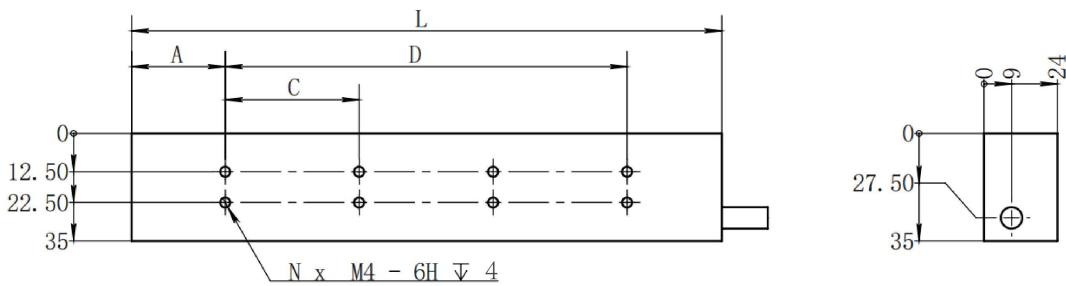
Product parameter

Motor Model	TICA35-1	TICA35-2	TICA35-3
Winding Code	S	S	S
Performance Parameters			
Maximum Thrust (N)	138	276	414
Continuous Thrust (N)	48	96	144
Maximum Power (W)	208	416	624
Continuous Power (W)	72	144	216
Forward Attraction Force (N)	312	624	936
Electrical Characteristics			
Maximum Current (Arms)	10.34	10.34	10.34
Continuous Current (Arms)	3.39	3.39	3.39
Thrust Constant (N/Arms)	61.36	28.32	42.48
Back EMF (Vpeak/m/s)	13.4	40.63	40.63
Line Resistance (Ohms)	1.91	3.47	5.03
Line Inductance (mH)	7.3	14.6	21.9
Time Constant (ms)	3.82	4.21	4.35
Motor Constant (N/√W)	29.6	12.41	15.46
Maximum Coil Temperature (°C)	100	100	100
Maximum Terminal Voltage (VDC)	310	310	310
Mechanical Characteristics			
Mover Length (mm)	105	193	280
Mover Mass (kg)	0.54	1.08	1.62
Stator Mass (kg/m)	2	2	2
Magnetic Pole Pitch (mm)	25	25	25

Motor outline

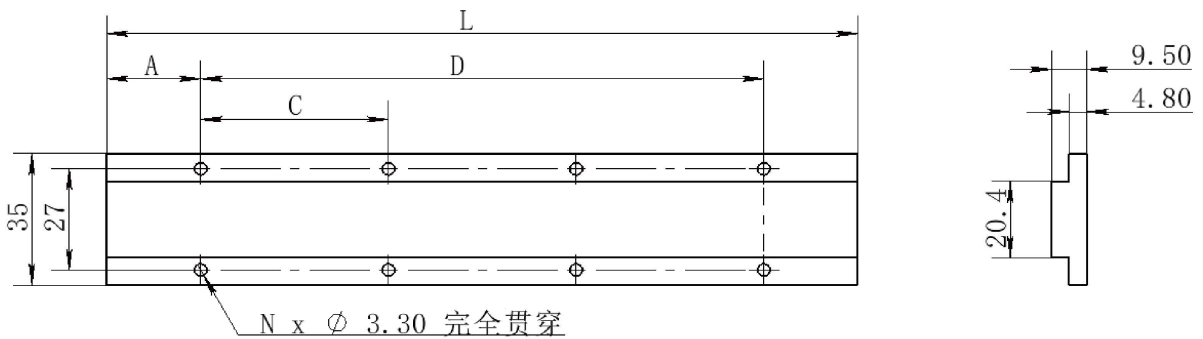


Coil profile



(单位:mm)	A	C	D	L	N
TICA35-1	30.6	43.8	43.8	105	4
TICA35-2	30.8	43.8	131.4	193	8
TICA35-3	30.5	43.8	291	280	12

Track profile



(单位:mm)	A	C	D	L	N
TMA35-150	25	50	100	150	6
TMA35-200	25	50	150	200	8
TMA35-250	25	50	200	250	10